

Water Efficiently

Typically, at least 50 percent of water used by households is used outdoors. Creating a yard that thrives on rainfall only is the best way to reduce maintenance, save on water bills, conserve our water resources and have a healthy landscape.

If you are planning to install a new irrigation system or modify 50% of your system by area, the system must adhere to the design standards of the Alachua County Irrigation Efficiency Code. Homeowners planning on doing the work themselves should call 352-264-6800 to consult with County staff.

Resources:

- **Florida Friendly Landscaping Program™**
<http://fyn.ifas.ufl.edu>
- **UF/IFAS Extension**
Alachua County Office
mag@alachuacounty.us
alachua@ifas.ufl.edu
- **Alachua County Environmental Protection Department**
www.AlachuaCountyWater.org
- **Florida Water Star and Water Wise Plant Database**
floridawaterstar.com
- **Florida Native Plant Society**
www.FNPS.org

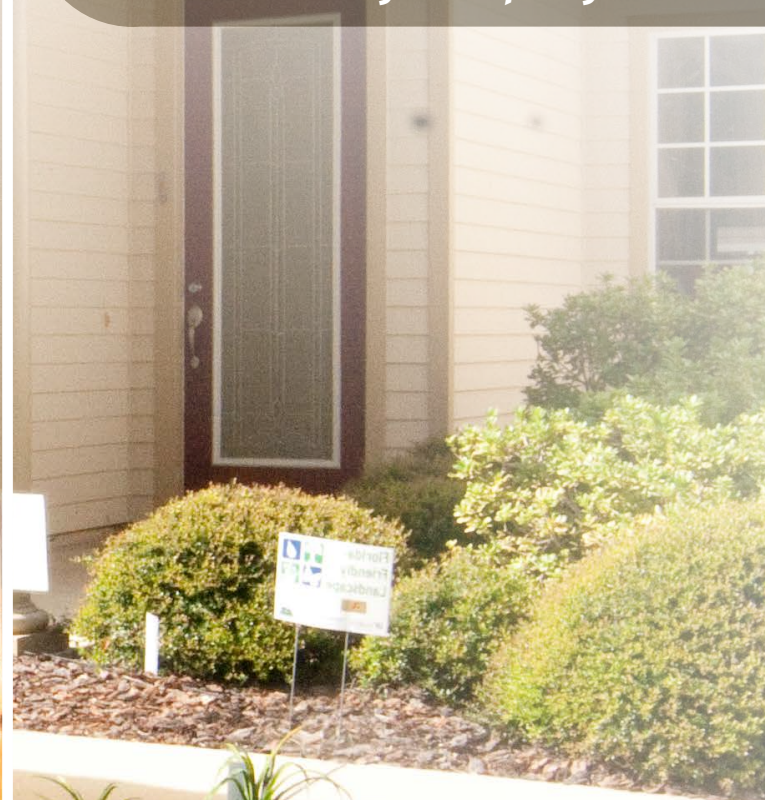
UF IFAS Extension
UNIVERSITY of FLORIDA



Florida-Friendly
Landscaping™ PROGRAM

UF/IFAS Extension Landscaping for Water Conservation

A Homeowner's Guide to Low Maintenance Landscaping for Saving Our Springs



UF IFAS Extension
UNIVERSITY of FLORIDA



Florida-Friendly
Landscaping™ PROGRAM

Saving water is important in Alachua County because we are surrounded by so many springs. The water that comes out of our faucets and sprinklers is from the aquifer beneath us and is the same water that replenishes our springs and rivers. If we over pump the aquifer, alternative water

sources will be much more expensive (up to ten fold) and energy intensive. By making every drop count and reducing our demands on the aquifer, together we can help protect the springs and future water supplies.

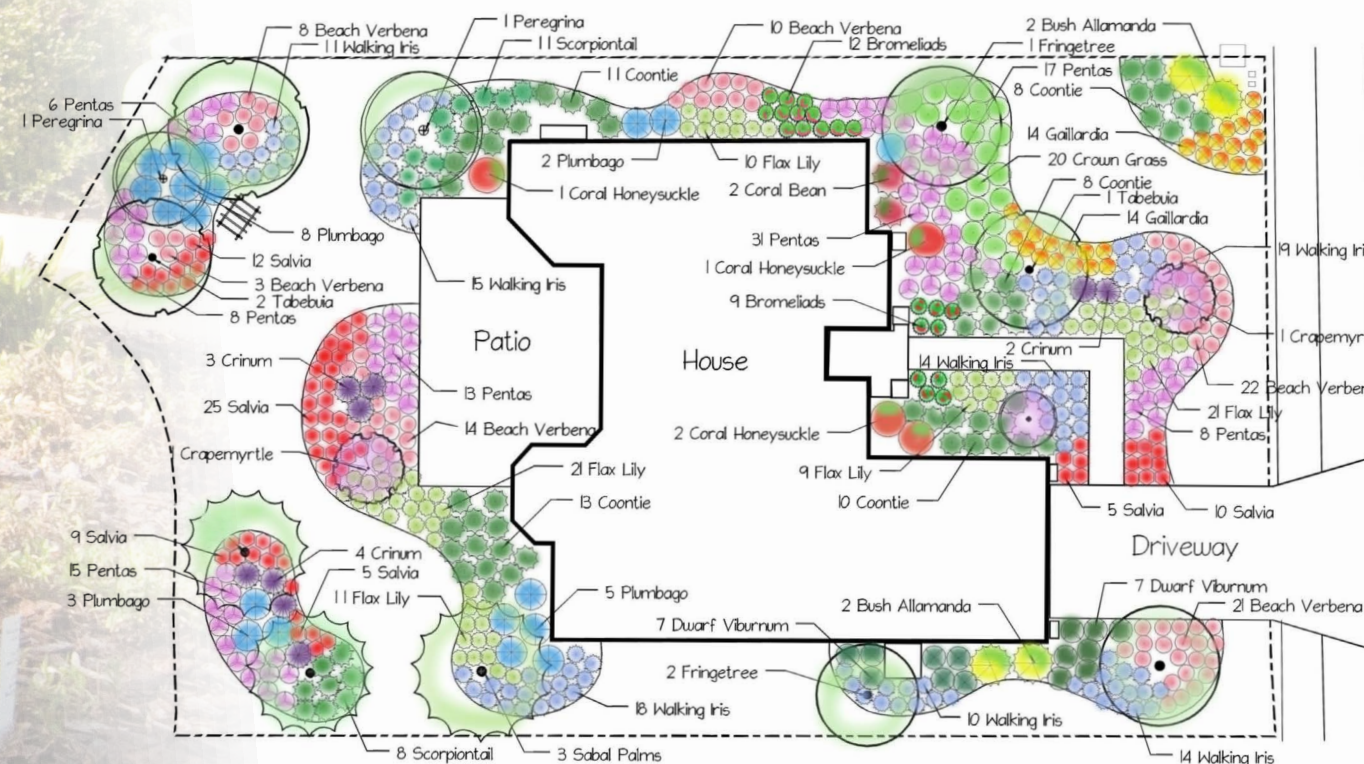
Saving Water, Saving Springs, Saving \$\$\$\$

- Use the right plant for the right place.
- Group plants and irrigation zones according to moisture needs.
- Use microirrigation for landscaped beds.
- Minimize turf and high volume irrigation.
- Cap irrigation heads that water established trees and shrubs

The Role of Landscaping

Putting plants in the right place is the key to ensuring they survive and remain healthy in your landscape. You can reduce the need for water, fertilizer, pesticides and pruning if you plant Florida-friendly plants and follow these tips.

- To conserve water, choose a drought tolerant grass and use drought tolerant plants.
- Understand the soil, sunlight and water conditions of the area you are planting. Choose plants that match and thrive under the conditions noted in your yard.
- Plant a variety of Florida-friendly plants, including flowering and fruiting plants that attract butterflies, birds, beneficial insects and other wildlife. Many Florida native plants are especially good at attracting wildlife.



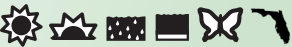
Low Maintenance Plants for Landscaping in Alachua County

Trees & Palms



Cabbage palm
Sabal palmetto

40' ht. x 20' w.



Needle palm
Rhapidophyllum hystrix

6–8' ht. x 5–10' w.



Live oak
Quercus virginiana

40–80' ht. x 60–120' w.



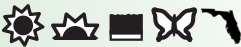
Winged elm
Ulmus alata

45–70' ht. x 30–40' w.



Sparkleberry
Vaccinium arboreum

12–18' ht. x 10–15' w.



Large Shrubs



Ocala anise
Illicium parviflorum

10–15' ht. x 6' w.



Saw palmetto
Serenoa repens

6–10' ht. x 6–10' w.



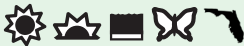
Walters viburnum
Viburnum obovatum

8–25' ht. x 6–10' w.



Wax myrtle
Myrica cerifera

10–40' ht. x 20–25' w.



Yaupon holly
Ilex vomitoria

15–30' ht. x 6–20' w.



Small Shrubs



Beauty berry
Callicarpa americana

4–6' ht. x 4–6' w.



Coontie
Zamia floridana

2–4' ht. x 3–4' w.



Firebush
Hamelia patens

5–15' ht. x 6' w.



Coral bean
Erythrina herbacea

5–10' ht. x 8–12' w.



Yucca filamentosa
Yucca filamentosa

3–4' ht. x 3–6' w.



Flowers



Beach sunflower
Helianthus debilis

1' ht. x 3–4' w.



Blanket flower
Gaillardia pulchella

1' ht. x 2–3' w.



Tropical sage
Salvia coccinea

1–2' ht. x 2' w.



Coreopsis
Coreopsis spp.

1–4' ht. x 1–3' w.



Black-eyed susan
Rudbeckia hirta

2–3' ht. x 1–2' w.



Groundcovers



Perennial peanut
Arachis glabrata

6–8" ht. x 24" w.



Sunshine mimosa
Mimosa strigillosa

6–9" ht. x 10' w.



Border grass
Leriospermum muscari

1–2' ht. x 1–2' w.



Asiatic jasmine
Trachelospermum asiaticum

1–3' ht. x 1–3' w.



Frog fruit
Phyla nodiflora

1/2–1' ht. x 2' w.



Grasses



Cordgrass
Spartina bakeri

2–5' ht. x 2–6' w.



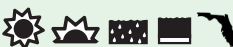
Elliot's lovegrass
Eragrostis elliotti

1–2' ht. x 1–2' w.



Dwarf fakahatchee
Tripsacum floridanum

4–6' ht. x 4–6' w.



Muhly grass
Muhlenbergia capillaris

1/2–1' ht. x 2' w.



Zebra Grass
Miscanthus sinensis

4–5' ht. x 3–4' w.



Sun Light



Moisture



Attracts Wildlife



Native

