

BE PREPARED BEFORE THE STORM

Have a Basic Disaster Kit with:

- 3 days of water (1 gal/day/person)
- Food (3 day supply)
- Battery or crank powered radio
- Extra Batteries
- NOAA weather radio with true alert
- Flashlight
- First Aid Kit
- Whistle to signal for help
- Dust mask to filter contaminated air
- Plastic sheeting and duct tape to shelter
- Wrench or pliers to turn off utilities
- Moist towelettes, garbage bags and plastic ties for sanitation
- Manual can opener for food
- Local maps
- Cell phone with chargers, diverter or solar charger
- Prescription medication and glasses
- Instant formula and diapers
- Pet food and water for pets
- Cash or traveler's checks
- Important documents in waterproof portable container
- Sleeping bag or blanket for each person
- Complete change of clothing
- Household chlorine bleach and medicine dropper
- Fire extinguisher
- Matches in waterproof container
- Feminine supplies and personal hygiene items
- Mess kits, paper cups, plates, towels and utensils
- Paper and pencil
- Books, games, puzzles or other activities for children

PLAN AHEAD!

HELPFUL NUMBERS

Animal Resources & Care	(352) 955-2333
Appliance & Furniture Collection	(352) 338-3233
Bus (RTS)	(352) 334-2600
Codes Enforcement	(352) 374-5244
County Parks	(352) 374-5245
Crisis Center	(352) 264-6789
Emergencies	911
Garbage & Recycling Collection	(352) 338-3233
Household Hazardous Waste	(352) 334-0440
Minimum Housing	(352) 374-5244
Poison Control	(800) 222-1222
Public Health Department	(352) 334-7900
Road and bridge	(352) 374-5245
Rumor Control	(352) 264-6557
Transfer Station	(352) 334-0172

HAVE A PLAN AND BE PREPARED!

Visit AlachuaCountyRecycles.com
for the most up to date
information after disaster.



**Solid Waste
& Resource Recovery**

DISASTER 101

PREPAREDNESS AND RECOVERY



DEBRIS SEPARATION
Separate debris into the five categories shown below.



SEPARATING YOUR DEBRIS

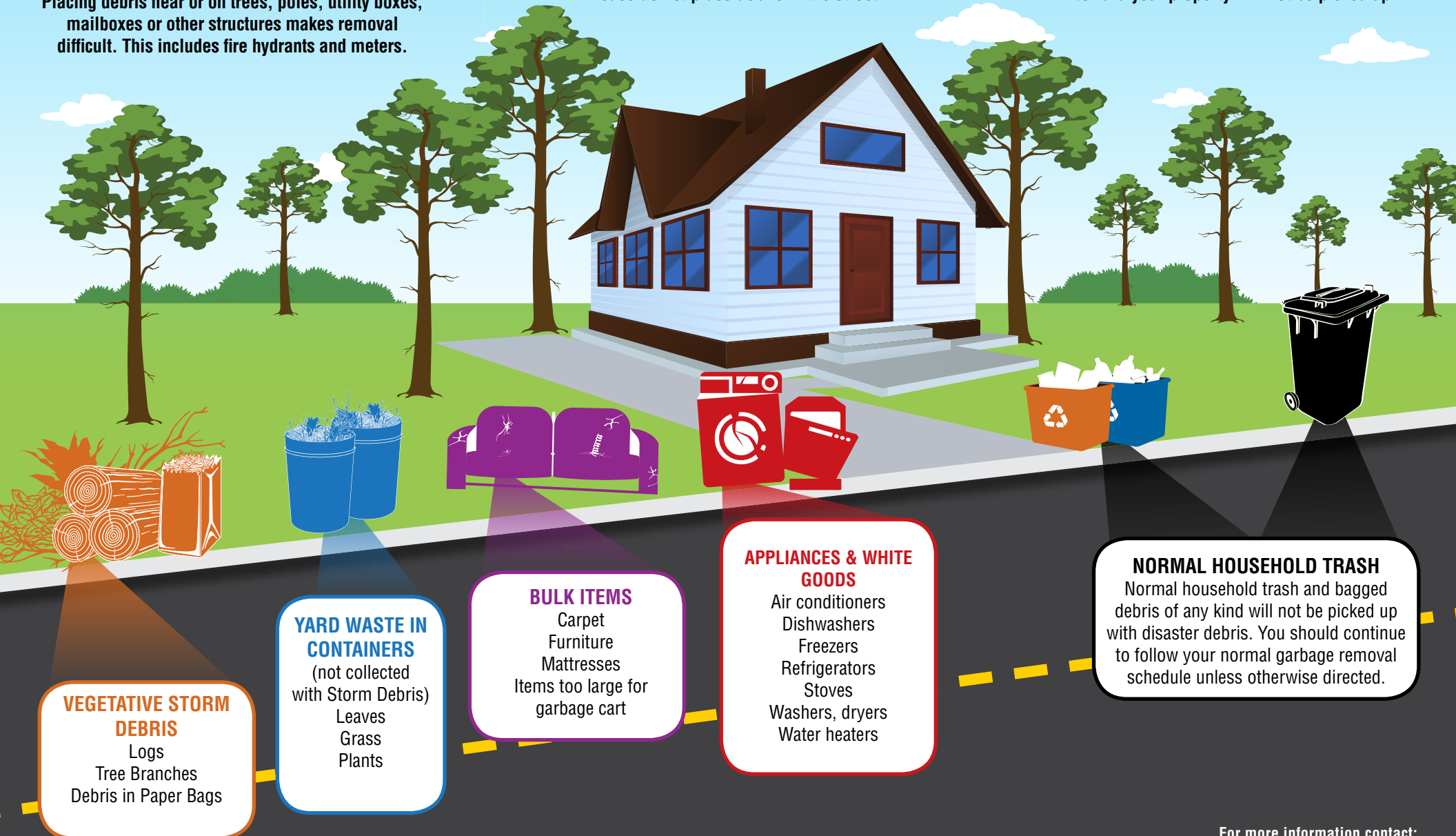
Debris should be placed curbside, without blocking the roadway, storm drains, or any utilities.

DANGER **DO NOT STACK OR LEAN**

Placing debris near or on trees, poles, utility boxes, mailboxes or other structures makes removal difficult. This includes fire hydrants and meters.

UNSURE WHERE TO PLACE DEBRIS?
All debris must be placed in the right of way.
Please do not place debris in the street.

NO PICKUP ZONE
Any debris placed from the sidewalk or right of way toward your property will not be picked up.



VEGETATIVE STORM DEBRIS

Logs
Tree Branches
Debris in Paper Bags

YARD WASTE IN CONTAINERS

(not collected with Storm Debris)
Leaves
Grass
Plants

BULK ITEMS

Carpet
Furniture
Mattresses
Items too large for garbage cart

APPLIANCES & WHITE GOODS

Air conditioners
Dishwashers
Freezers
Refrigerators
Stoves
Washers, dryers
Water heaters

NORMAL HOUSEHOLD TRASH

Normal household trash and bagged debris of any kind will not be picked up with disaster debris. You should continue to follow your normal garbage removal schedule unless otherwise directed.