



# Alachua County

## Alachua County Forever Barr Hammock – Ledwith Prairie



View of Ledwith Prairie. Photo credit: Sandy Vardaman, Alachua County EPD

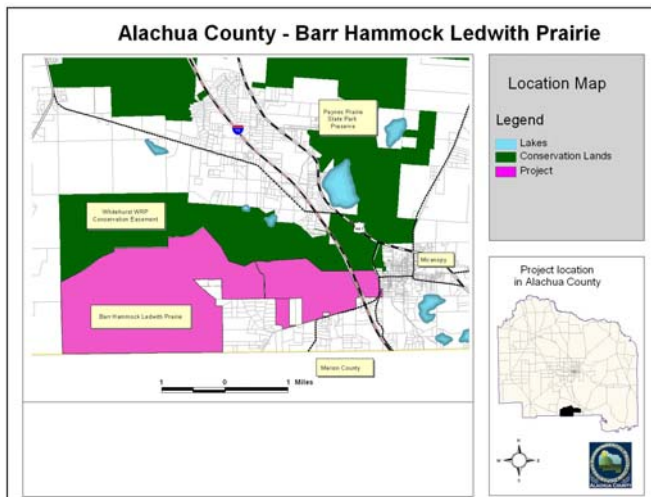
### PROJECT HIGHLIGHTS

- **Contributes to regional conservation corridor.**
- **Protects surface and groundwater.**
- **Ledwith Prairie is one of the largest intact wetlands in Alachua County.**

The purpose of the Barr Hammock Ledwith Prairie Project is to **protect, preserve and enhance** the unique **natural and cultural resources** found on the property, and provide an enjoyable and educational **passive recreation experience**

*ALACHUA COUNTY  
FOREVER REFERENDUM  
Approved in November 2000  
by the voters, to acquire,  
improve and manage the  
county's environmentally  
sensitive lands.*

- **Valuable habitat for Florida sandhill cranes, Sherman's fox squirrels and Southern bald eagles.**
- **May contain William Bartram's route in his 1774 travels from Cuscowilla (now the Town of Micanopy) to Florida's west coast.**
- **Alachua County will manage the site to enhance its natural resource values and provide a nature based passive recreation destination.**
- **Florida Communities Trust award of \$6 million to assist with acquisition.**



“The towering *Magnolia grandiflora* and transcendent Palm stand conspicuous among them...Herds of sprightly deer, squadrons of the beautiful fleet Siminole horse, flocks of turkeys, civilized communities of the sonorous watchful crane, mix together, appearing happy and contented in the enjoyment of peace...”

- - America's first native born naturalist, William Bartram, as he camped at nearby Cuscowilla in 1774



# Alachua County



The Land Conservation Board on tour of the project. Photo credit: Sean McClendon, Alachua County EPD

## Partners

- Citizens of Alachua County who approved the Bond Referendum.
- Citizens who submit nominations.
- Citizens who volunteer their time to support the Program.
- The landowners who are willing to protect their lands and leave an environmental legacy for future generations.
- The County Commission.
- The Land Conservation Board
- State and Federal acquisition and management agencies.
- Local Land Trusts

## Program Notes

- <> Alachua County Forever responds to public nominations.
- <>Property owners must be willing. Condemnation of property is not permitted under Alachua County Forever.
- <>Projects evaluated by staff and the Land Conservation Board.
- <>Criteria include protection of water resources, habitats, species, social value, manageability, and the economics of the acquisition.
- <>The County Commission approves acquisition projects.
- <>County can acquire property outright or certain rights through less-than-fee mechanisms such as conservation easements.
- <>Offers are made based on independent, private appraisals.
- <>Program funded through a \$29 million in voter-approved bonds.
- <>Program actively seeks state, federal and private grants.
- <>Properties are managed as preserves.
- <>Resource-compatible, passive recreation is encouraged on sites where appropriate.



For more information:  
 Ramesh P. Buch, Program Manager  
 Alachua County Forever  
 201 SE Second Avenue, Suite 201  
 Gainesville, Florida 32601  
 (352) 264-6800  
 rpbuch@alachuacounty.us  
<http://www.alachuacounty.us/government/depts/epd/land/>



Barr Hammock. Photo credit: Robert "Hutch" Hutchinson.



## Alachua County Commission

Lee Pinkoson  
 Chairman  
 Paula M. DeLaney  
 Vice-Chairman  
 Rodney J. Long  
 Cynthia Moore Chestnut  
 Mike Byerly  
County Manager  
 Randall H. Reid  
Environmental Protection Dept.  
 Chris Bird, Director