



Proposed Millhopper Road Fire Station Community Workshop

William Northcutt, Chief
November 2, 2017



Why are we here?

- County Commissioners have determined that implementation of the Fire Services Master Plan is appropriate
- Cost associated with Gainesville Agreement would be better spent adding fire resources in the community
- Fire Services Master Plan recommends Gainesville Station 7 be relocated and a new station be added on Millhopper Rd



Fire and EMS Master Plan

- Fire and EMS Master Plans adopted by the BoCC in 2004 and 2012
- County has begun operating the stations formerly operated by Archer, Hawthorne and Waldo
- No stations have been added to the response system



Master Plan Recommendations

- Additional Stations recommended
 - Millhopper Rd
 - 10000 Blk SW 24th Ave
 - Hwy 441 at Turkey Creek
 - Hwy 20 at CR 234 (Near Windsor)
 - Southwest Williston Rd West of the Interstate (staff recommendation, not MP)
- Gainesville Station 7 relocation to US 441 and 34th Blvd
 - Recommended by Master Plan and 2016 Gainesville City Station Location and Staffing Study (p31)



Fire Services Assistance Agreement (FSAA)

- Some form of service agreement with the City of Gainesville in place since the 1980's
- Current agreement is reimbursed based on unit responses into Unincorporated County and City
- Uses actual service received and actual cost for service as the basis for reimbursement



FSAA continued

- County and City residents within the former Urban Reserve receive fastest unit response
- County stations closer to some City properties
- City stations closer to some properties in the unincorporated areas- in some cases much closer



Master Plan –vs- FSAA

Advantages and Disadvantages

Master Plan- Advantages

- Implementing fire services throughout the unincorporated areas of the County would result in Board of County Commission (BoCC) control of the level of service as well as the cost of those services
- Reduction in payment to the City from approximately \$1.5mil in FY18 to offset Master Plan costs
- Eliminates the uncertainty of costs associated with the FSAA caused by fire unit response growth
- Results in improvements in service and ISO rates for residents not currently within 5 miles of a fire station
- Results in improvement in Insurance Service (ISO) classification from Class 9 to Class 3 for property owners who are currently served by the City but are not within 1000 feet of a fire hydrant



Master Plan-vs-FSAA

Master Plan- Advantages Continued

- Would allow all developed parcels near Southwest 122nd Street (Parker Rd) to be located within 5 miles of a fire station reducing the ISO Class 10 rating to Class 3
- Will save staff time that is used to track responses to be billed under the FSAA
- Staffing of stations in areas currently served by contracted departments would result in improvements in the ISO rating from Class 3x (same rates as former Class 9) or 10 to a Class 3 which increases insurance options and saving on premiums
- May encourage consolidation of fire protection services
- Areas where ACFR begins service would see improvements and insurance cost savings



Master Plan-vs-FSAA

Master Plan- Disadvantages

- Would result in initial capital costs for stations and equipment
- Results in increased costs to address fire stations needed in the former Gainesville Urban Reserve (This would occur if cost under the FSAA did not increase)
- Increases response times for some property owners currently served by the City
- Results in ACFR responses into the City to access some unincorporated properties



Master Plan-vs-FSAA

Master Plan- Disadvantages continued

- If fully implemented it would cause increases to the MSTU-Fire and could result in Archer, Waldo and Hawthorne exceeding the ad valorem 10 mill cap
- Eliminates the automatic aid resources from the City
- Initial capital cost may not be covered by savings from canceling the FSAA



Master Plan-vs-FSAA

FSAA- Advantages

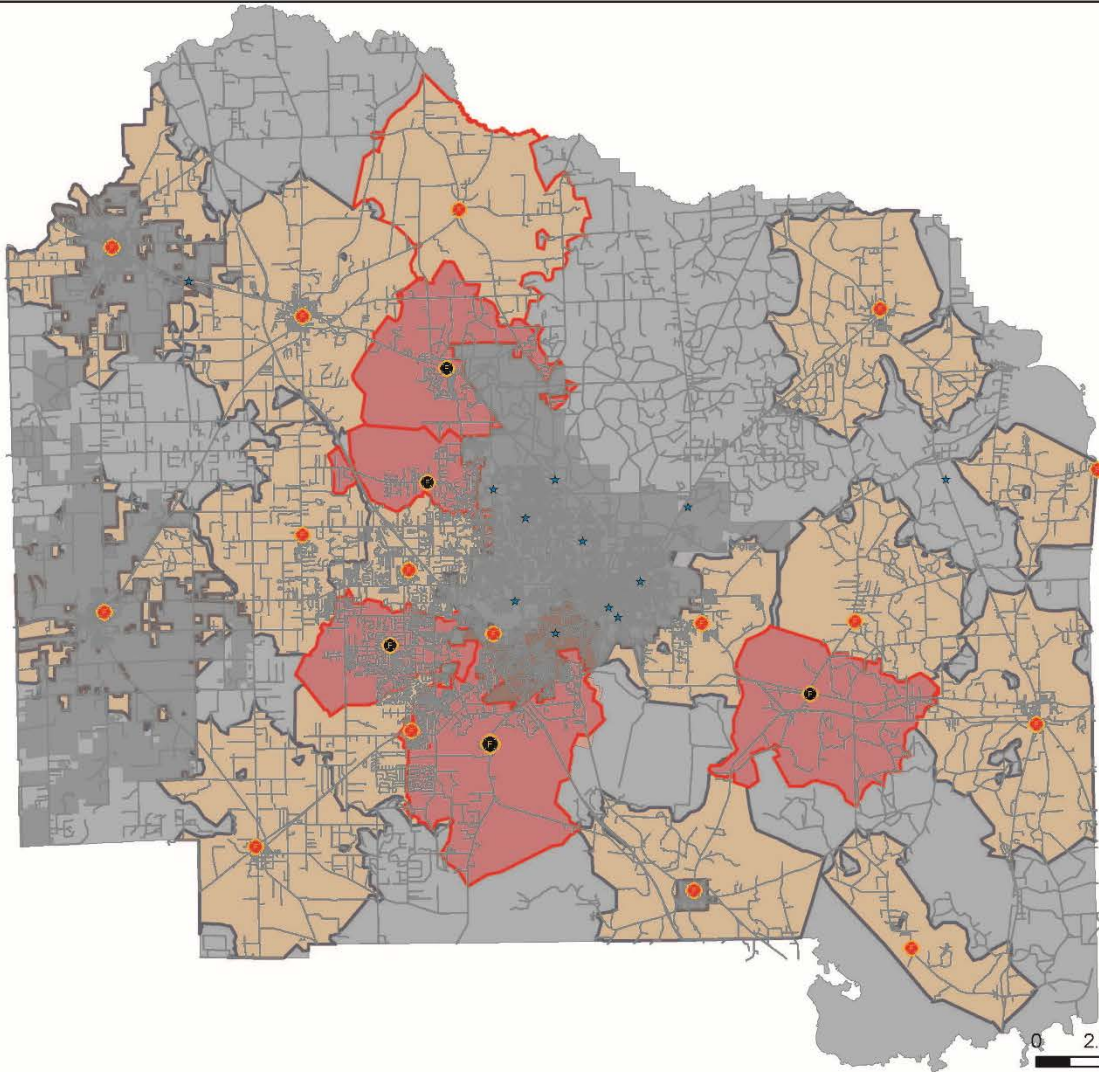
- Insures closest/fastest available fire resource is dispatched to all calls for service
- All eleven City fire units could be dispatched to incidents in the Fire Services Assistance area in the initial dispatch
- Delays the need for added fire stations including associated staff
- Insures dispatch procedures remain consistent between agencies
- Delays need for added County Fire Stations
- Increases number of units for automatic dispatch
- Insures common terminology



Master Plan-vs-FSAA

FSAA- Disadvantages

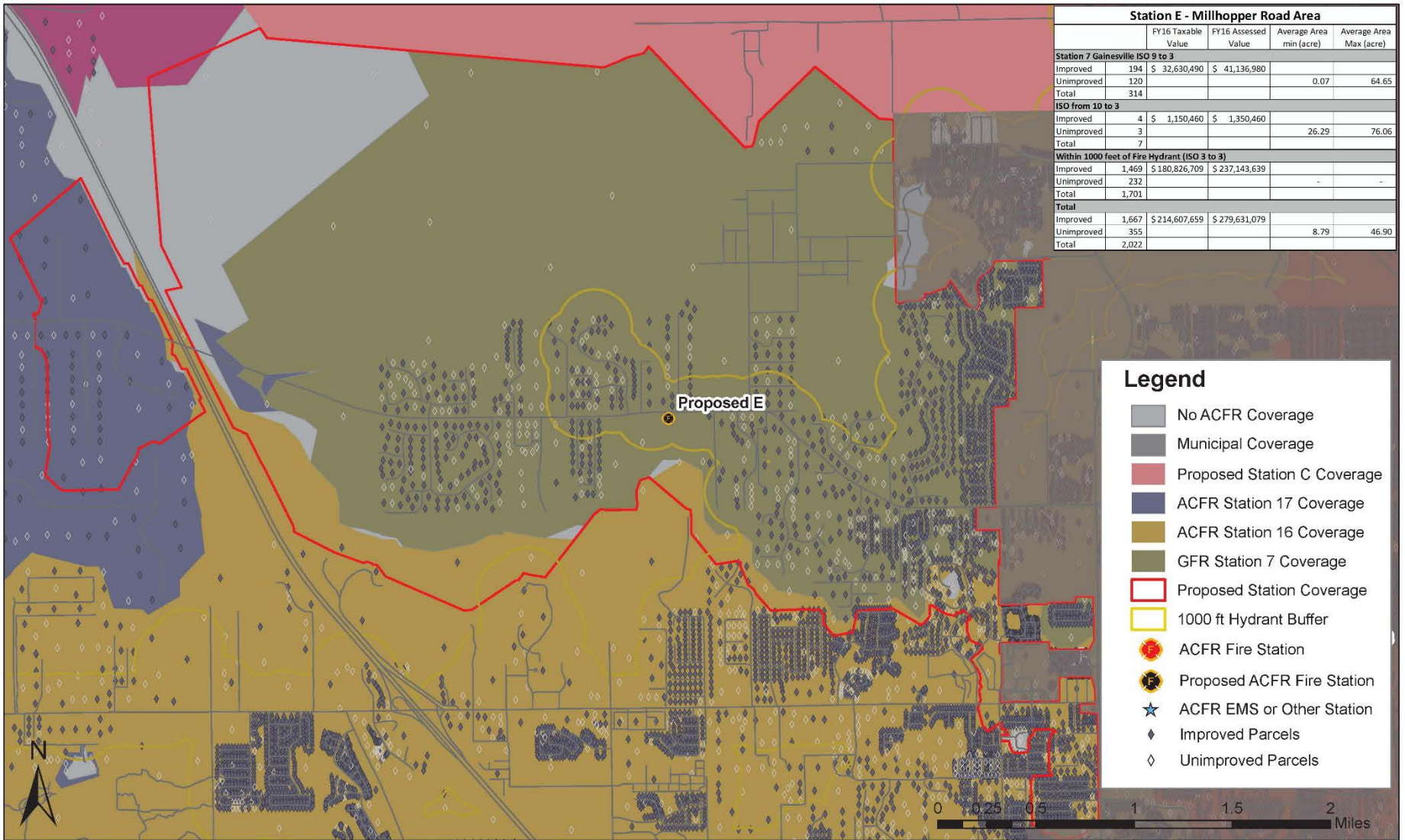
- Cost to the County are impacted by new station location decisions made by the City
- Increases in calls for service impacts cost to the County
- Limits funds available for implementation of the Fire Services Master Plan
- County does not control where new City stations are located or the financial impact of the new stations



Legend

- No ACFR Coverage
- Municipal Coverage
- Current ACFR Coverage
- Proposed Station Assimilation
- Proposed Station Coverage
- ACFR Fire Station
- Proposed ACFR Fire Station
- ★ ACFR EMS or Other Station



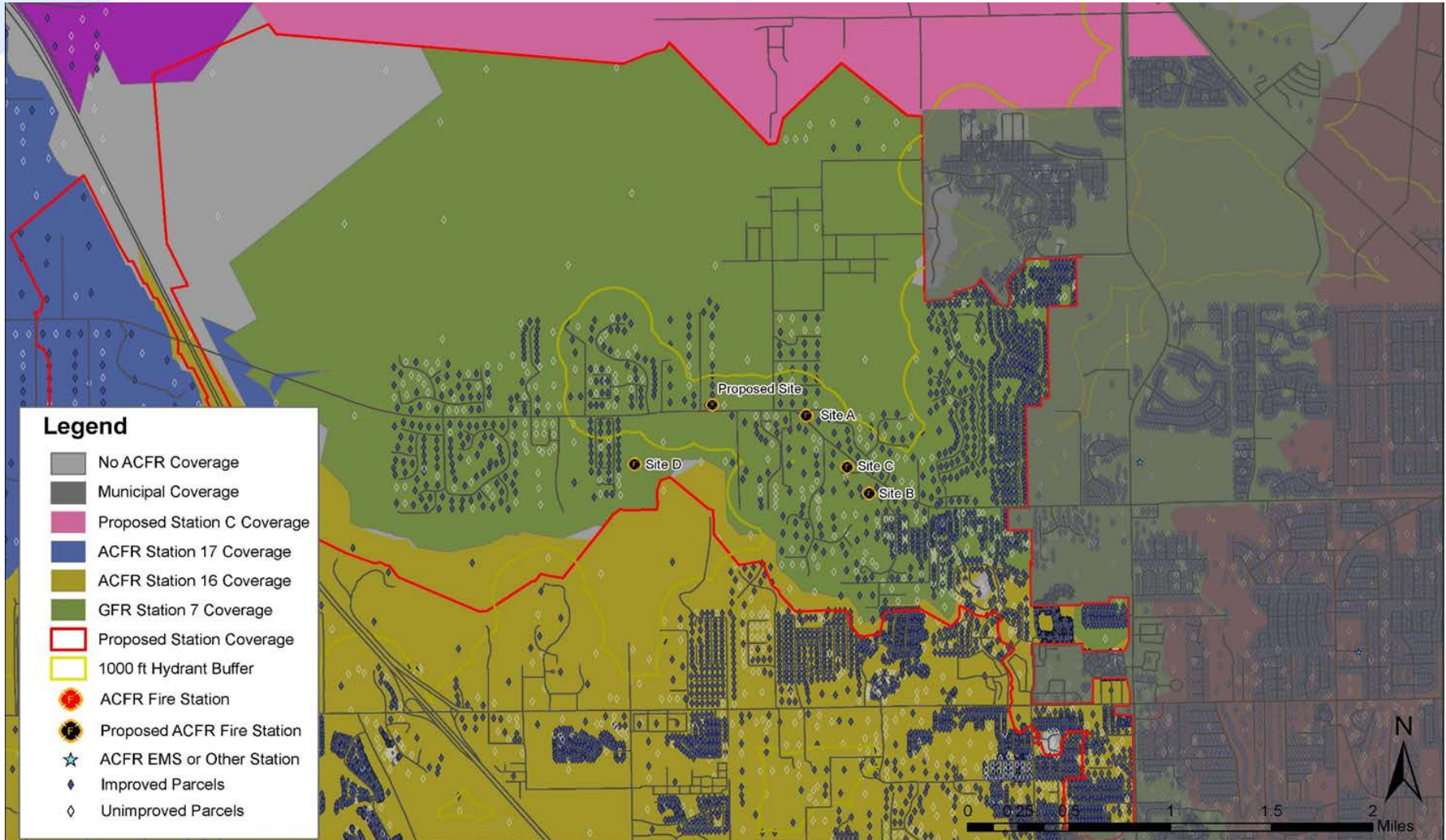


Station E - Millhopper Road Area				
	FY16 Taxable Value	FY16 Assessed Value	Average Area min (acre)	Average Area Max (acre)
Station 7 Gainesville ISO 9 to 3				
Improved	194	\$ 32,630,490	\$ 41,136,980	
Unimproved	120			0.07 64.65
Total	314			
ISO from 10 to 3				
Improved	4	\$ 1,150,460	\$ 1,350,460	
Unimproved	3			26.29 76.06
Total	7			
Within 1000 feet of Fire Hydrant (ISO 3 to 3)				
Improved	1,469	\$ 180,826,709	\$ 237,143,639	
Unimproved	232			- -
Total	1,701			
Total				
Improved	1,667	\$ 214,607,659	\$ 279,631,079	
Unimproved	355			8.79 46.90
Total	2,022			

- Legend**
- No ACFR Coverage
 - Municipal Coverage
 - Proposed Station C Coverage
 - ACFR Station 17 Coverage
 - ACFR Station 16 Coverage
 - GFR Station 7 Coverage
 - Proposed Station Coverage
 - 1000 ft Hydrant Buffer
 - ACFR Fire Station
 - Proposed ACFR Fire Station
 - ACFR EMS or Other Station
 - Improved Parcels
 - Unimproved Parcels



Alternate sites considered





Proposed Site Plan- Option A (preferred)



SITE PLAN - OPTION A (PHASE II)

SCALE: 1" = 30'-0"



Proposed Site Plan- Option B



SITE PLAN - OPTION B (PHASE II)

SCALE 1" = 30' 0"



Option A- Phase 1



SITE PLAN - OPTION A (PHASE I)

SCALE: 1" = 30'-0"



Option B- Phase 1

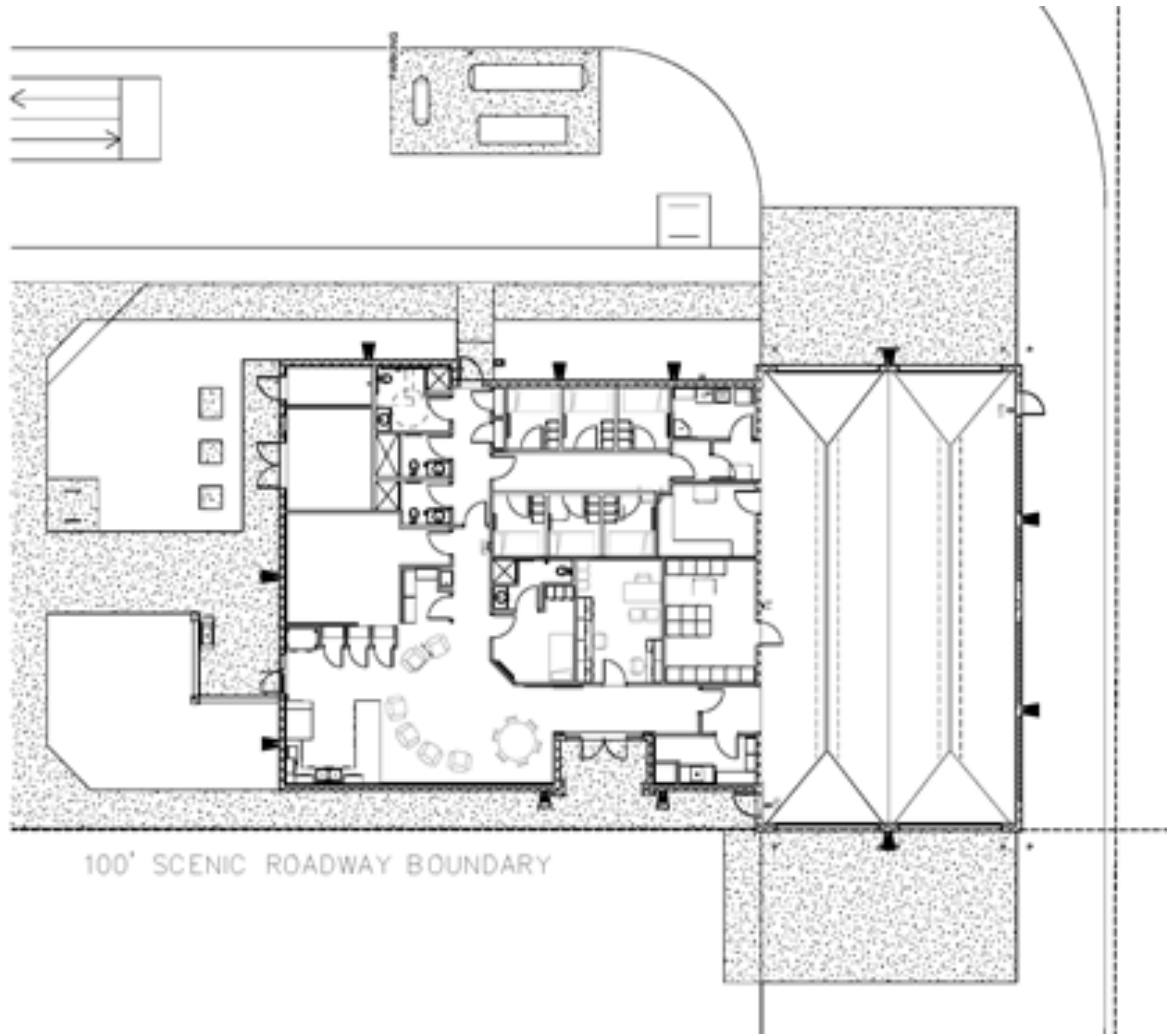


SITE PLAN - OPTION B (PHASE I)

SCALE: 1" = 30'-0"



Building Layout





The Next Step

- Special Use Permit Application to be completed
- Meet with the Plan Board to seek approval in December 13th or 20th, Time 6PM in Commission Chambers
- January BoCC meeting: Date TBD, Time 6PM in Commission Chambers



www.alachuacounty.us/Depts/PublicSafety

352-384-3101

Dial 911 in an emergency