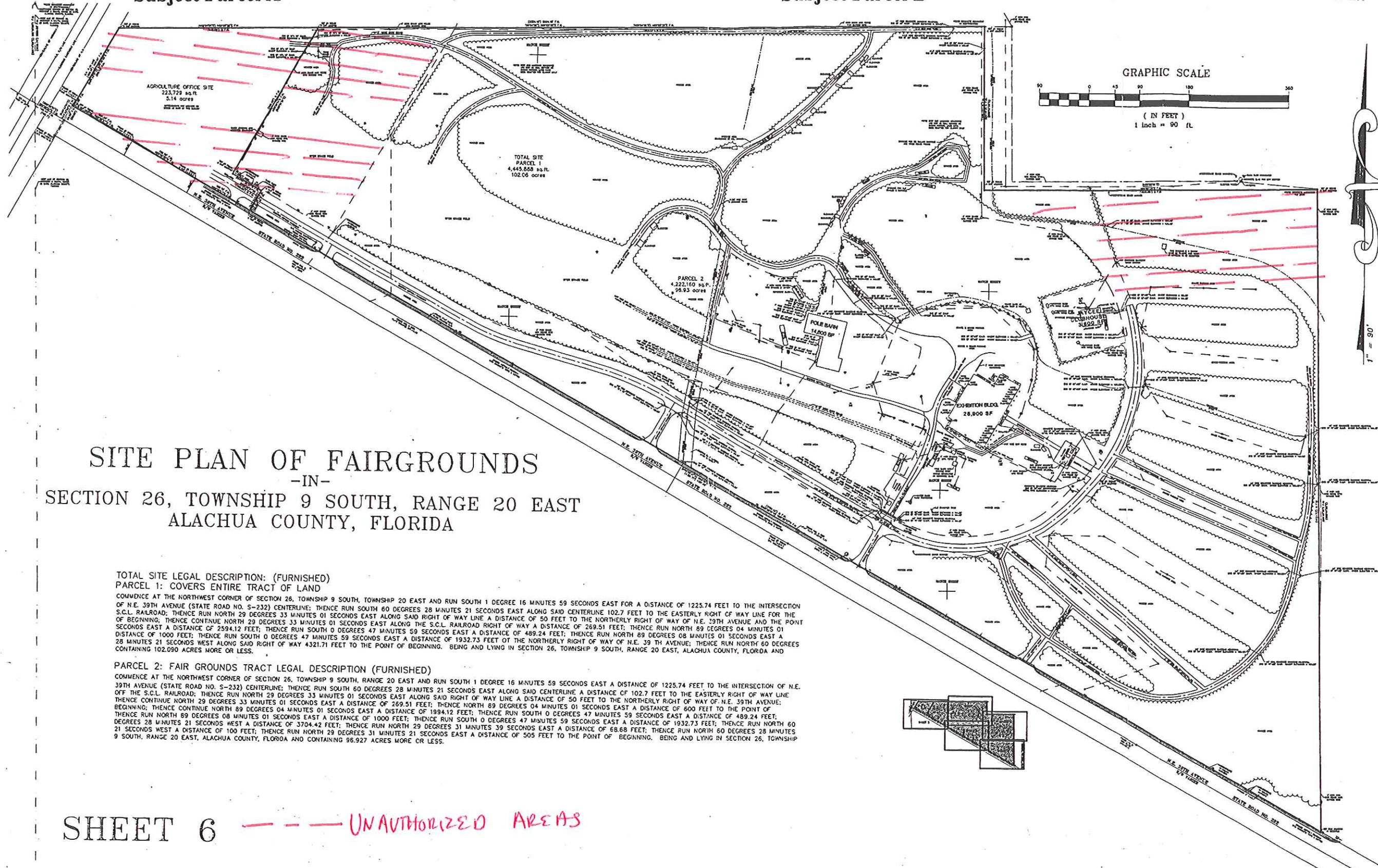


Subject Parcel A

Subject Parcel B



SITE PLAN OF FAIRGROUNDS

-IN-

SECTION 26, TOWNSHIP 9 SOUTH, RANGE 20 EAST
 ALACHUA COUNTY, FLORIDA

TOTAL SITE LEGAL DESCRIPTION: (FURNISHED)
 PARCEL 1: COVERS ENTIRE TRACT OF LAND

COMMENCE AT THE NORTHWEST CORNER OF SECTION 26, TOWNSHIP 9 SOUTH, RANGE 20 EAST AND RUN SOUTH 1 DEGREE 16 MINUTES 59 SECONDS EAST FOR A DISTANCE OF 1225.74 FEET TO THE INTERSECTION OF N.E. 39TH AVENUE (STATE ROAD NO. S-232) CENTERLINE; THENCE RUN SOUTH 60 DEGREES 28 MINUTES 21 SECONDS EAST ALONG SAID CENTERLINE 102.7 FEET TO THE EASTERLY RIGHT OF WAY LINE FOR THE S.C.L. RAILROAD; THENCE RUN NORTH 29 DEGREES 33 MINUTES 01 SECONDS EAST ALONG SAID RIGHT OF WAY LINE A DISTANCE OF 50 FEET TO THE NORTHERLY RIGHT OF WAY LINE OF N.E. 39TH AVENUE AND THE POINT OF BEGINNING; THENCE CONTINUE NORTH 29 DEGREES 33 MINUTES 01 SECONDS EAST ALONG THE S.C.L. RAILROAD RIGHT OF WAY A DISTANCE OF 269.51 FEET; THENCE RUN NORTH 89 DEGREES 04 MINUTES 01 SECONDS EAST A DISTANCE OF 2594.12 FEET; THENCE RUN SOUTH 0 DEGREES 47 MINUTES 59 SECONDS EAST A DISTANCE OF 489.24 FEET; THENCE RUN NORTH 89 DEGREES 08 MINUTES 01 SECONDS EAST A DISTANCE OF 1000 FEET; THENCE RUN SOUTH 0 DEGREES 47 MINUTES 59 SECONDS EAST A DISTANCE OF 1932.73 FEET OF THE NORTHERLY RIGHT OF WAY OF N.E. 39 TH AVENUE; THENCE RUN NORTH 60 DEGREES 28 MINUTES 21 SECONDS WEST ALONG SAID RIGHT OF WAY 4321.71 FEET TO THE POINT OF BEGINNING. BEING AND LYING IN SECTION 26, TOWNSHIP 9 SOUTH, RANGE 20 EAST, ALACHUA COUNTY, FLORIDA AND CONTAINING 102.090 ACRES MORE OR LESS.

PARCEL 2: FAIR GROUNDS TRACT LEGAL DESCRIPTION (FURNISHED)

COMMENCE AT THE NORTHWEST CORNER OF SECTION 26, TOWNSHIP 9 SOUTH, RANGE 20 EAST AND RUN SOUTH 1 DEGREE 16 MINUTES 59 SECONDS EAST A DISTANCE OF 1225.74 FEET TO THE INTERSECTION OF N.E. 39TH AVENUE (STATE ROAD NO. S-232) CENTERLINE; THENCE RUN SOUTH 60 DEGREES 28 MINUTES 21 SECONDS EAST ALONG SAID CENTERLINE A DISTANCE OF 102.7 FEET TO THE EASTERLY RIGHT OF WAY LINE OFF THE S.C.L. RAILROAD; THENCE RUN NORTH 29 DEGREES 33 MINUTES 01 SECONDS EAST ALONG SAID RIGHT OF WAY LINE A DISTANCE OF 50 FEET TO THE NORTHERLY RIGHT OF WAY OF N.E. 39TH AVENUE; THENCE CONTINUE NORTH 29 DEGREES 33 MINUTES 01 SECONDS EAST A DISTANCE OF 269.51 FEET; THENCE NORTH 89 DEGREES 04 MINUTES 01 SECONDS EAST A DISTANCE OF 600 FEET TO THE POINT OF BEGINNING; THENCE CONTINUE NORTH 89 DEGREES 04 MINUTES 01 SECONDS EAST A DISTANCE OF 1994.12 FEET; THENCE RUN SOUTH 0 DEGREES 47 MINUTES 59 SECONDS EAST A DISTANCE OF 489.24 FEET; THENCE RUN NORTH 89 DEGREES 08 MINUTES 01 SECONDS EAST A DISTANCE OF 1000 FEET; THENCE RUN SOUTH 0 DEGREES 47 MINUTES 59 SECONDS EAST A DISTANCE OF 1932.73 FEET; THENCE RUN NORTH 60 DEGREES 28 MINUTES 21 SECONDS WEST A DISTANCE OF 3704.42 FEET; THENCE RUN NORTH 29 DEGREES 31 MINUTES 39 SECONDS EAST A DISTANCE OF 68.88 FEET; THENCE RUN NORTH 60 DEGREES 28 MINUTES 21 SECONDS WEST A DISTANCE OF 100 FEET; THENCE RUN NORTH 29 DEGREES 31 MINUTES 39 SECONDS EAST A DISTANCE OF 505 FEET TO THE POINT OF BEGINNING. BEING AND LYING IN SECTION 26, TOWNSHIP 9 SOUTH, RANGE 20 EAST, ALACHUA COUNTY, FLORIDA AND CONTAINING 96.927 ACRES MORE OR LESS.

SHEET 6

--- UNAUTHORIZED AREAS