

Alachua Excels

Mission-Management Separation with Shared Responsibility for Policy and Administration

Dimensions of Governmental Process

Illustrative Tasks For Commission

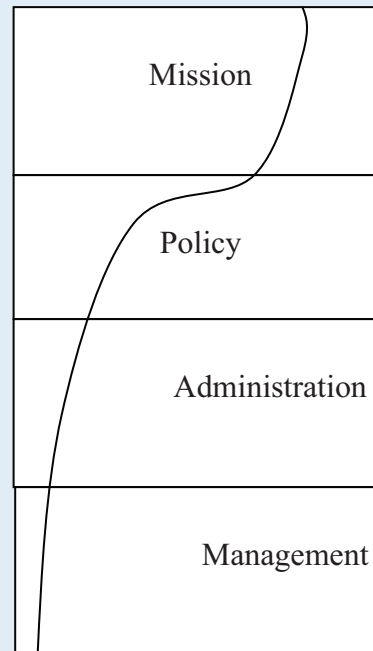
Determine “purpose,” scope of services, tax level, and constitutional issues.

Pass ordinances, approve new projects and programs, ratify budget.

Make implementing decisions, e.g., site selection, handle complaints, and oversee administration.

Suggest management changes to the manager, review organizational performance in manager’s appraisal.

Commission’s Sphere



Illustrative Tasks For Administrators

Advise (what county “can” do may influence what it “should” do) analyze conditions and trends.

Make recommendations on all decisions, formulate budget, and determine service distribution formulae.

Establish practices and procedures and make decisions for implementing policy.

Control the human, material and informational resources of organization to support policy and administrative functions.

Manager’s Sphere

The curved line suggests the division between the Commission’s and the Manager’s spheres of activity, with the Commission to the left and the Manager to the right of the line.

The division presented is intended to roughly approximate a “proper” degree of separation and sharing. Shifts to either the left or right would indicate improper incursions



ALACHUA COUNTY, FLORIDA

ALACHUA EXCELS

County Manager’s Office
Fiscal Year 2009