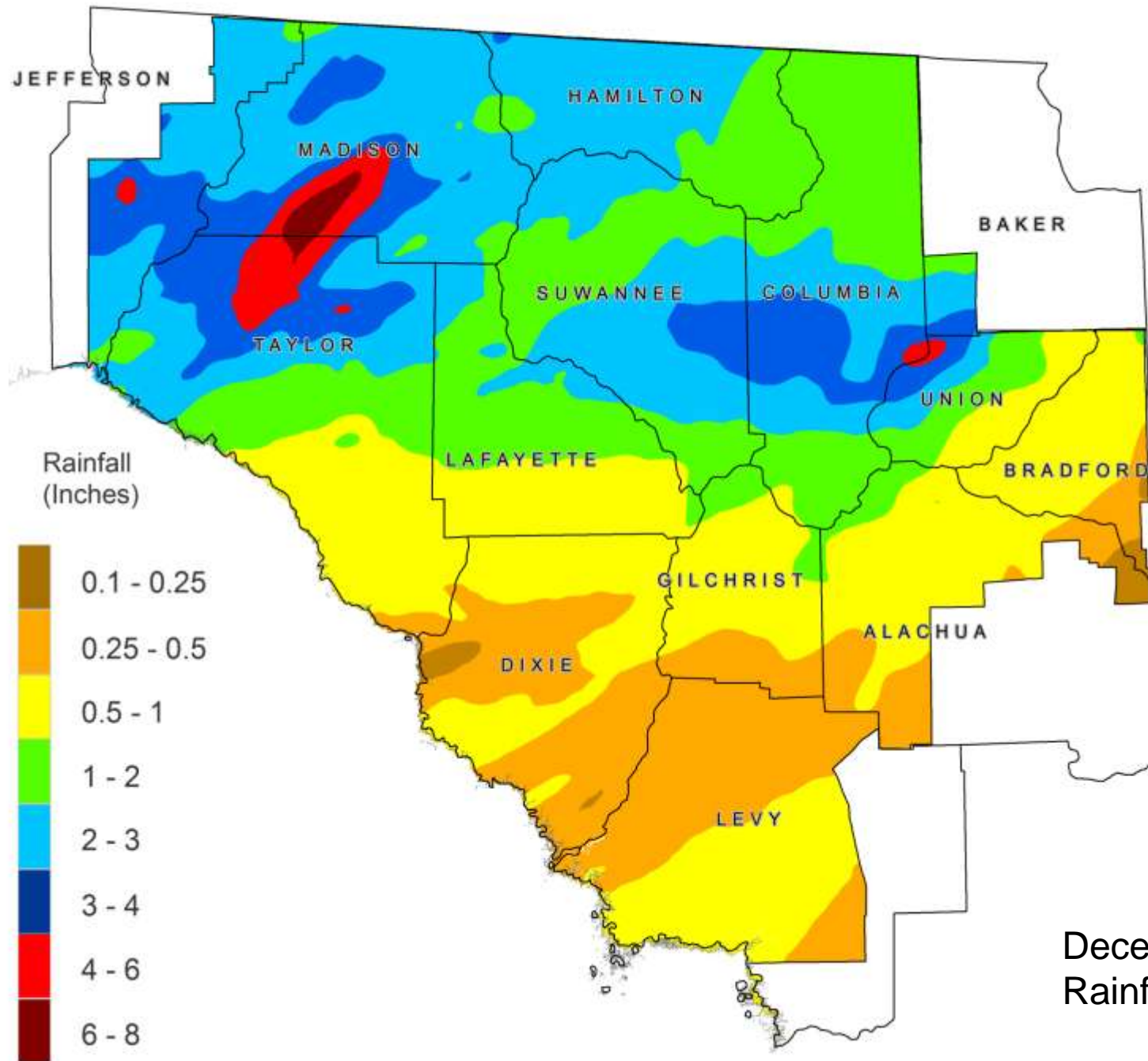


*Alapaha River above
Jennings*



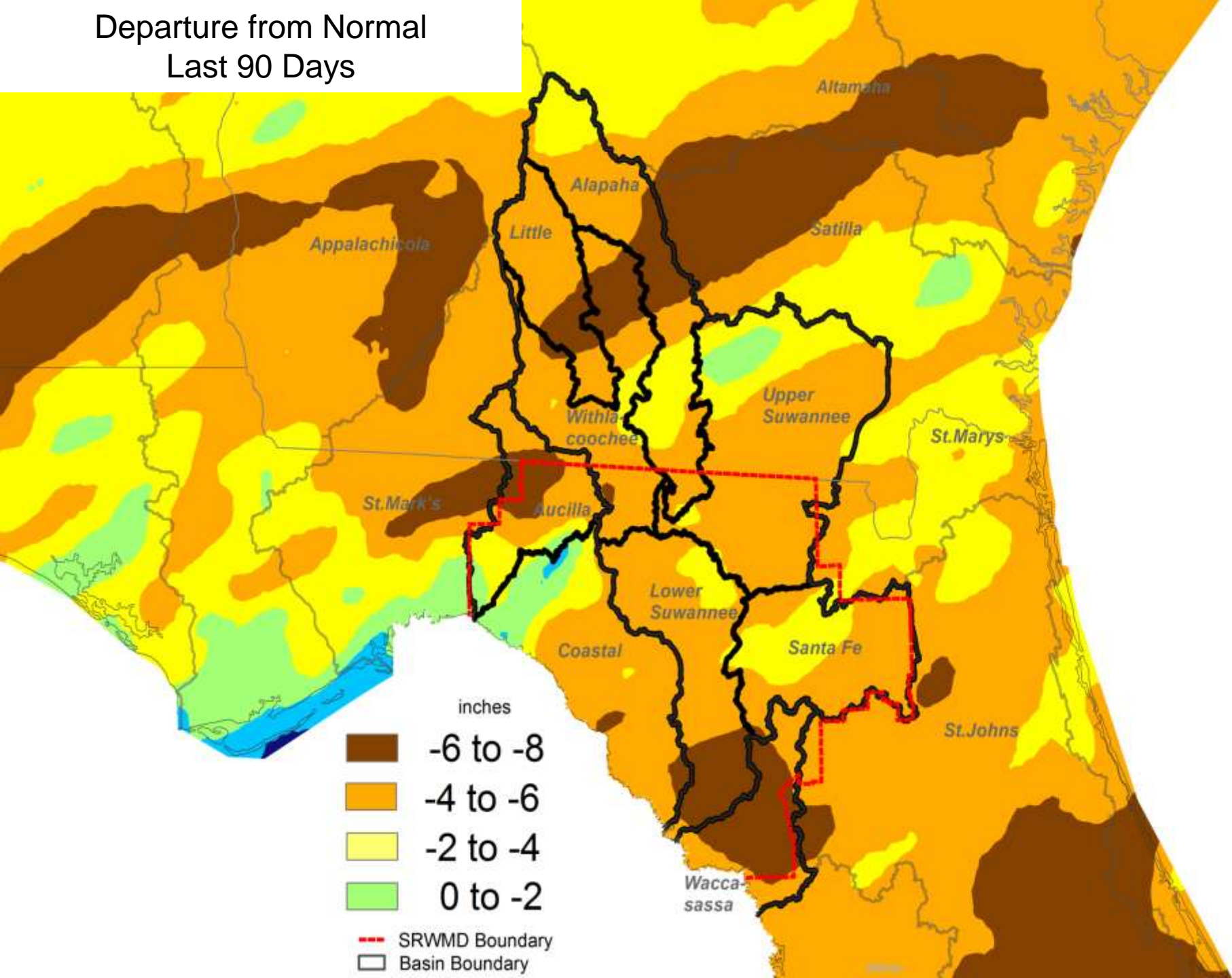
Hydrologic Conditions December 2011

SUWANNEE RIVER WATER MANAGEMENT DISTRICT



December
Rainfall

Departure from Normal Last 90 Days

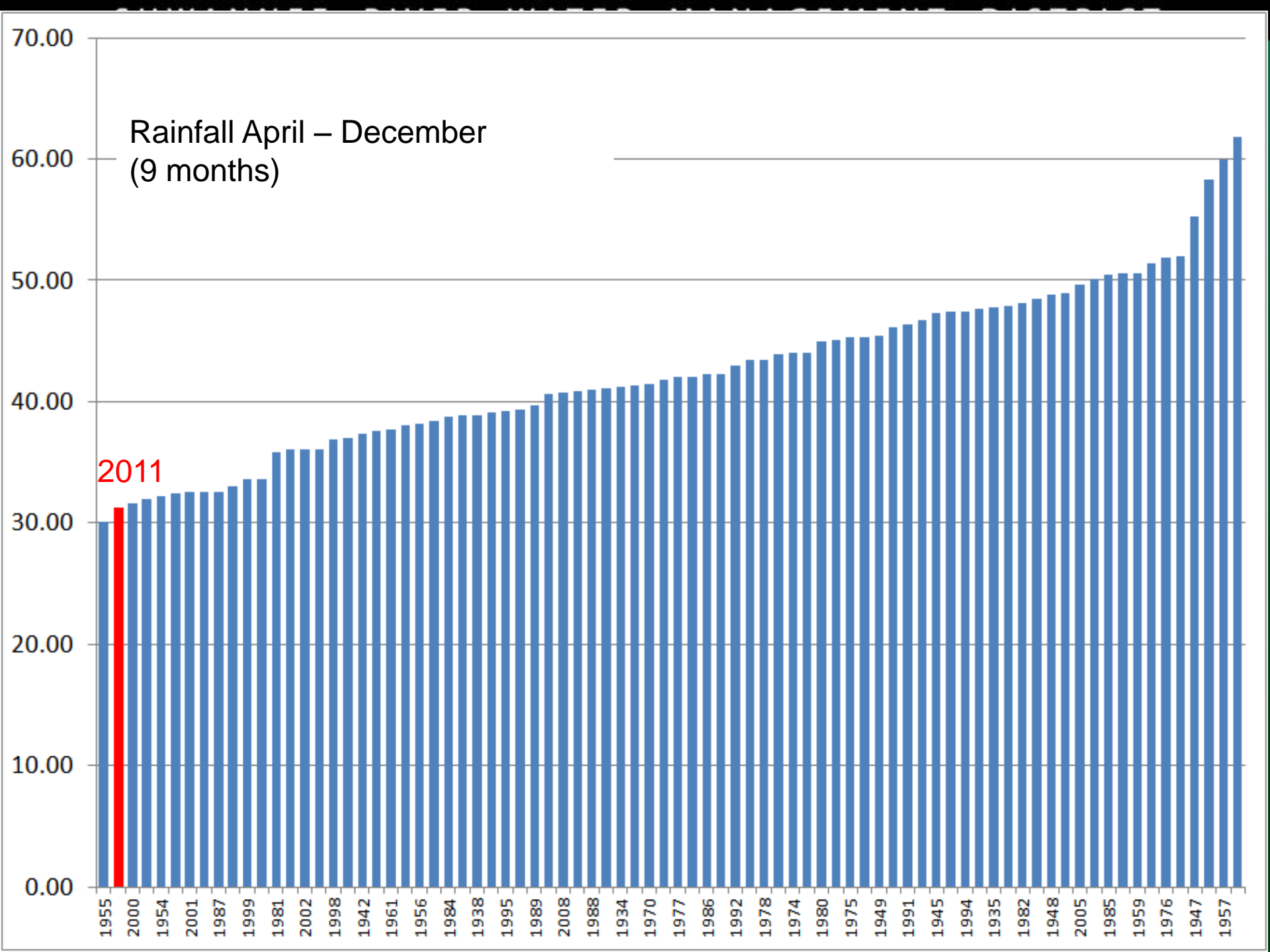


2011 Rainfall

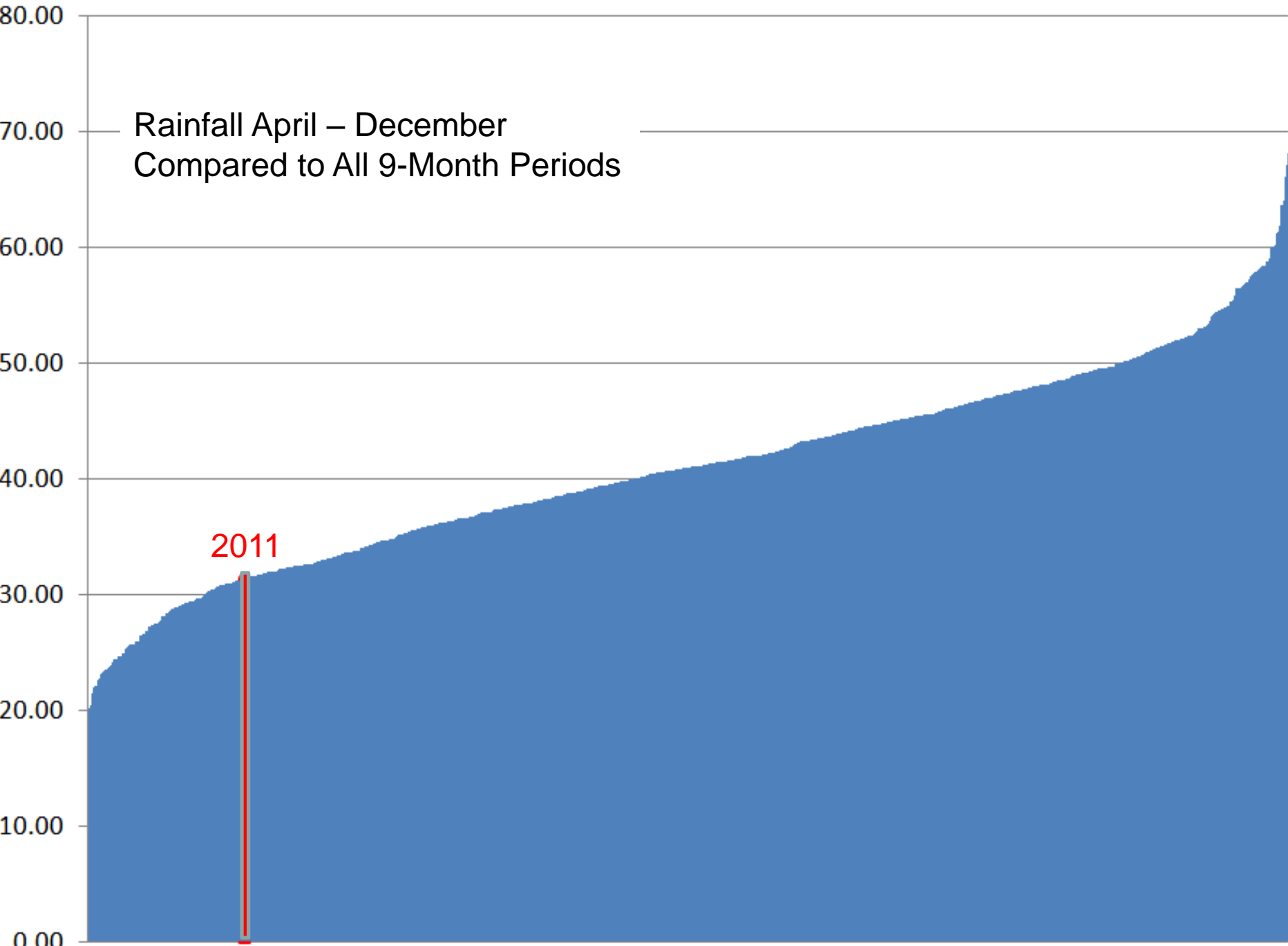
- No records were set
- 2nd lowest total from April – December

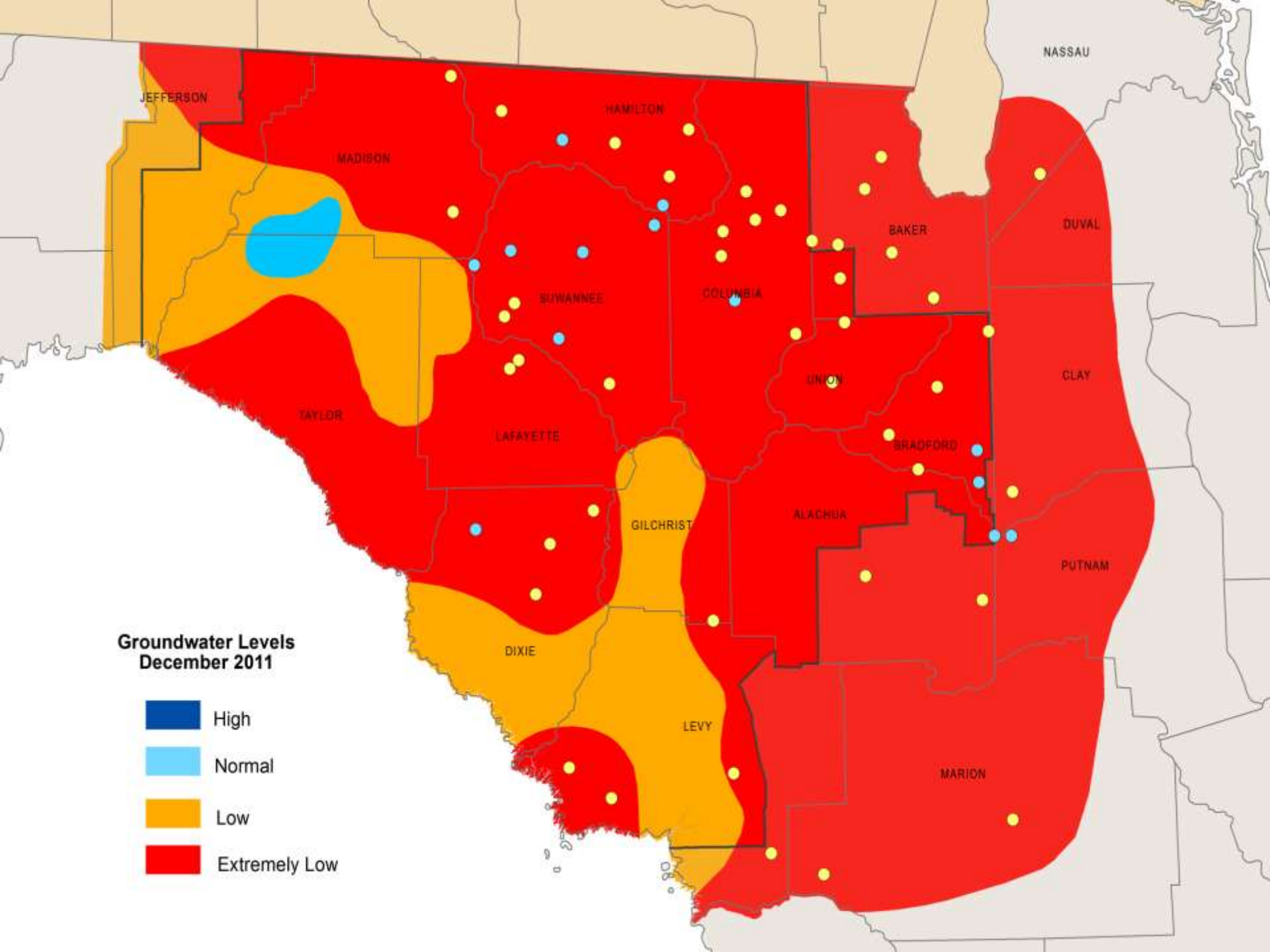
Rainfall April – December (9 months)

2011

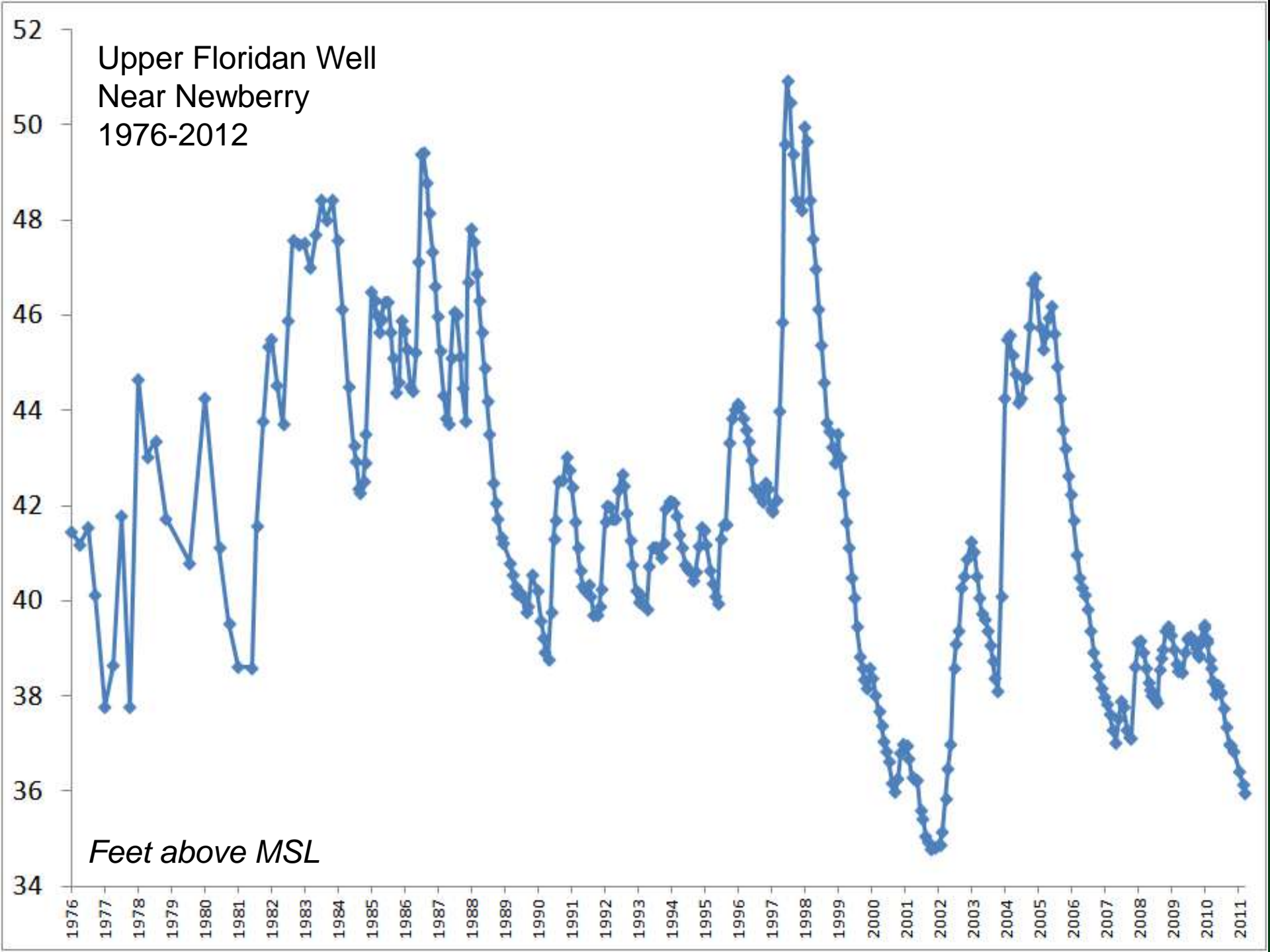


Rainfall April – December
Compared to All 9-Month Periods



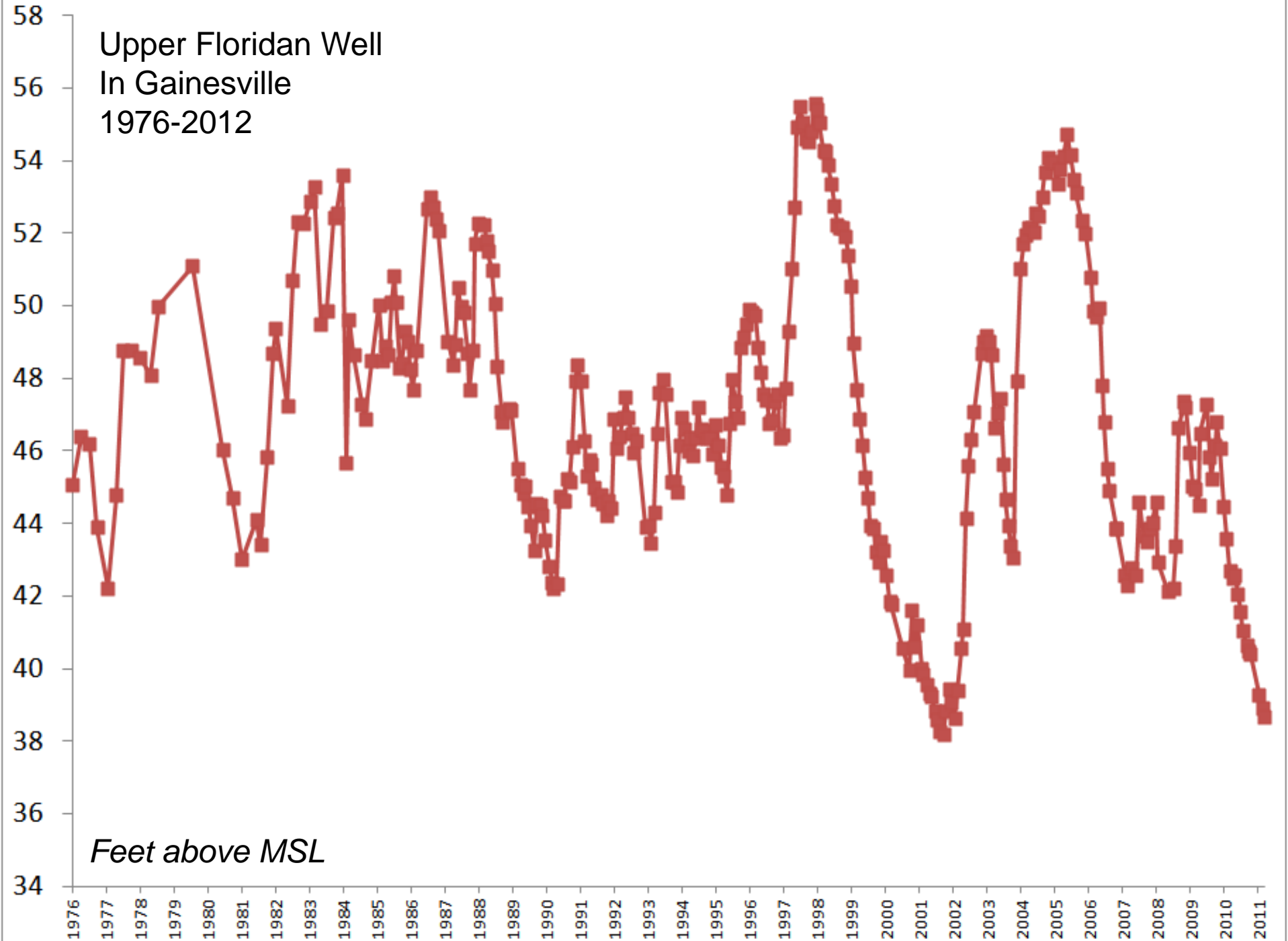


Upper Floridan Well
Near Newberry
1976-2012



Feet above MSL

Upper Floridan Well
In Gainesville
1976-2012

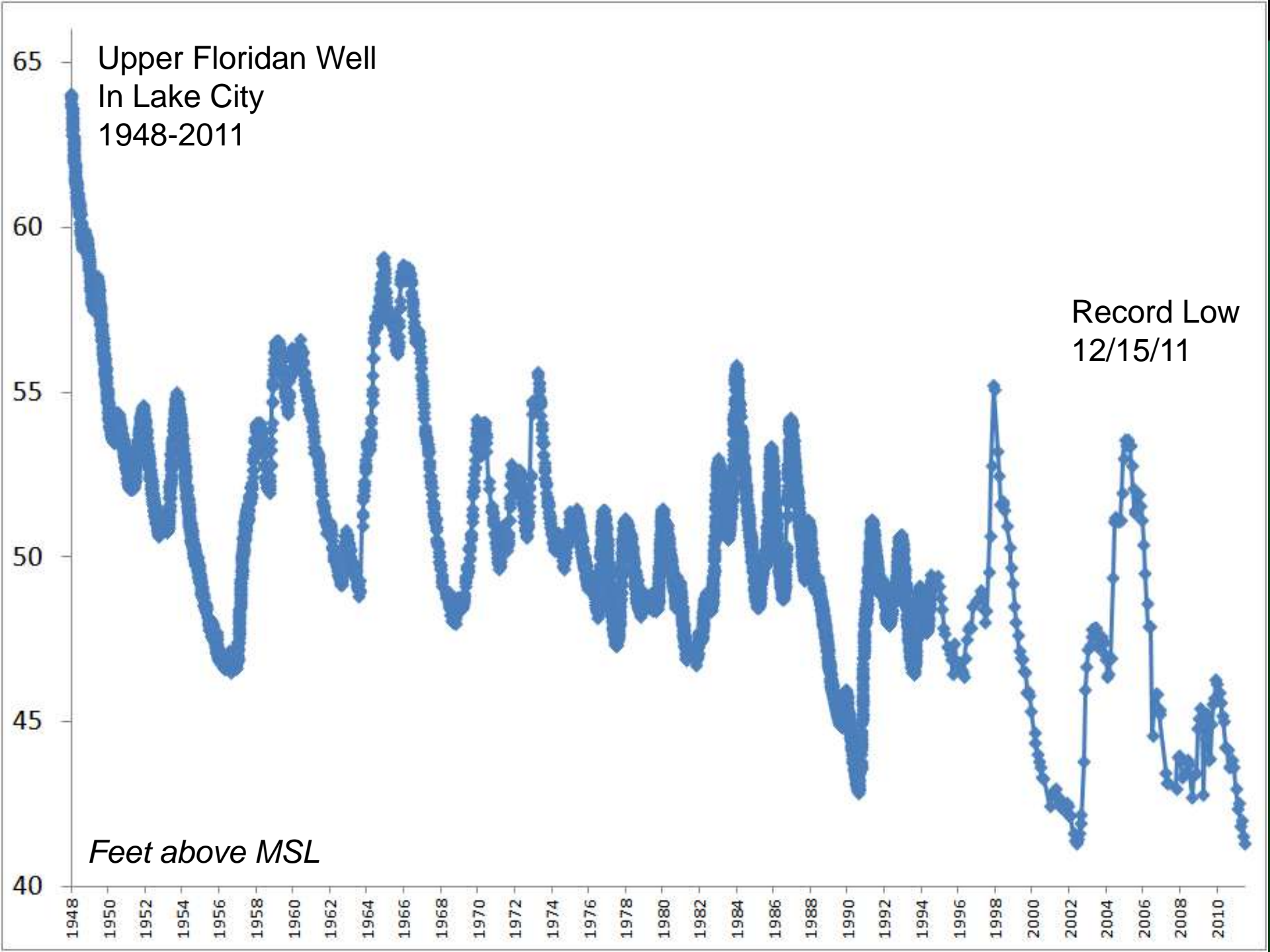


Feet above MSL

Upper Floridan Well
In Lake City
1948-2011

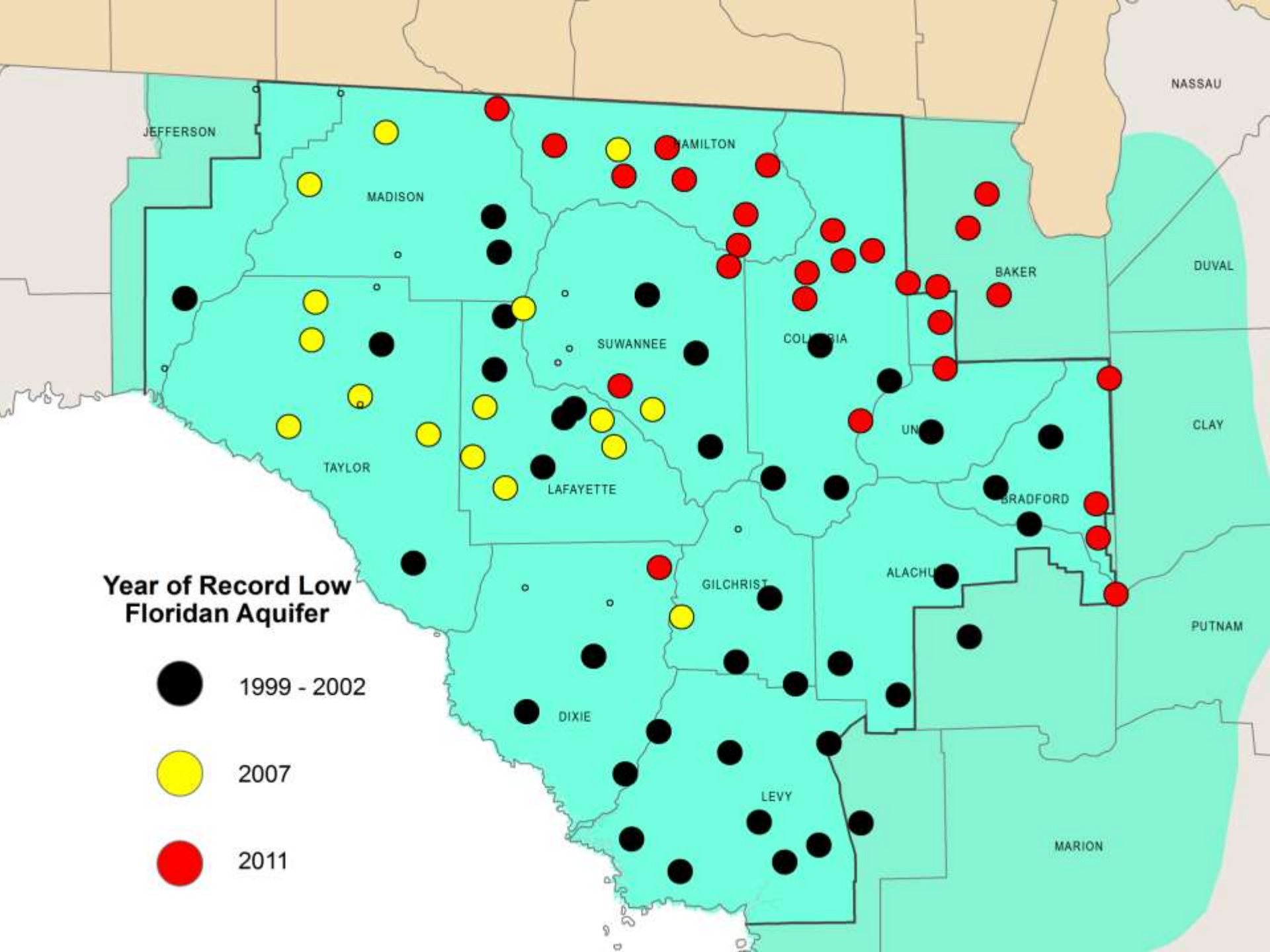
Record Low
12/15/11

Feet above MSL



**Year of Record Low
Floridan Aquifer**

- 1999 - 2002
- 2007
- 2011



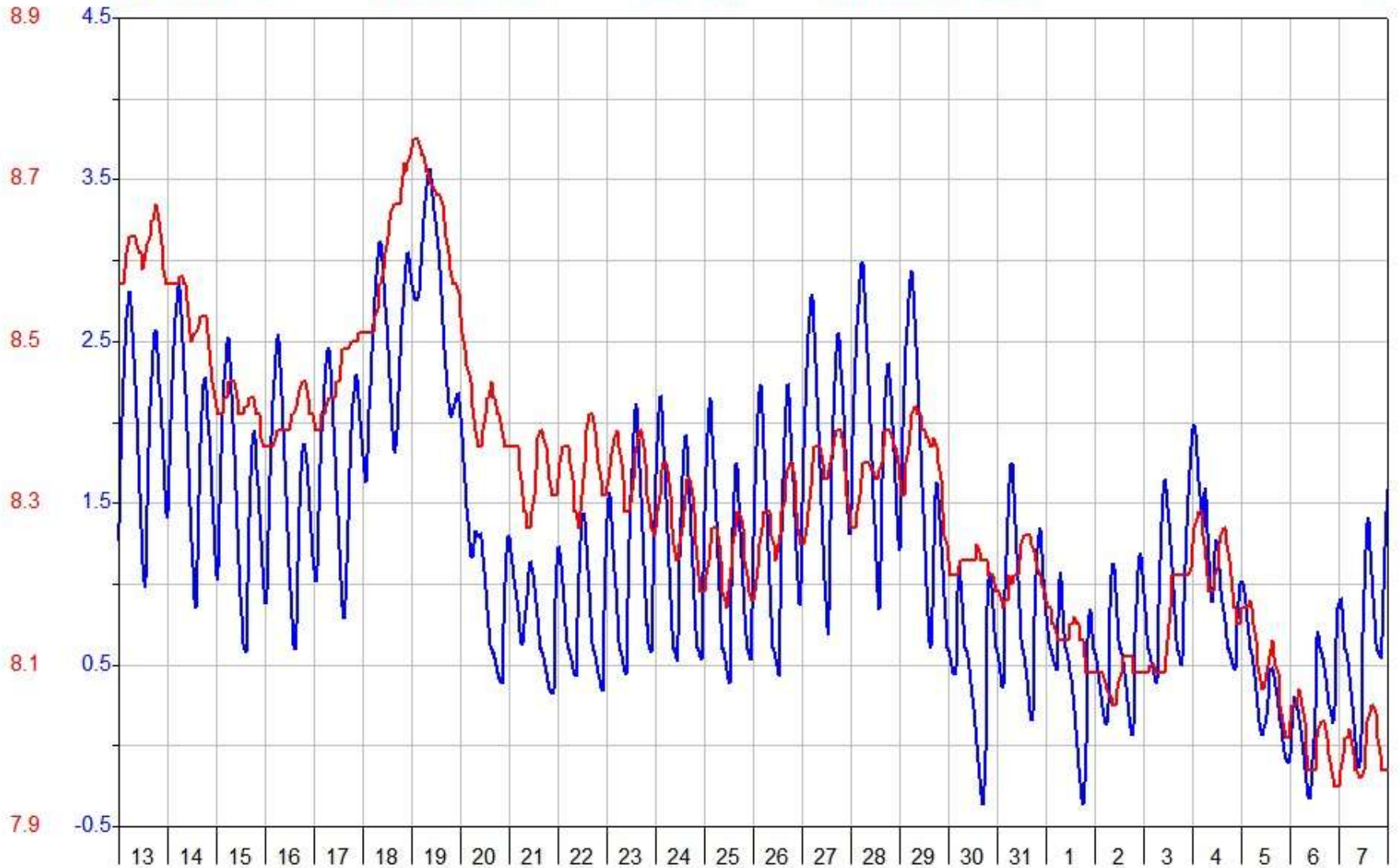
Suwannee River Water Management District

Period 26 Day Plot Start 00:00_10/13/2011

2011

Interval 1 Hour Plot End 00:00_11/08/2011

— 02323567	Manatee Springs	232.00	Line	Level (ft-NGVD29)	Unit Value Level	J
— S141429001	Rosewood Tower	111.00	Line	Bore Level ft-NGVD29		J



Suwannee River Water Management District

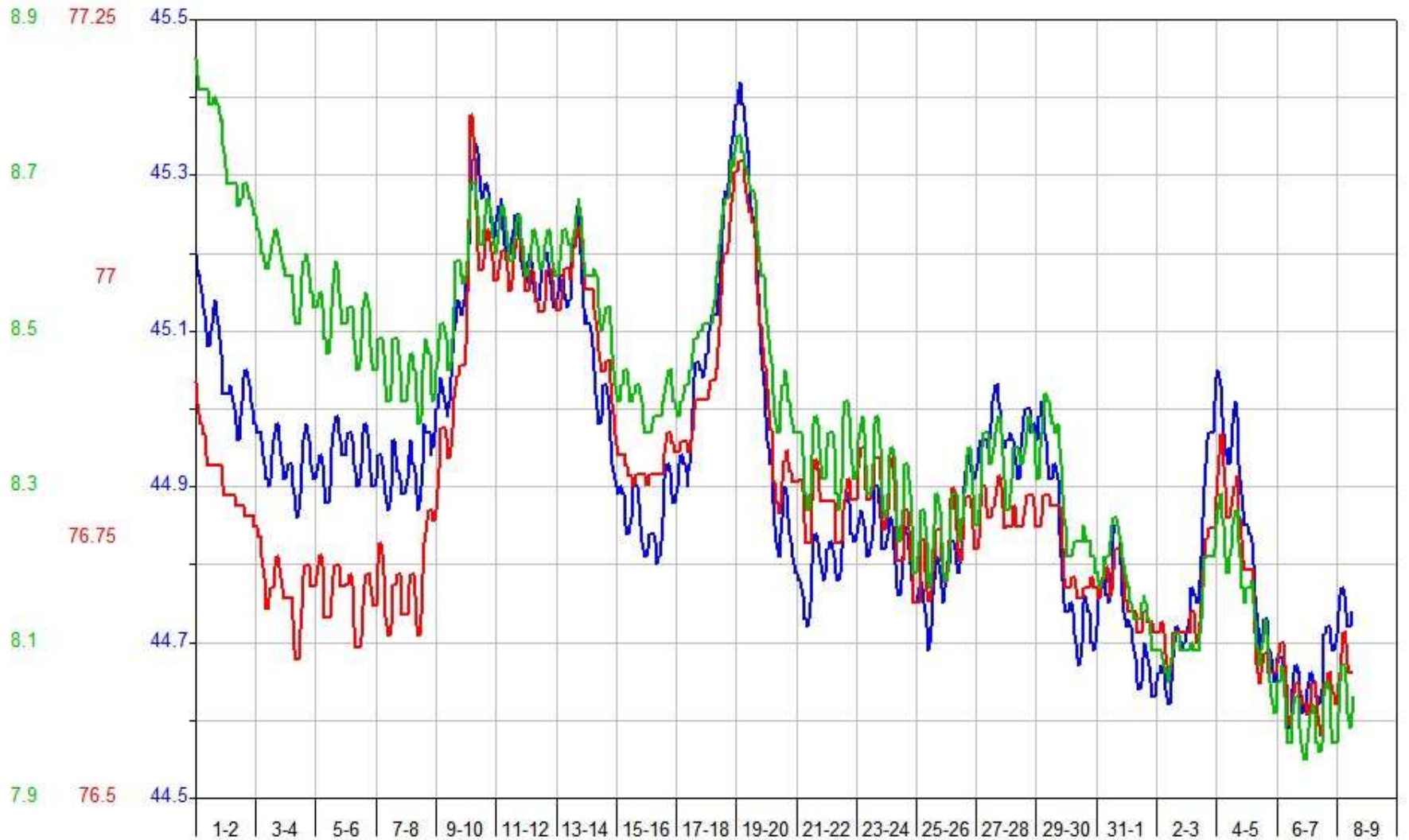
HYPLOT V133 Output 11/08/2011

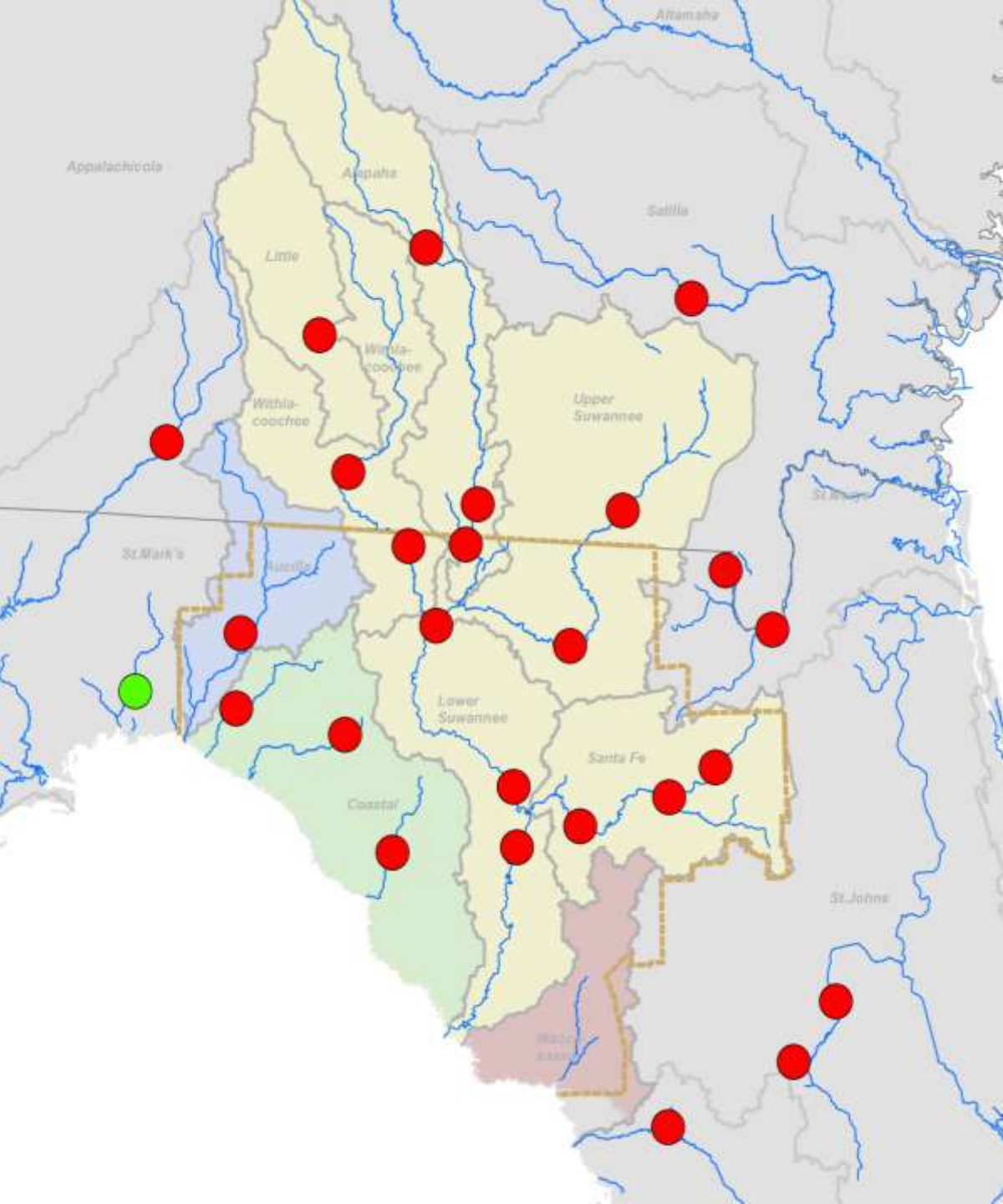
Period 40 Day Plot Start 00:00_10/01/2011

2011

Interval 2 Hour Plot End 00:00_11/10/2011

— S011534001	HILWARD MORGAN	111.00	Line	Bore Level ft-NGVD29	B
— S092307001	USGS-Melrose	111.00	Line	Bore Level ft-NGVD29	B
— S141429001	Rosewood Tower	111.00	Line	Bore Level ft-NGVD29	J

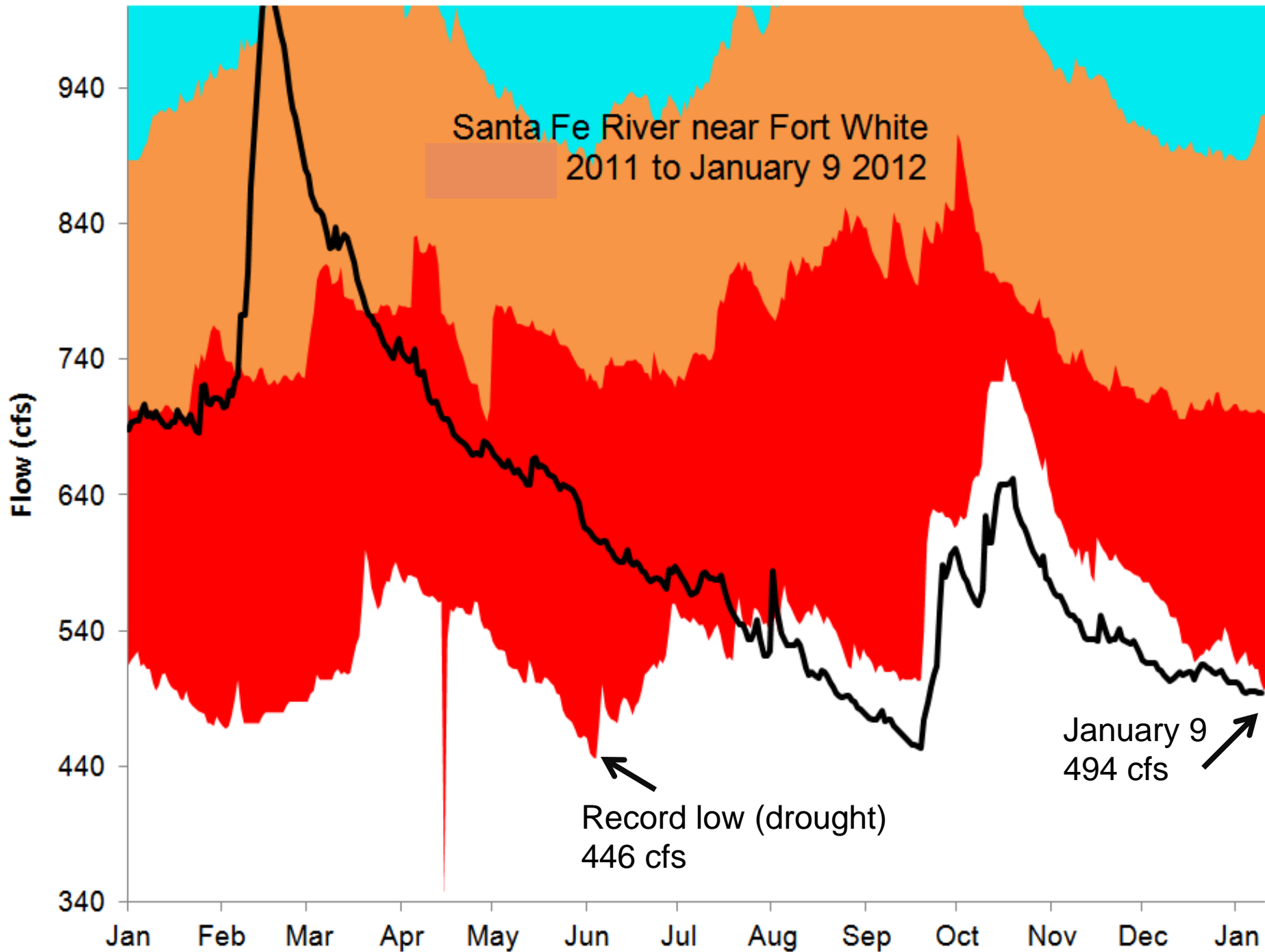




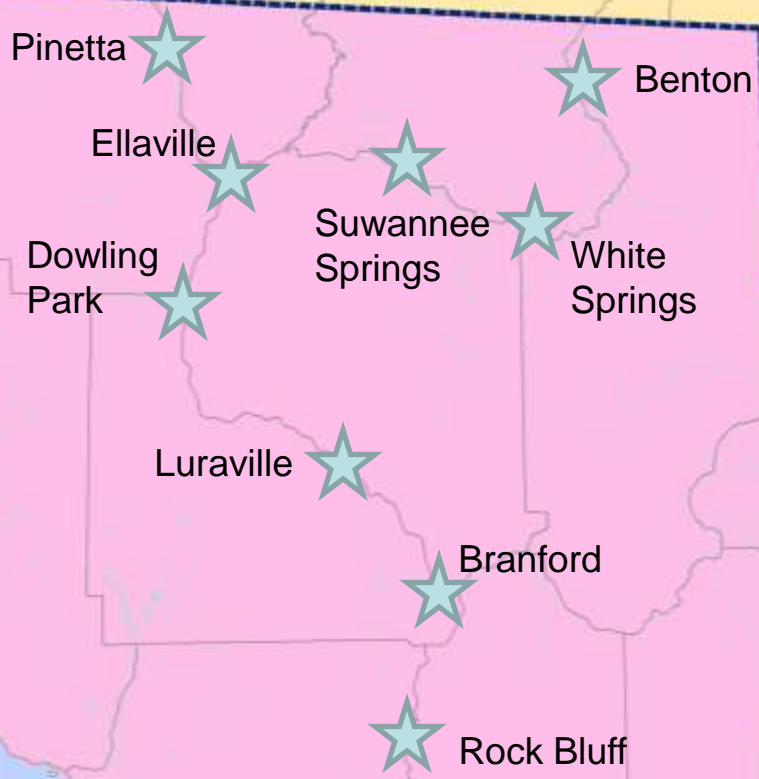
Streamflow Jan. 9th

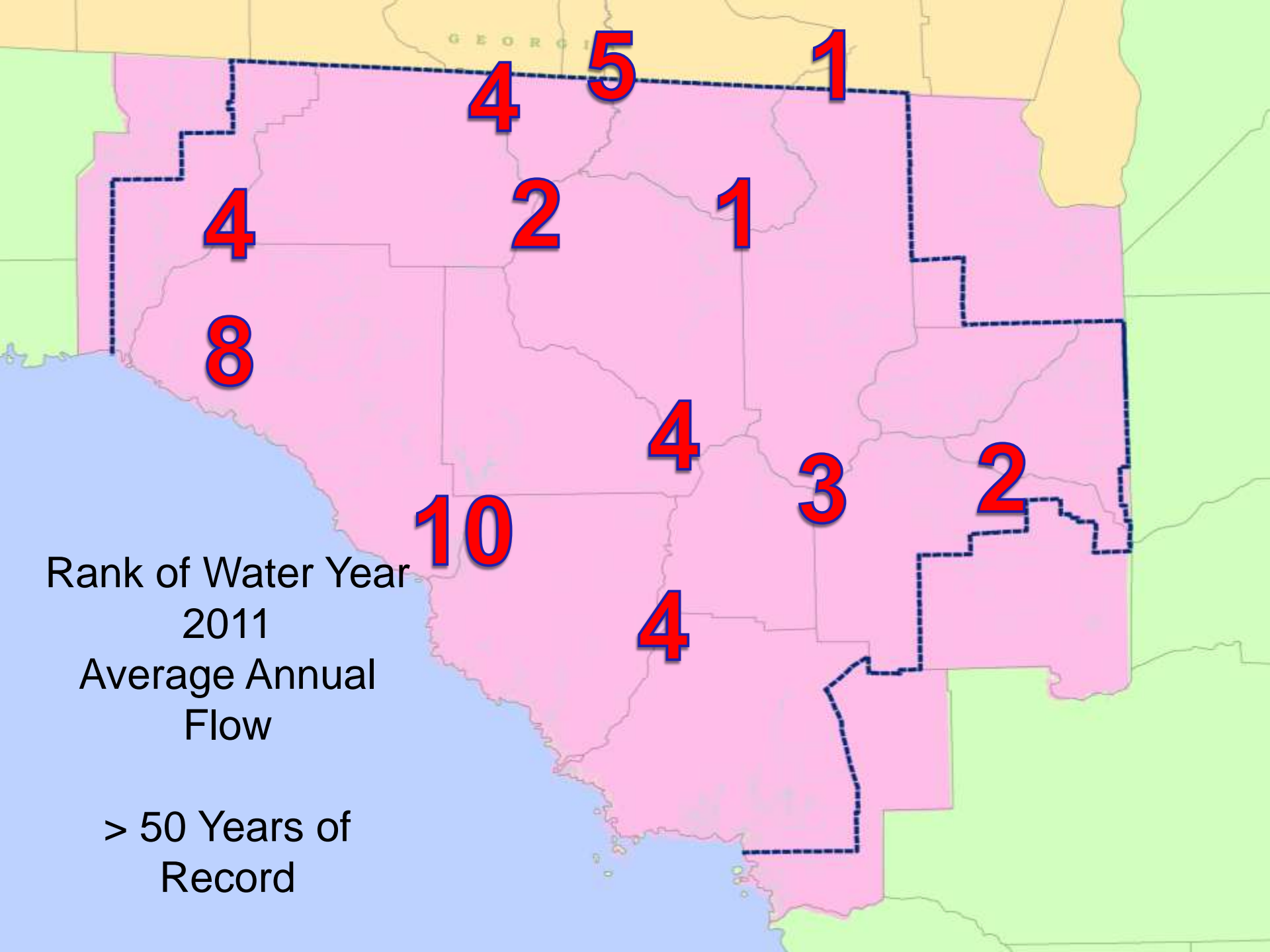
Based on Daily Data

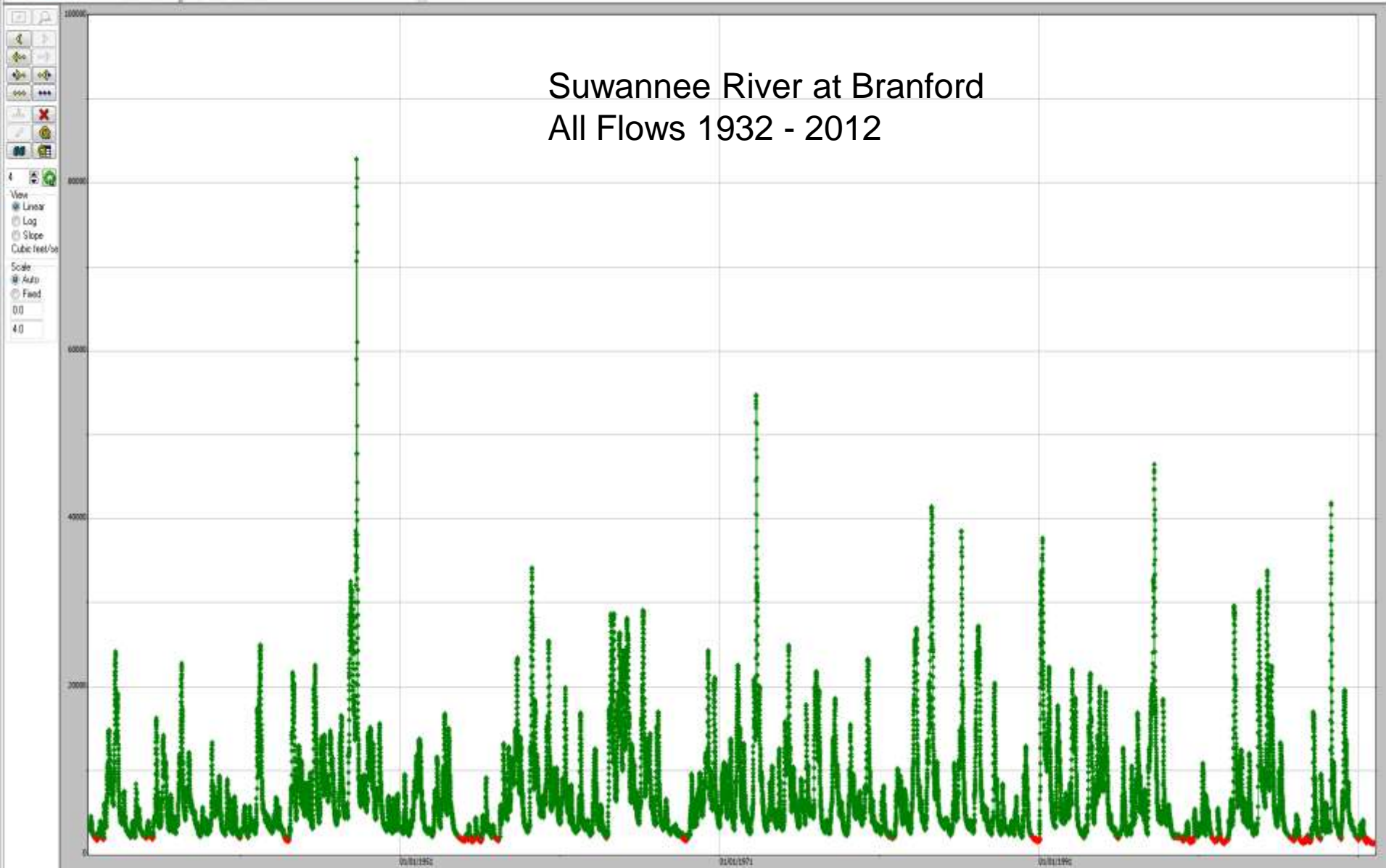
- Normal
- 10 to 25th
- Less than 10th Percentile



Record Low
River
Measurements
In
2011



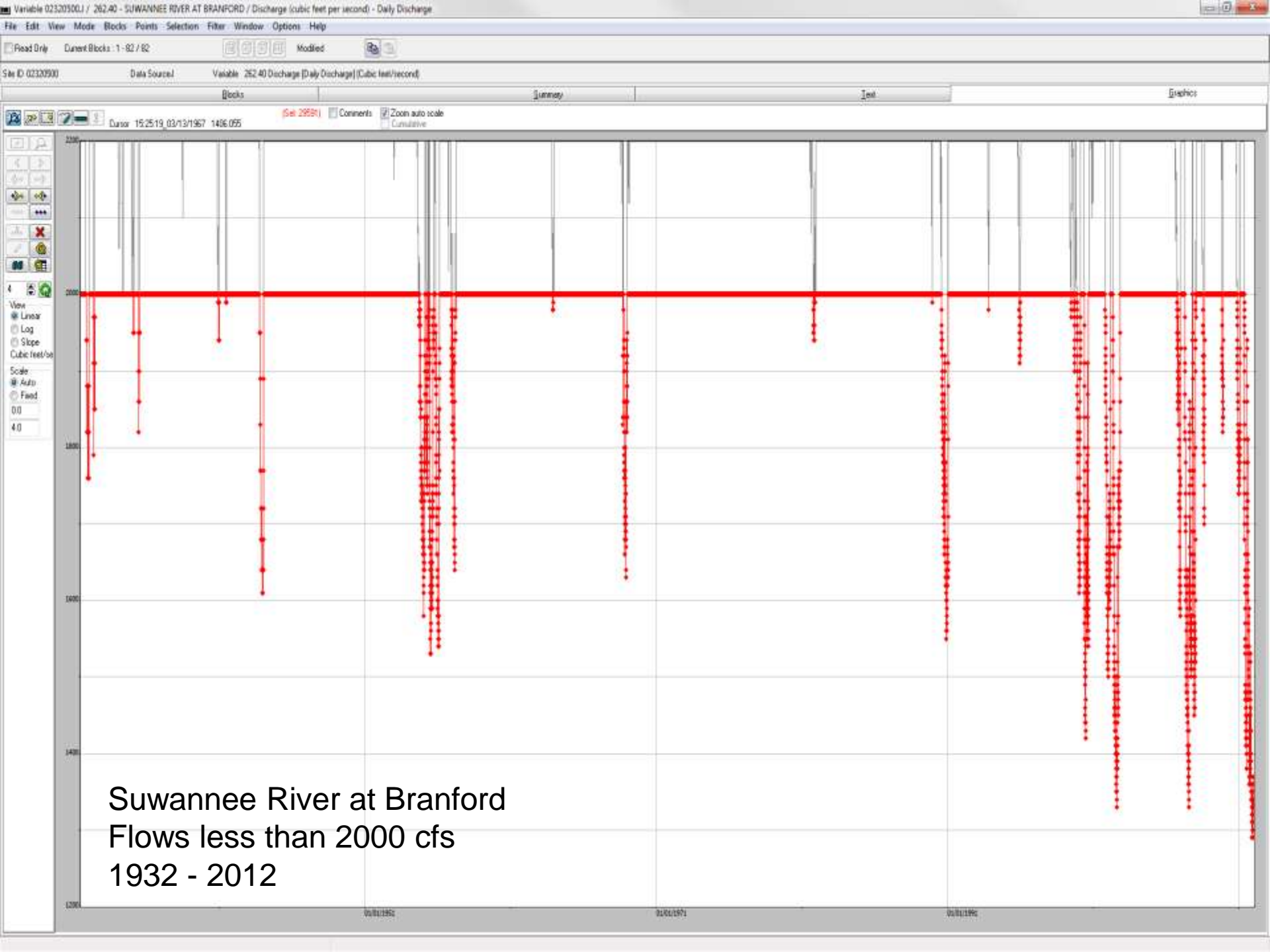




Suwannee River at Branford All Flows 1932 - 2012

View
Linear
Log
Slope
Cubic feet/second

Scale
Auto
Fixed
0.0
4.0



Suwannee River at Branford
Flows less than 2000 cfs
1932 - 2012



Bottom Line

- Record low flows and levels
- No improvement in December
- La Niña Advisory in effect
- Best chance of recharge still ahead.