

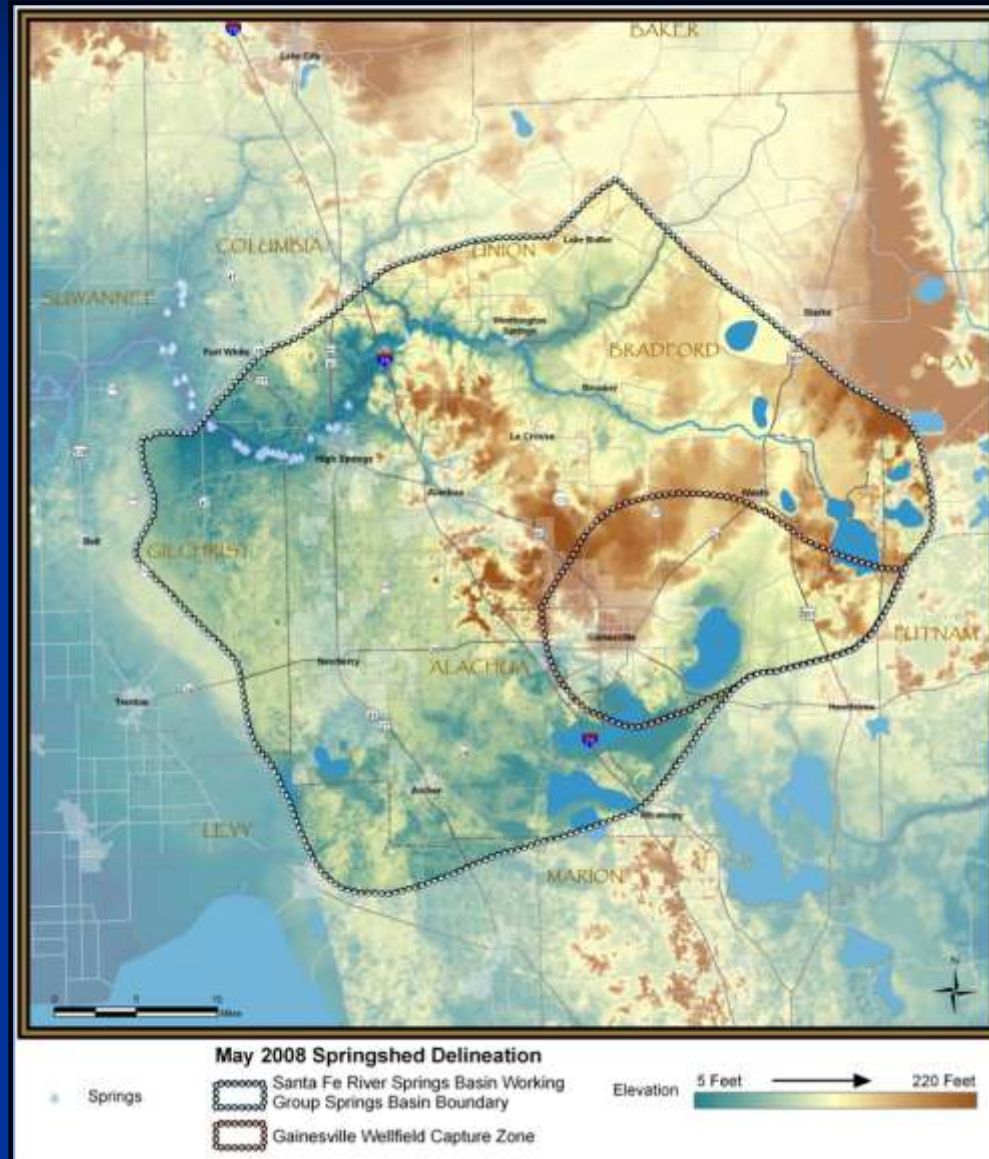
# Framing The Issue

**WHY AGRICULTURAL  
PRACTICES ARE  
CRITICAL TO SPRINGS  
PROTECTION**

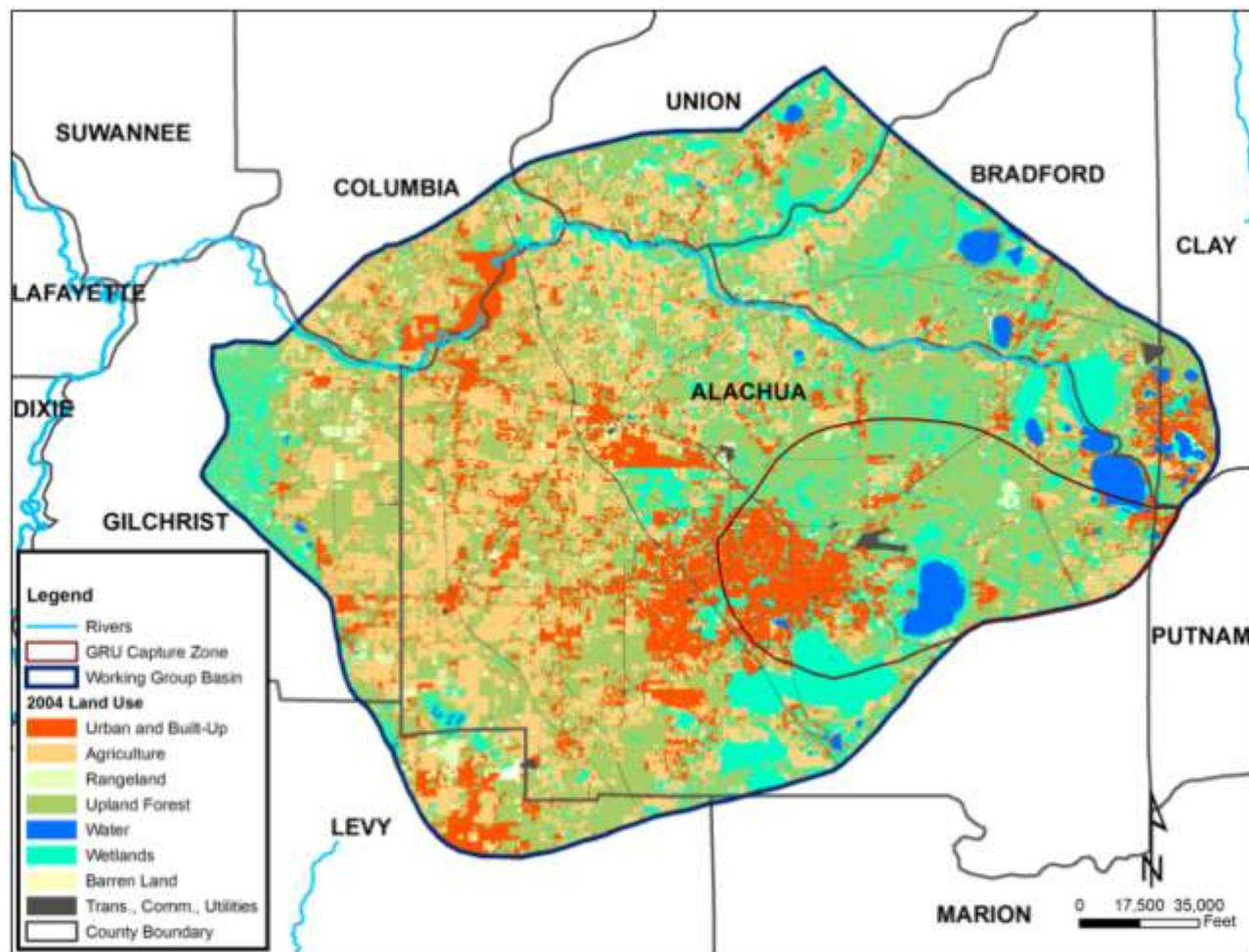
**in the Suwannee River Basin**

# Springshed for Springs of the Santa Fe River Basin

1,114  
square  
miles



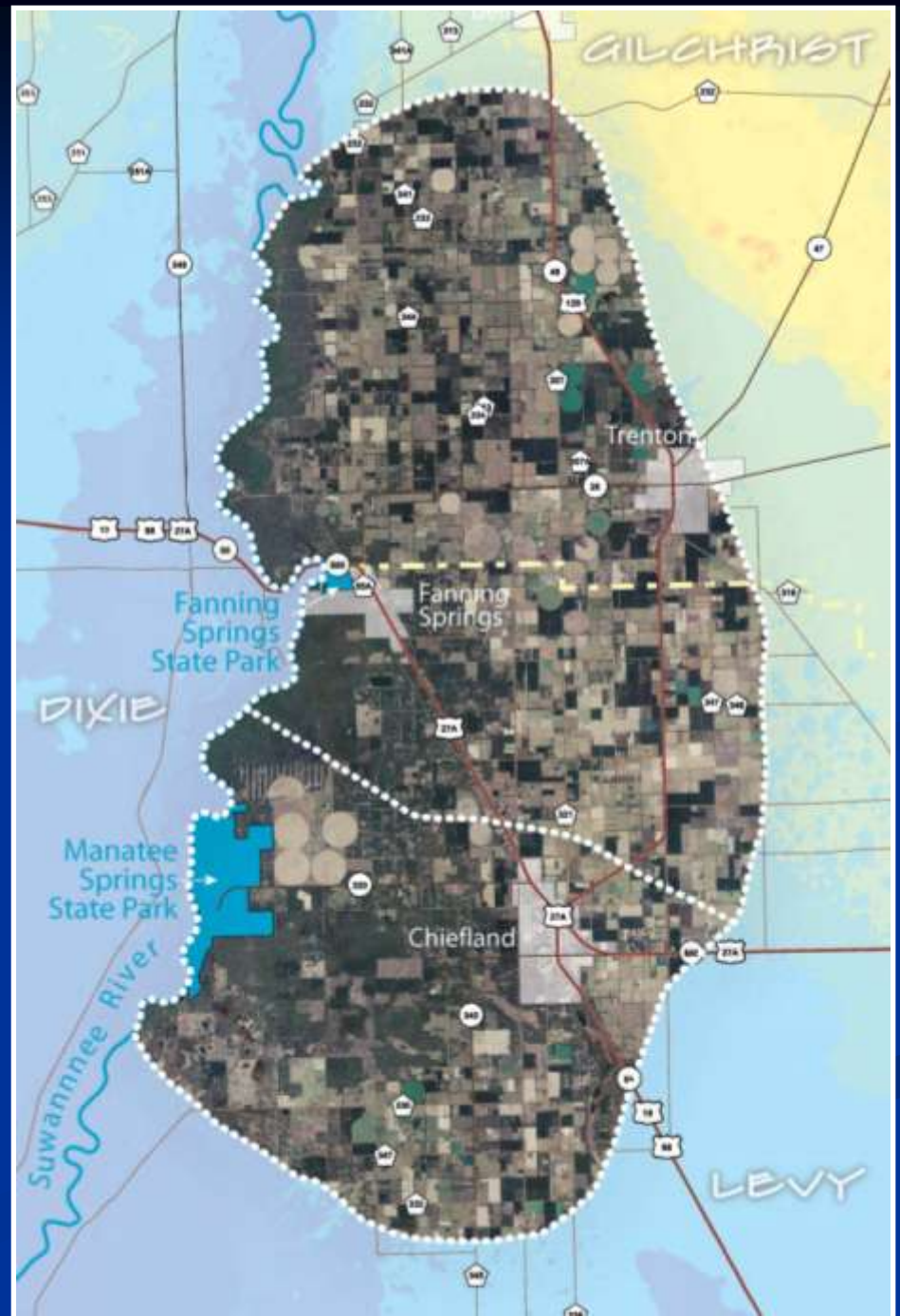
# Land Use in Springshed for Springs of the Santa Fe River Basin



**Agriculture**  
(light yellow)  
~ 26% of basin

# Springshed for Fanning & Manatee Springs

221 square miles



# Land Use in the Fanning & Manatee Springshed

Mostly agriculture  
(green areas)



## Features

### Land Use Class

- Agriculture
- Barren Land
- Extractive

- Infrastructure
- Mines
- Non-Forested Uplands

- Open Water
- Upland Forest
- Wetlands

## Land Use

### Elevation Value

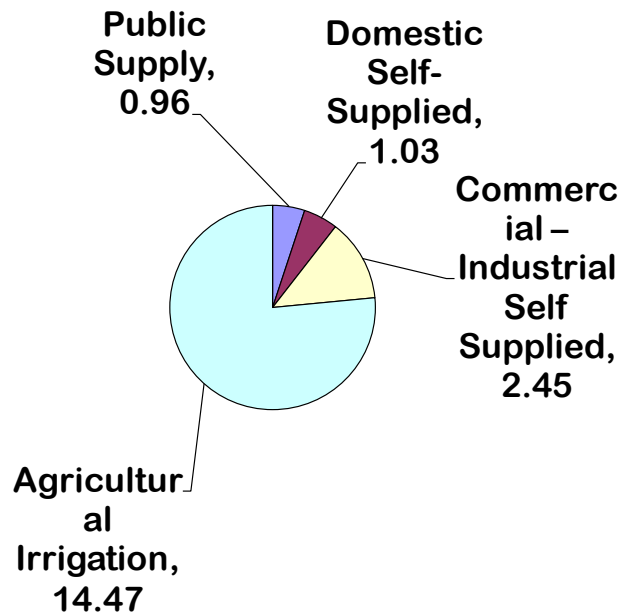
- High: 255
- Low: 0



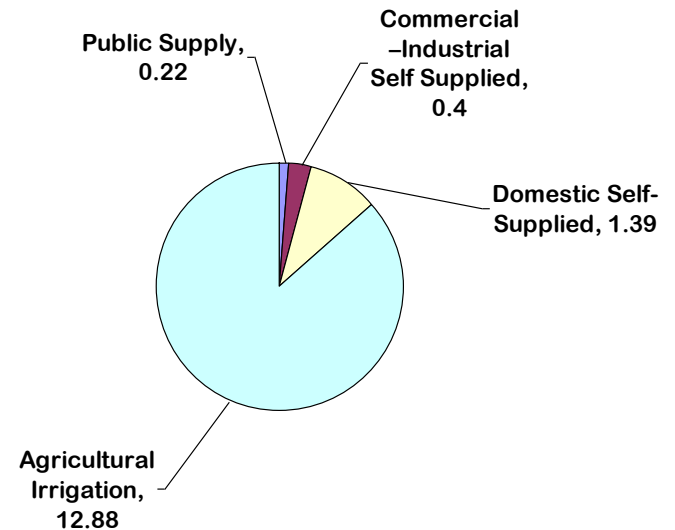
# Agriculture Uses Most Groundwater in The Fanning & Manatee Springshed

## 2000-2005 (USGS summary)

**LEVY COUNTY**  
(million gallons per day)



**GILCHRIST COUNTY**  
(millions gallons per day)



**How much water is  
1 Million Gallons?**



**51 feet on  
each side**

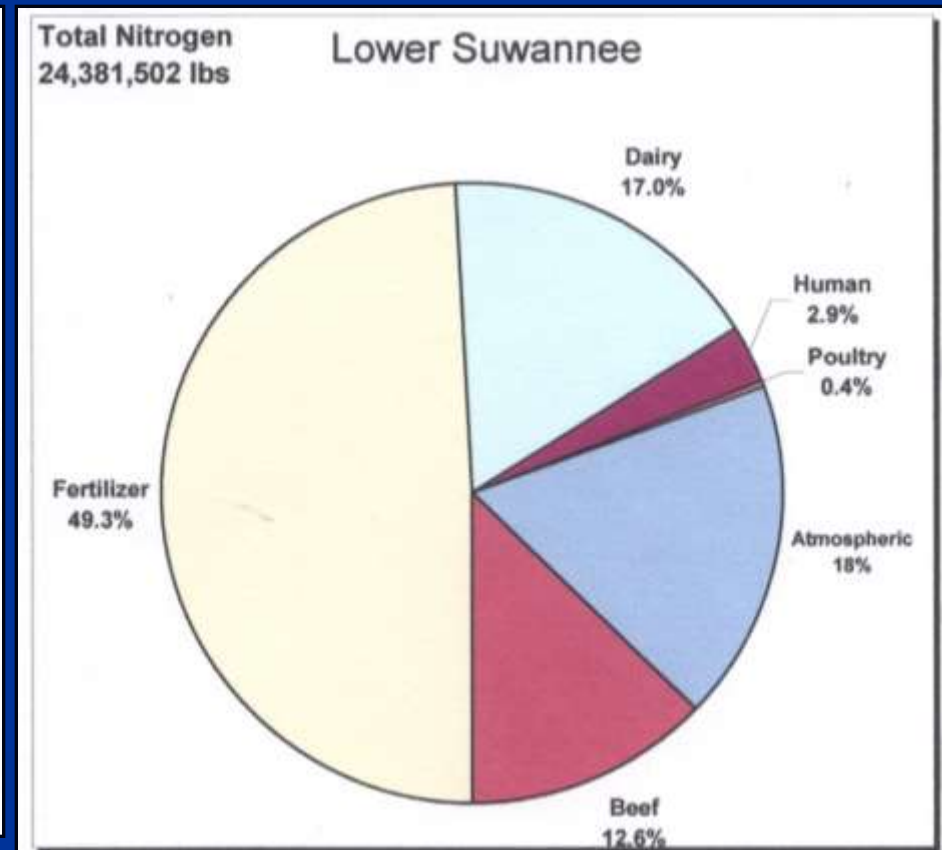
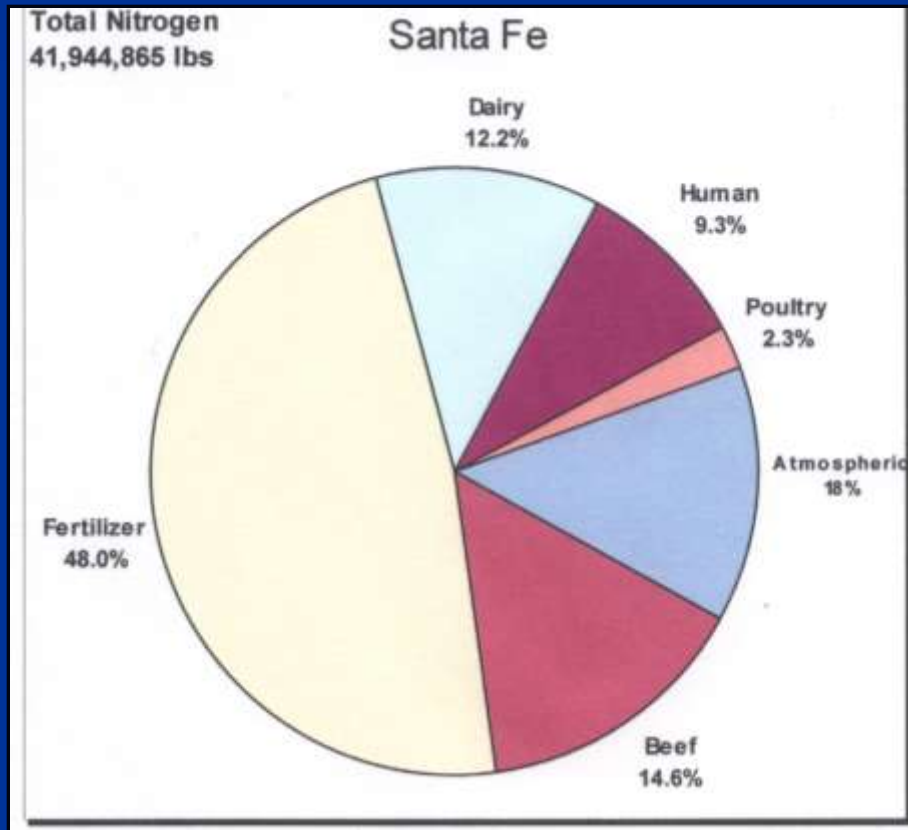
# Agriculture Uses Groundwater in The Santa Fe River Springshed

**US Geologic Survey 2005 Water Use Data  
(Million Gallons per Day)**

<b>County</b>	<b>Total Groundwater Withdrawal</b>	<b>Agriculture Groundwater Withdrawal</b>	<b>% Agriculture</b>
Alachua	59.89	23.05	38%
Bradford	7.8	0.99	13%
Columbia	12.28	4.4	36%
Gilchrist	14.6	12.59	86%
Union	3.63	1.69	47%

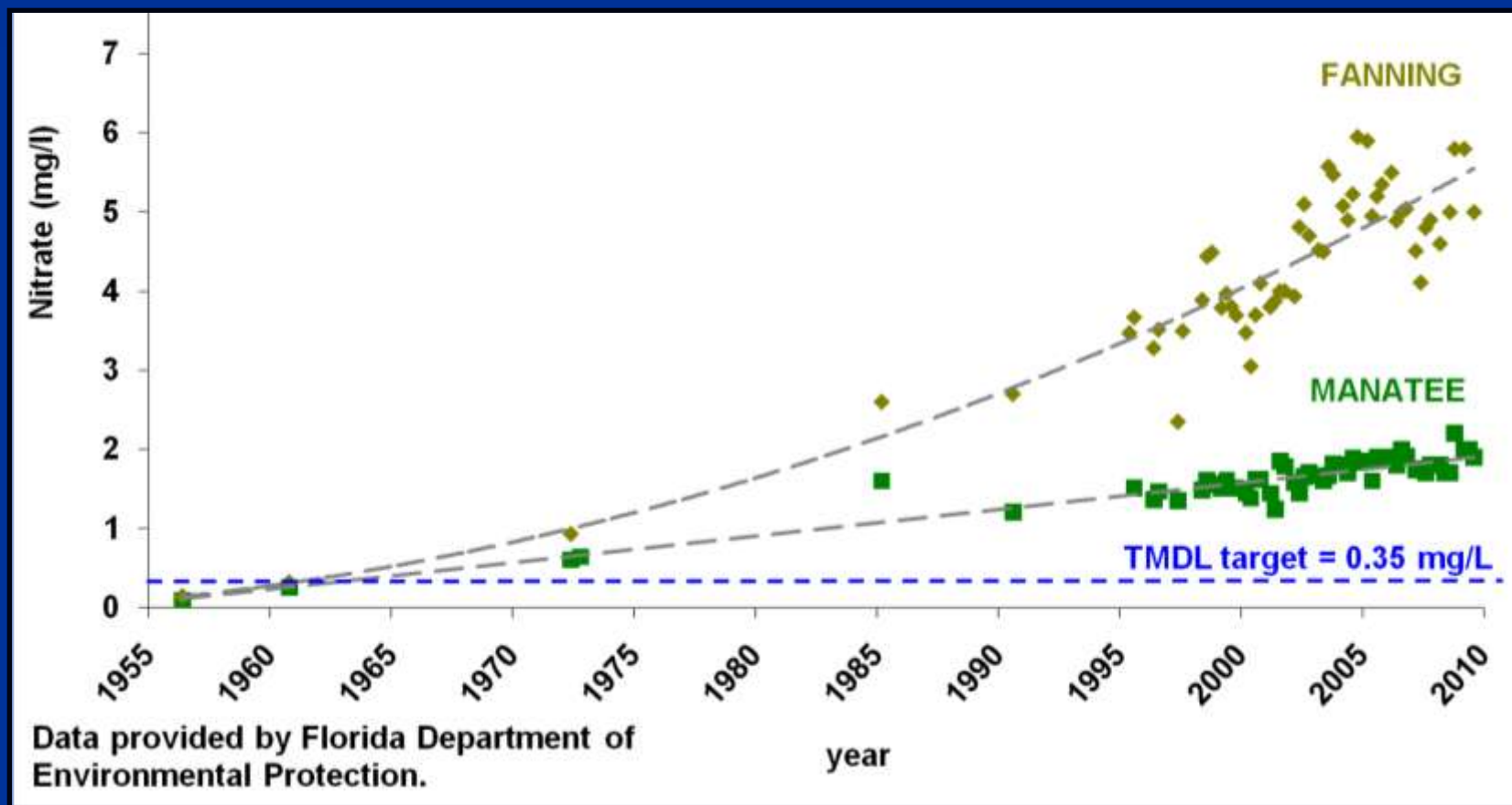
# Largest sources of nitrogen in the spring-fed Lower Suwannee and Santa Fe Rivers

## FERTILIZER, DAIRY, BEEF





**Florida Geological Survey:** if nitrogen input to groundwater were to be substantially reduced in the Fanning & Manatee springsheds, a reduction in nitrate loading in the springs would probably be seen within 2 – 5 years.

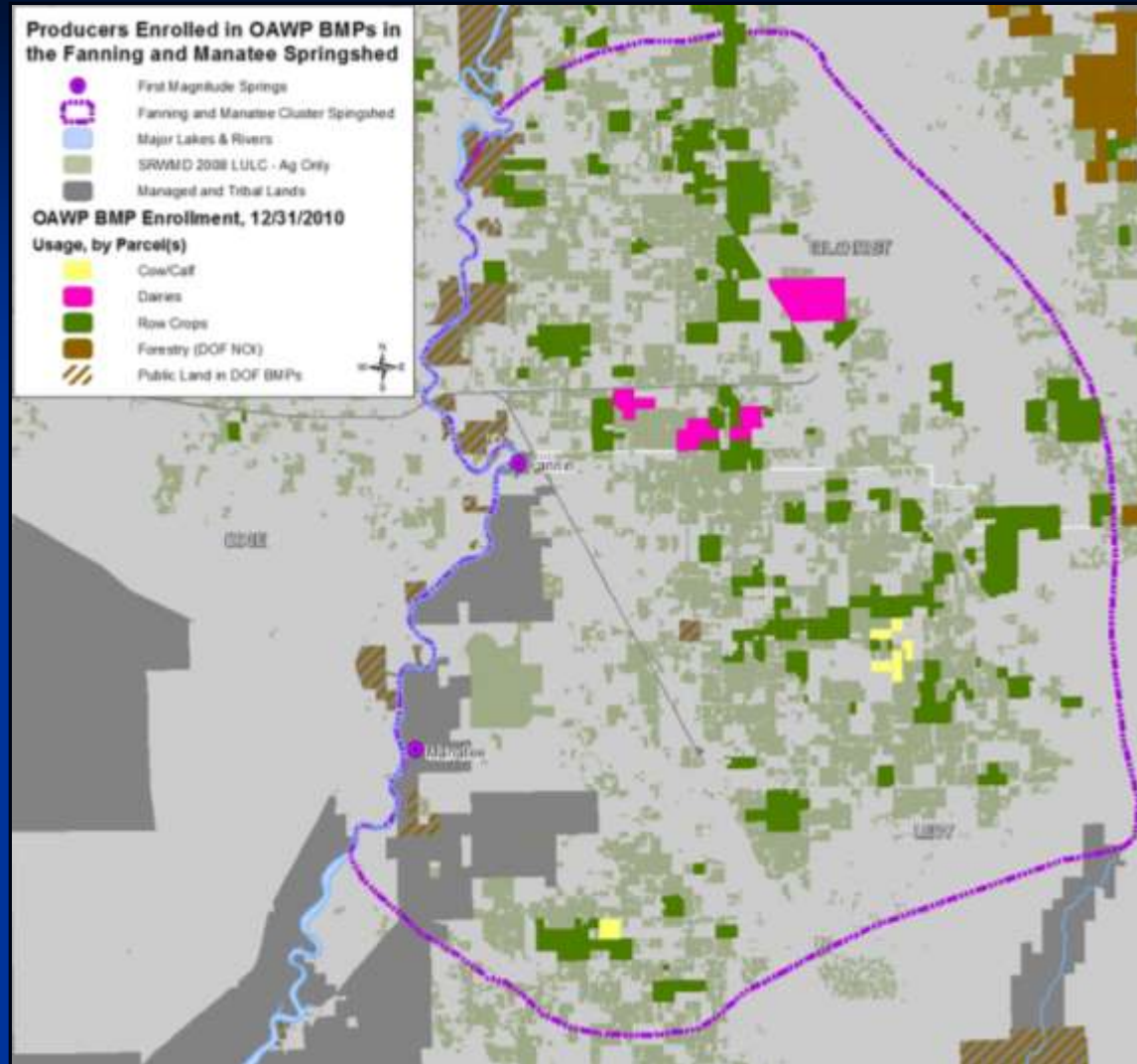




Formed in 1999 to provide research-based solutions that protect and conserve water resources within the Suwannee River Water Management District by emphasizing implementation of voluntary or incentive-based programs.

# Fanning & Manatee Springshed

- about 68,944 acres in agriculture
- 32% of agricultural acreage enrolled in BMP program (21,958 acres on 52 farms)



# Santa Fe River Basin

- **43,320 acres enrolled in BMP program**
- **~20% of agricultural acreage enrolled in BMP program**