

**Fanning & Manatee Springs Working Group
with the
Santa Fe Springs Working Group**

SPECIAL MEETING - ALL ARE WELCOME

FOLLOW THE LEADERS:

Planning Land Use to Protect Groundwater That Flows to Springs

Learn how several Florida counties are leading the way in protecting groundwater flowing to springs in their counties. These local governments are vanguards in successfully using land-use planning and associated ordinances and programs to safeguard flow of ample clean water to their valuable springs.

This is a publicly noticed meeting as required by Florida's "Government in the Sunshine" law.

**Thursday, November 18, 2010 9:30–4:00 with lunch break
At Fanning Springs City Hall 17651 NW 90 Court (directions below)**

9:30 Welcome

Stacie Greco – Coordinator*, Santa Fe Springs Working Group

Carol Lippincott – Coordinator**, Fanning & Manatee Springs Working Group

9:50 Introductions including Invited Local Government Officials

10:10 Statewide Overview of Comprehensive Planning for Groundwater Protection in Springsheds, featuring Wakulla Spring

Craig Diamond - State Planning Administrator, Florida Department of Community Affairs

10:55 Marion County: Land-Use Planning for Spring Protection

Bill Kinser - Planning Manager, Marion County Planning Division

11:25 Citrus County: Land-Use Planning for Spring Protection

Kevin Smith - Director, Citrus County Planning Division

11:55 Lunch Break (bring your own brown bag or go to a nearby restaurant)

1:10 Alachua County: Land-Use Planning for Spring Protection

Mike Castine - Planner, Alachua County Comprehensive Planning Division

1:40 Lake County: Land-Use Planning for Spring Protection

Brian Sheahan - Director, Lake County Planning Division

2:10 Break

2:25 PANEL DISCUSSION WITH THE SPEAKERS – moderated by Carol Lippincott

3:40 Land-Use Planning to Restore Water Quality in the Suwannee and Santa Fe Rivers

Terry Hansen - Watershed Planning and Coordination, Florida Department of Environmental Protection

3:50 Wrap Up

4:00 Adjourn

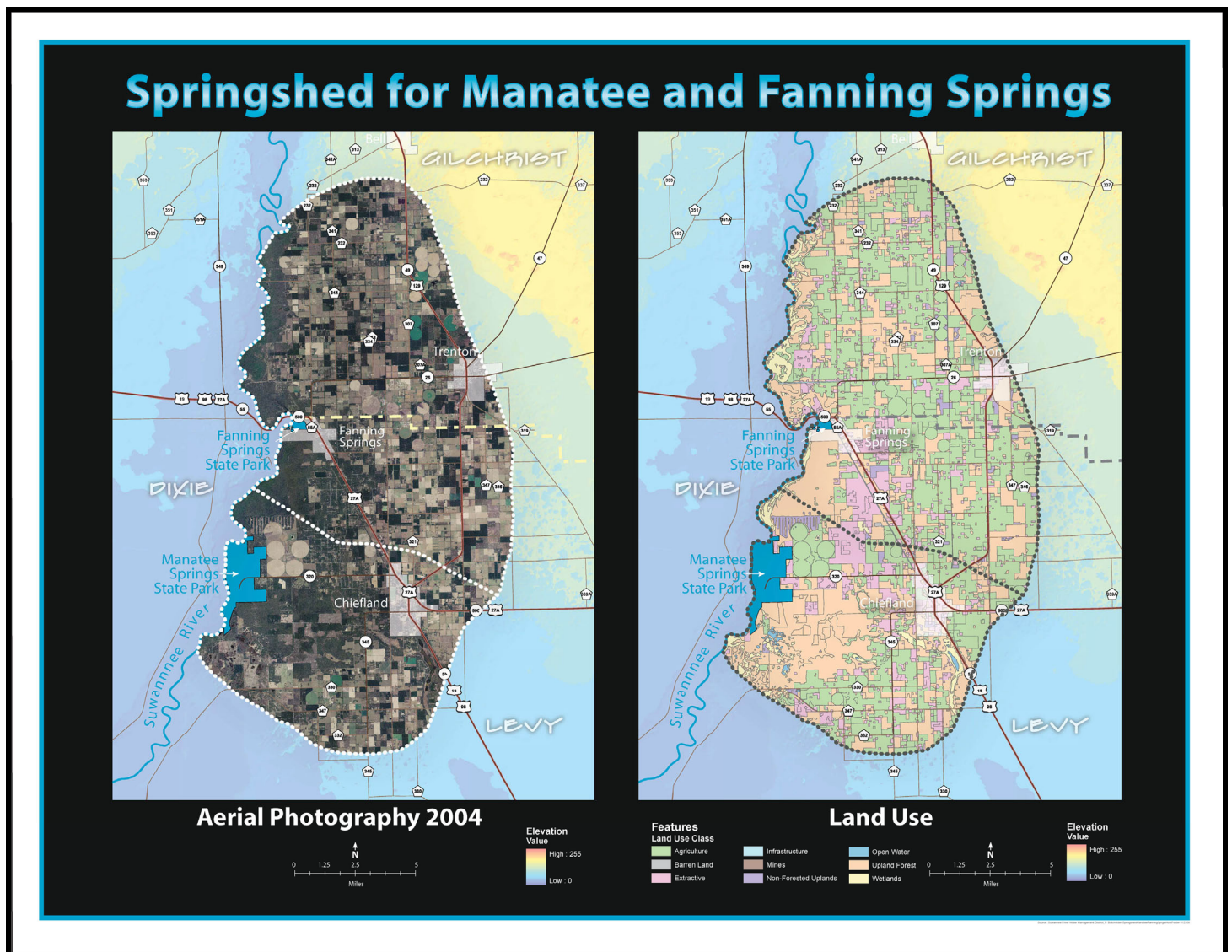
Refreshments provided by Annette and Mark Long.

Directions: From Highway 19/98 just east of the agricultural inspection station, turn south onto NW 90 Court and go ½ mile. Link to map:

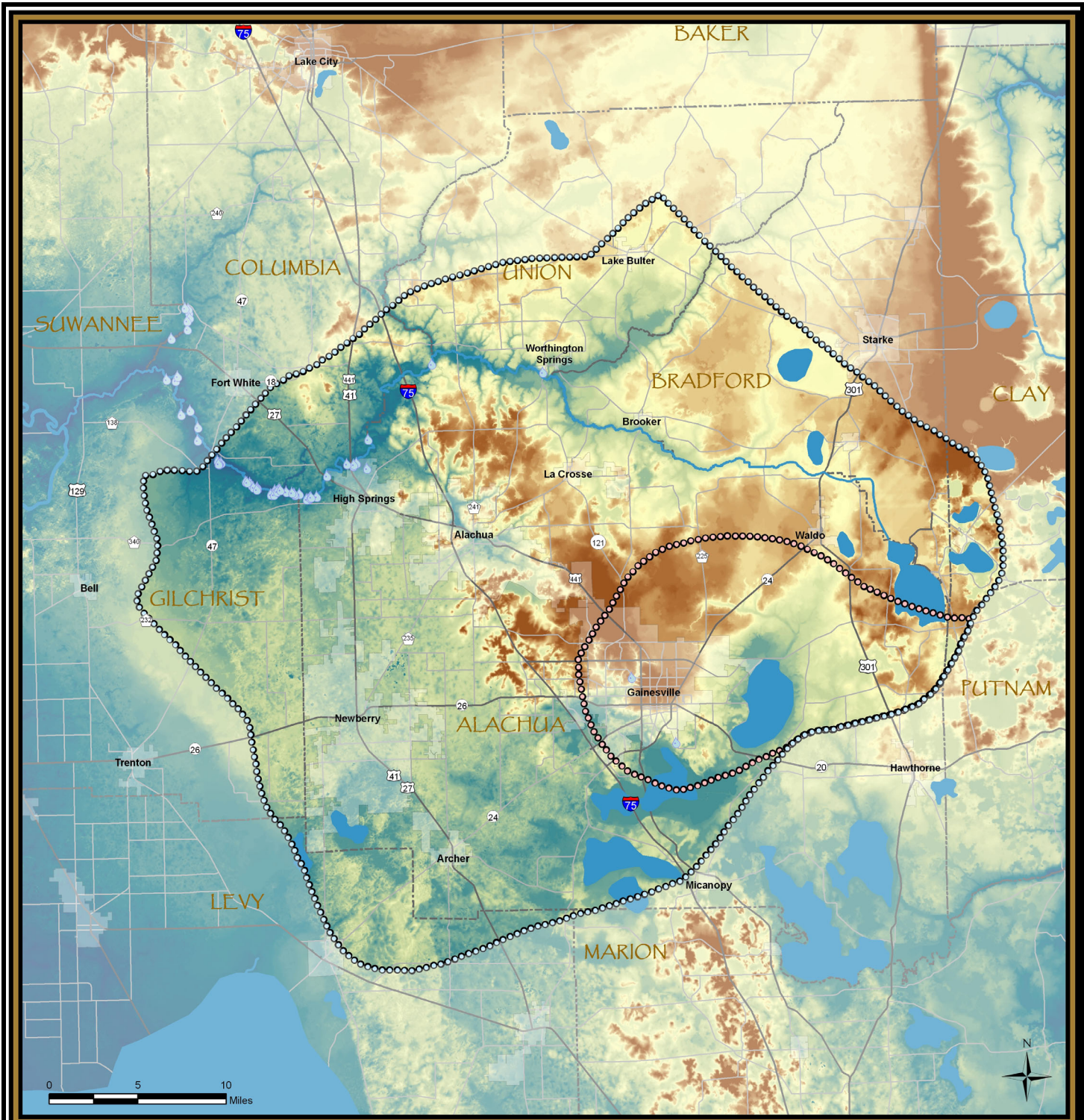
<http://www.mapquest.com/maps?city=Fanning+Springs&state=FL&address=17651+NW+90th+Ct&zipcode=32693-9212&country=US&latitude=29.586844&longitude=-82.925415&geocode=ADDRESS>

* **Coordination** of the Santa Fe Springs Working Group is provided by the Alachua County Environmental Protection Department. For information go to www.SantaFeRiverSprings.com or contact Stacie Greco at SGreco@AlachuaCounty.US or (352) 264-6829.

** **Coordination** of the Fanning and Manatee Springs Working Group is funded through the Wildlife Legacy Initiative of the Florida Fish and Wildlife Conservation Commission, with a matching contribution provided by the Springs Initiative of the Florida Department of Environmental Protection. For information go to <http://share2.myfwc.com/spring/default.aspx> or contact Carol Lippincott at Carol_Lippincott@cox.net or (352) 377-8693.





“Springshed” for Fanning and Manatee Springs, where most of the spring water comes from most of the time.



May 2008 Springshed Delineation

Spring

-  Santa Fe River Springs Basin Working Group Springs Basin Boundary
-  Gainesville Wellfield Capture Zone

Elevation  5 Feet  220 Feet

“Springshed” for the springs of the Santa Fe River, where most of the spring water comes from most of the time.