

SPRINGS PROTECTION

CITRUS COUNTY
COMPREHENSIVE PLAN





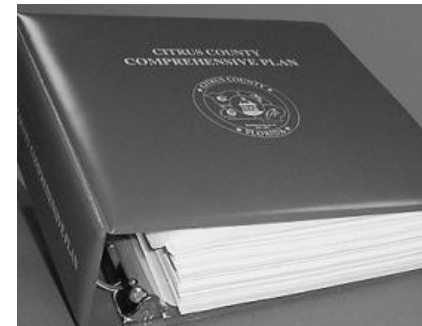
Kevin A. Smith, AICP
Director
Planning Division

We are located at:
Lecanto Government Building
3600 W. Sovereign Path, Suite 140
Lecanto, FL 34461

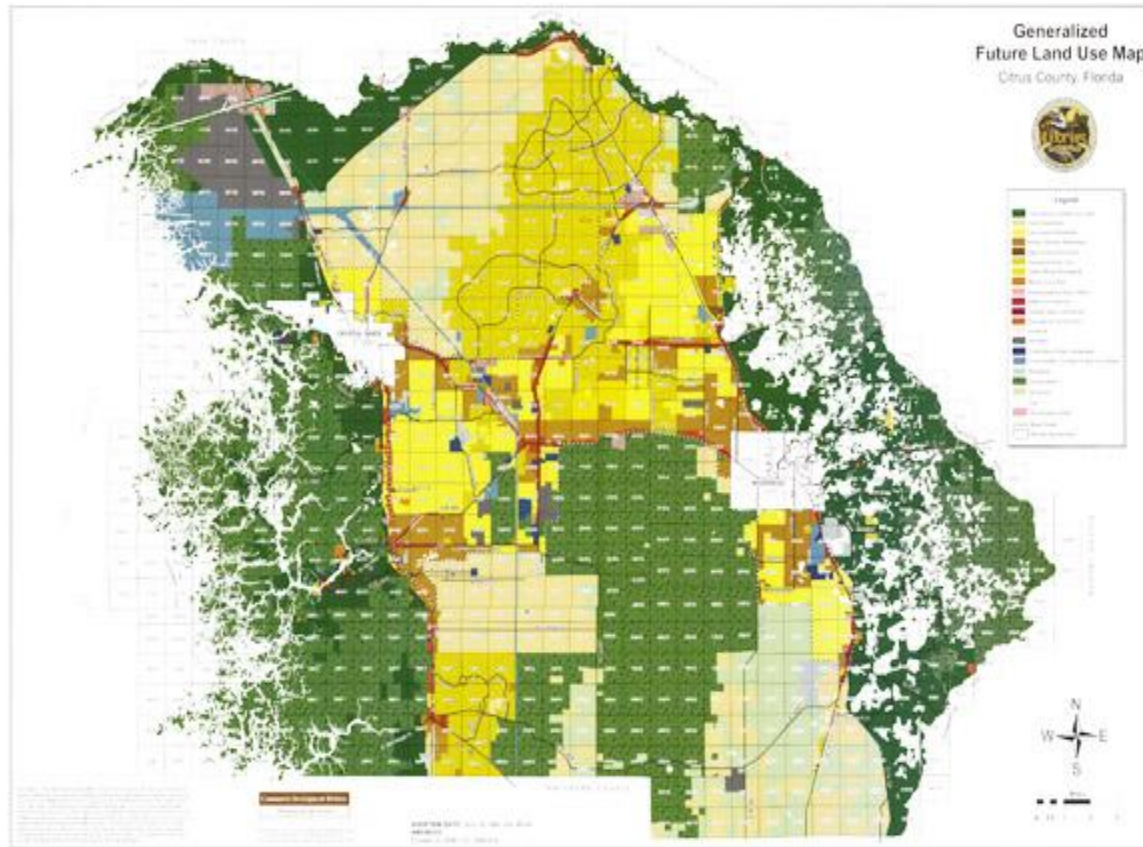
Kevin.Smith@bocc.citrus.fl.us
(352) 527-5242

Comprehensive Plan

- ❑ Required by the Growth Management Act (Florida Statutes 163) for all local governments
- ❑ 16 Elements
- ❑ Future Land Use Map
- ❑ Basis for local land development regulation
- ❑ Public participation process



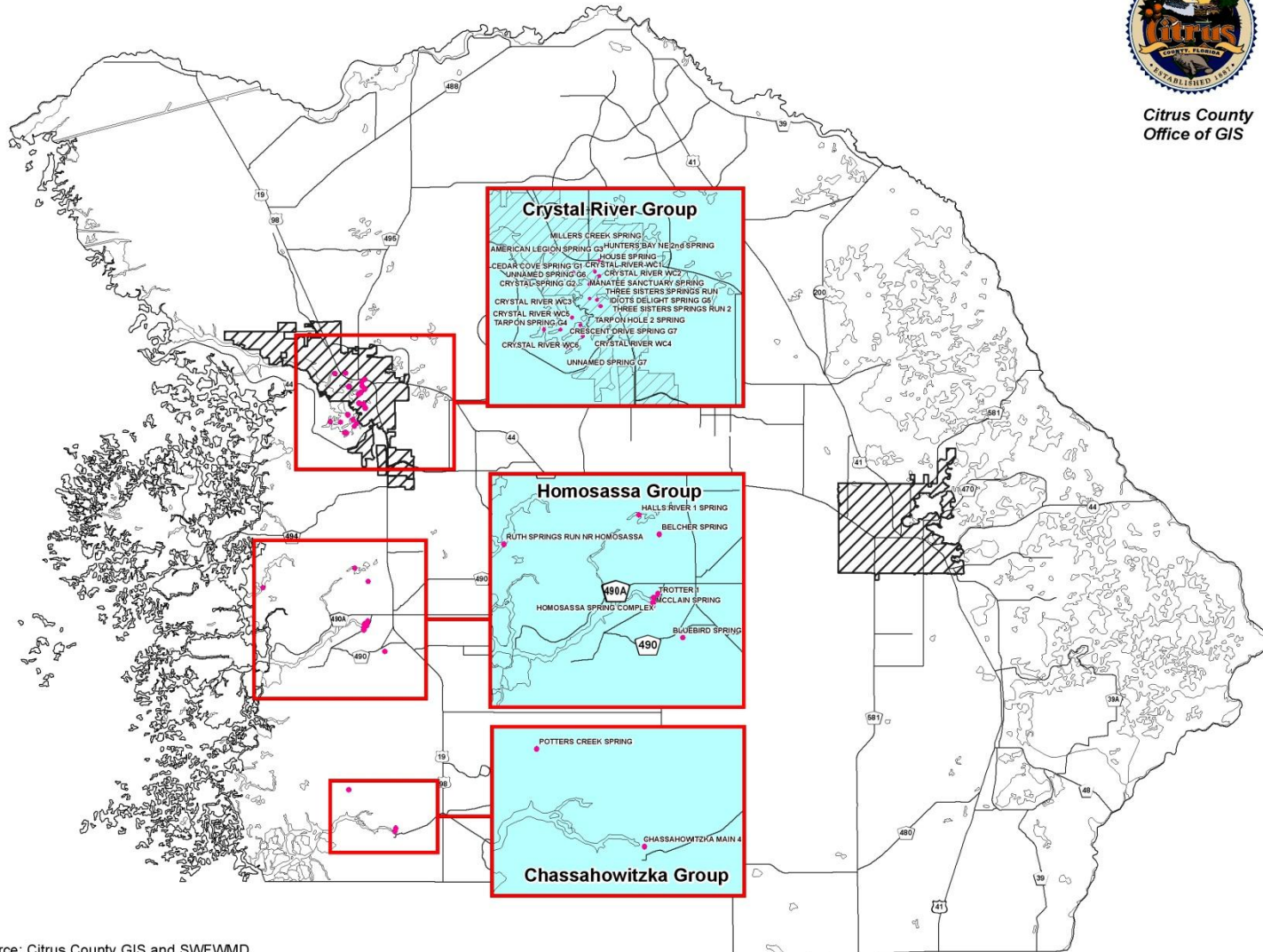
Future Land Use Map



Citrus County Springs



Citrus County
Office of GIS



Source: Citrus County GIS and SWFWMD
Date: November 5, 2010

Chronology

- *1989 - Comp Plan Adopted, environmentally sensitive areas defined*
 - Low Intensity Coastal and Lakes (CL) district established on Future Land Use Map.
 - Maximum residential density of one unit per 20 acres.
 - Policies adopted for buffers and setbacks in Land Development Code.



Chronology

- 2004 - Evaluation and Appraisal Report – Springs Protection Issue #1
- 2006 – Major Update to Conservation Element
- 2007 – Springs Protection amendment
- 2008 – Springs Protection Remedial Amendment



Chronology

- 2010 – Three Sisters Springs purchased.
- 2010 – Landscape Ordinance proposed.

Work Program

- *Watershed Management Plan*
 - Includes Digital Terrain Models and Hydrologic Data
 - Southwest Florida Water Management System's Comprehensive Watershed Management Initiative
 - Enhanced FEMA National Flood Insurance Rate Maps



Comp Plan Policies

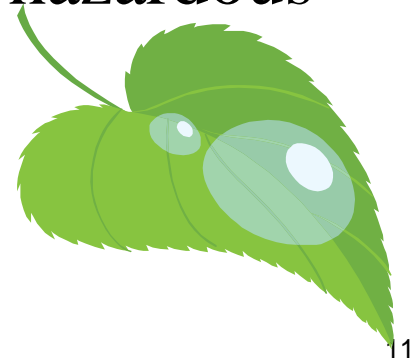
□ *Planning Guidelines*

- Use of interconnected open space/conservation subdivision design plans.
- Clustering of residential development.
- Prohibit land use intensity increase on the Generalized Future Land Use Map within 100 feet of any spring or open sinkhole.



Comp Plan Policies

- *Protection of Springs, Spring Runs and Sinkholes (Objective 3.18)*
 - Erosion control measures.
 - 100 foot buffer of native vegetation during construction near a spring.
 - 500 foot prohibition on uses such as hazardous waster, used oil handler, etc.



Comp Plan Policies

- *Best Management Practices for Nutrient Reduction*
 - Florida Yards and Neighborhood Program.
 - DEP best management for new golf courses.
 - Stormwater Management BMPs
 - Swales
 - Use of vegetated infiltration if possible



Comp Plan Policies

□ *Protection of Karst Features*

- Geotechnical report required on known sinkhole features on all development sites.
- 500 foot setback from all drain fields, chemical storage or solid waste disposal.
- 100 foot setback for all buildings.
- Smaller lots may use an engineer designed system.



Comp Plan Policies

- *Wastewater Disposal*
 - If regional service is available, all development must connect to Advanced Wastewater Treatment (AWT) standards.
 - New subdivisions not on a regional system must use high performance septic tanks.
 - By 2012, existing lots of record must also go to high performance septic tanks.



Landscape Ordinance (proposed)

- *“Citrus County Ordinance for Green Industries Best Management Practices Use on Urban Landscapes”*
 - *Proposed by County Extension Office to address nutrient laden runoff & improper fertilizer application.*
 - *Mandates training & certification for commercial applicators.*





Kevin A. Smith, AICP
Director
Planning Division

Lecanto Government Building
3600 W. Sovereign Path, Suite 140
Lecanto, FL 34461
Telephone (352) 527-5239