

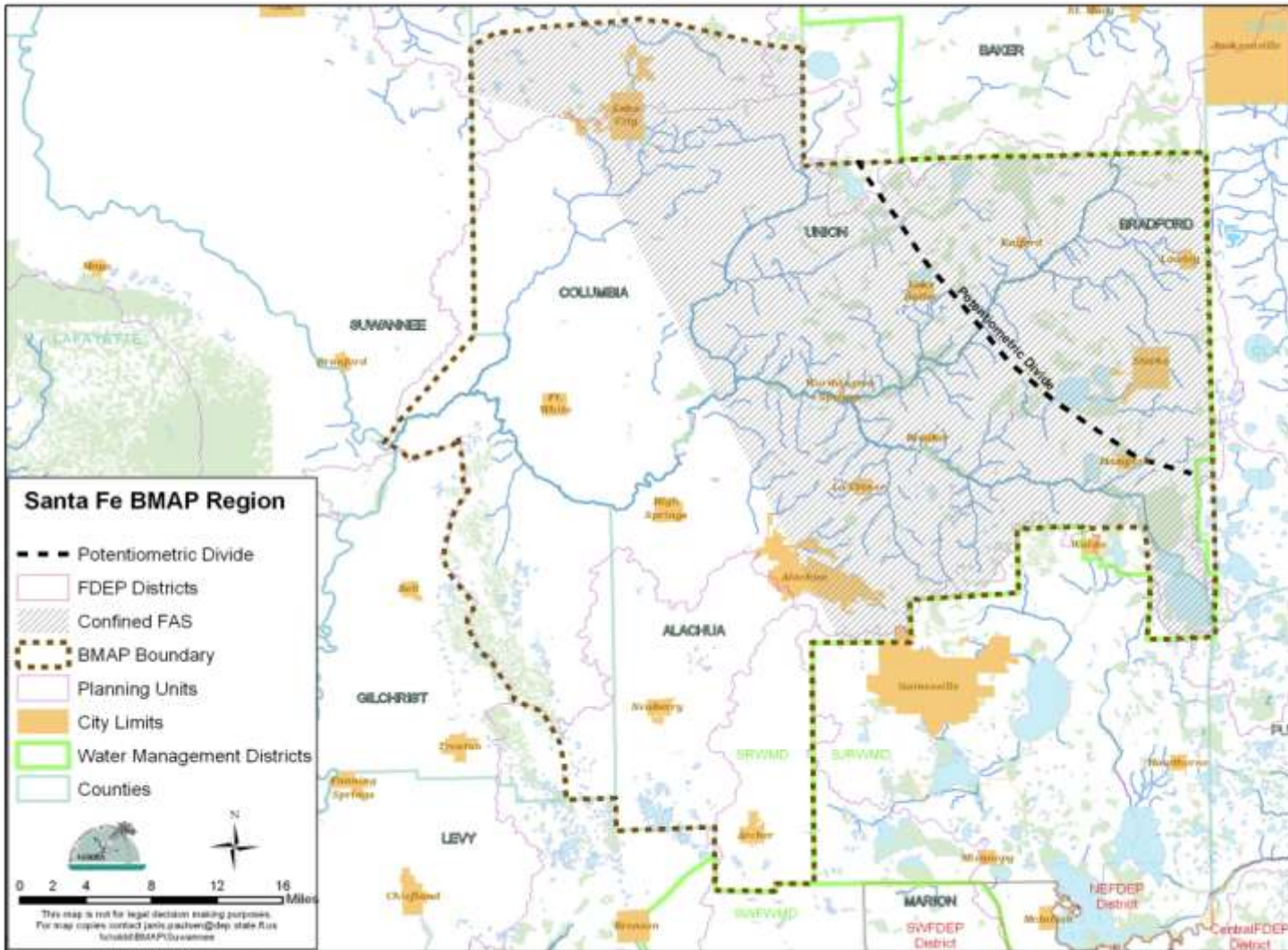
Santa Fe BMAP

Terry Hansen, P.G. FDEP

Location for meeting files

http://publicfiles.dep.state.fl.us/DEAR/BMAP/Santa_Fe
and select appropriate file folder

Santa Fe River BMAP Area



Santa Fe River Basin BMAP Process

- Implement the TMDL for the Suwannee & Santa Fe Rivers.
- Based on implementation of BMPs for nonpoint sources & a determination of sufficiency of effort.
- Phased Approach includes:
 - Agriculture & Silviculture BMPs
 - Urban (non ag) BMPs

Best Management Practices

“Best management practice(s)” means a practice or combination of practices determined by the coordinating agencies, based on research, field-testing, and expert review, to be the most effective and practicable on-location means, including economic and technological considerations, for improving water quality in agricultural and urban discharges.

Meeting Review

- November '09
 - TMDL Review & Overview of BMAP Process
- January '10
 - Meeting Format, BMPs, Technical Approach
- February '10
 - Technical Approach, Projects, Silviculture BMPs
- March '10
 - Aquifer Vulnerability Assessments, Agricultural BMPs
- April '10
 - Agriculture BMPs review, Producer Report, NRCS Conservation Plans, Personal Stormwater Management
- May '10
 - Ordinances, Alachua County example, Urban BMPs

Agriculture BMPs

- Practice that is designed to improve water quality
- Economic and technology based
- Required as stated in adopted legislation



FDACS-OAWP Adopted BMPs

OAWP Adopted BMPs	Rules
Ridge Citrus	<u>5E-1.023</u>
Indian River Citrus	<u>5M-2</u>
Peace River Citrus	<u>5M-5</u>
Gulf Citrus	<u>5M-7</u>
Lake Okeechobee BMPs	<u>5M-3</u>
Florida Container Nurseries	<u>5M-6</u>
Florida Vegetable & Ag Crops	<u>5M-8</u>
Florida Sod	<u>5M-9</u>
Manure Application	<u>5M-10</u>
Florida Cow/Calf Operations	<u>5M-11</u>

Silviculture BMPs

Land Management Guidelines
Designed to Help Forest Landowners
Conduct Forestry Activities Near
Waterbodies and Wetlands in a
Manner that Is Environmentally
Sound.

- FL DOF Website

Silviculture BMPs

- 1) What Silviculture BMPs Are and When They Apply
- 2) What Responsibilities DOF has Concerning Silviculture BMPs
- 3) Silviculture BMPs Are Being Implemented During Forestry Operations
- 4) Florida's Silviculture BMPs Are Effective at Protecting Water Quality
- 5) Silviculture BMP Notice of Intent

Urban BMPs

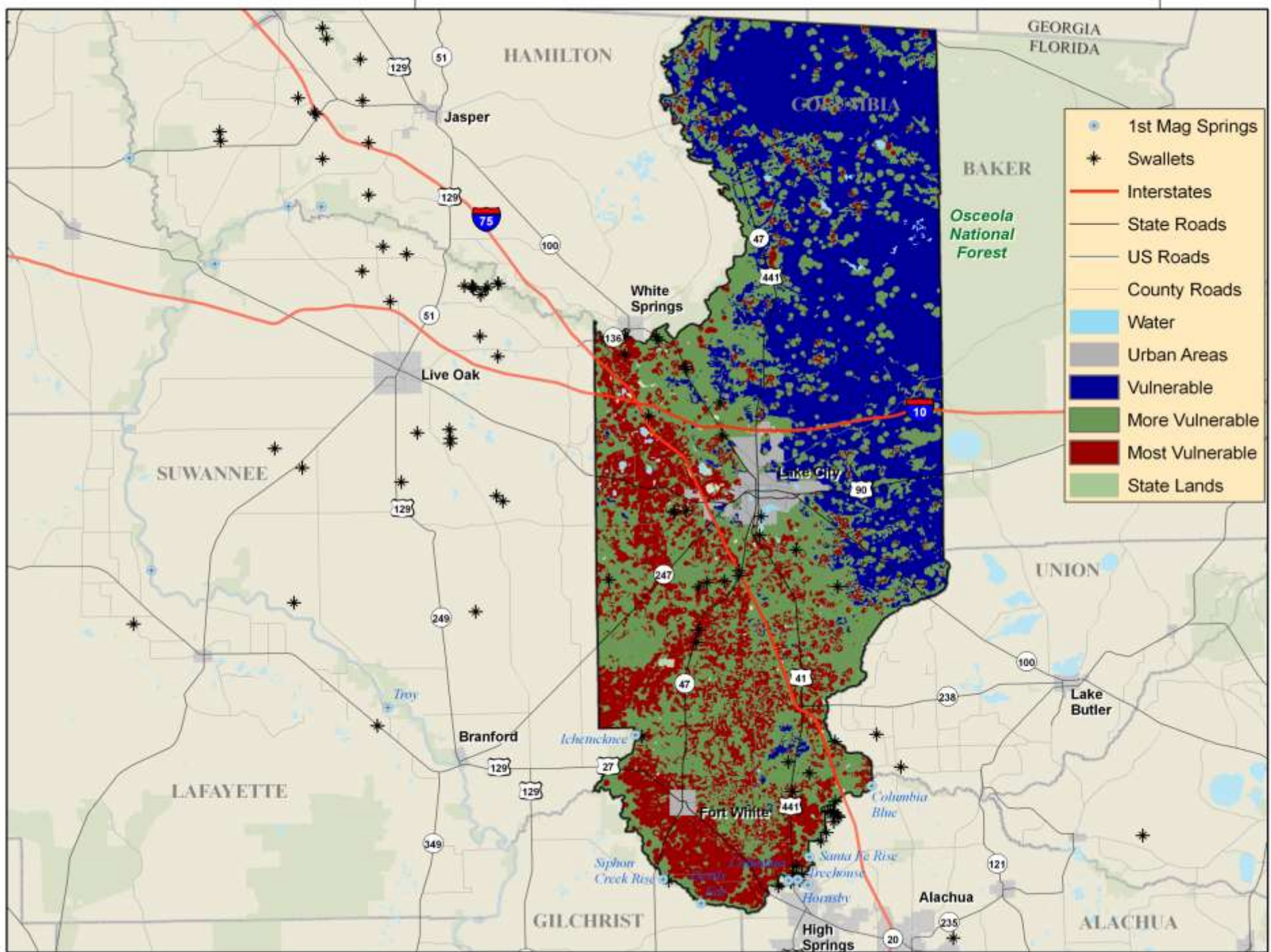
- Stormwater
 - Management & Control
- Ordinances
 - FFY
 - Fertilizer
 - Pet Waste
 - Springshed Protection

Model Ordinances

- Landscape guidelines including fertilizer
- Fertilizer usage (more protective)
- Covenants, Conditions and Restrictions
 - Green Industry BMP
 - Florida Friendly Model Ordinance
 - FYN Handbook

Springshed Protection

- County specific AVA information is good starting point
- Example w/o a vulnerability study
 - Levy County Ordinance
 - Map & ordinance



- 1st Mag Springs
- ✱ Swallets
- Interstates
- State Roads
- US Roads
- County Roads
- Water
- Urban Areas
- Vulnerable
- More Vulnerable
- Most Vulnerable
- State Lands

HAMILTON

GEORGIA
FLORIDA

COLUMBIA

BAKER

*Osceola
National
Forest*

Jasper

White Springs

Live Oak

Lake City

SUWANNEE

UNION

Branford

Fort White

Lake Butler

LAFAYETTE

GILCHRIST

Alachua

ALACHUA

High Springs

Ichemucknee

Columbia Blue

Syphon Creek Rise

Santa Fe Rise

Orchouse

Hornshy

Next Steps

- BMAP Development & Implementation
 - BMP discussions with Local Gov'ts
 - BMAP Adoption by DEP Secretary

Questions?

