

Santa Fe BMAP

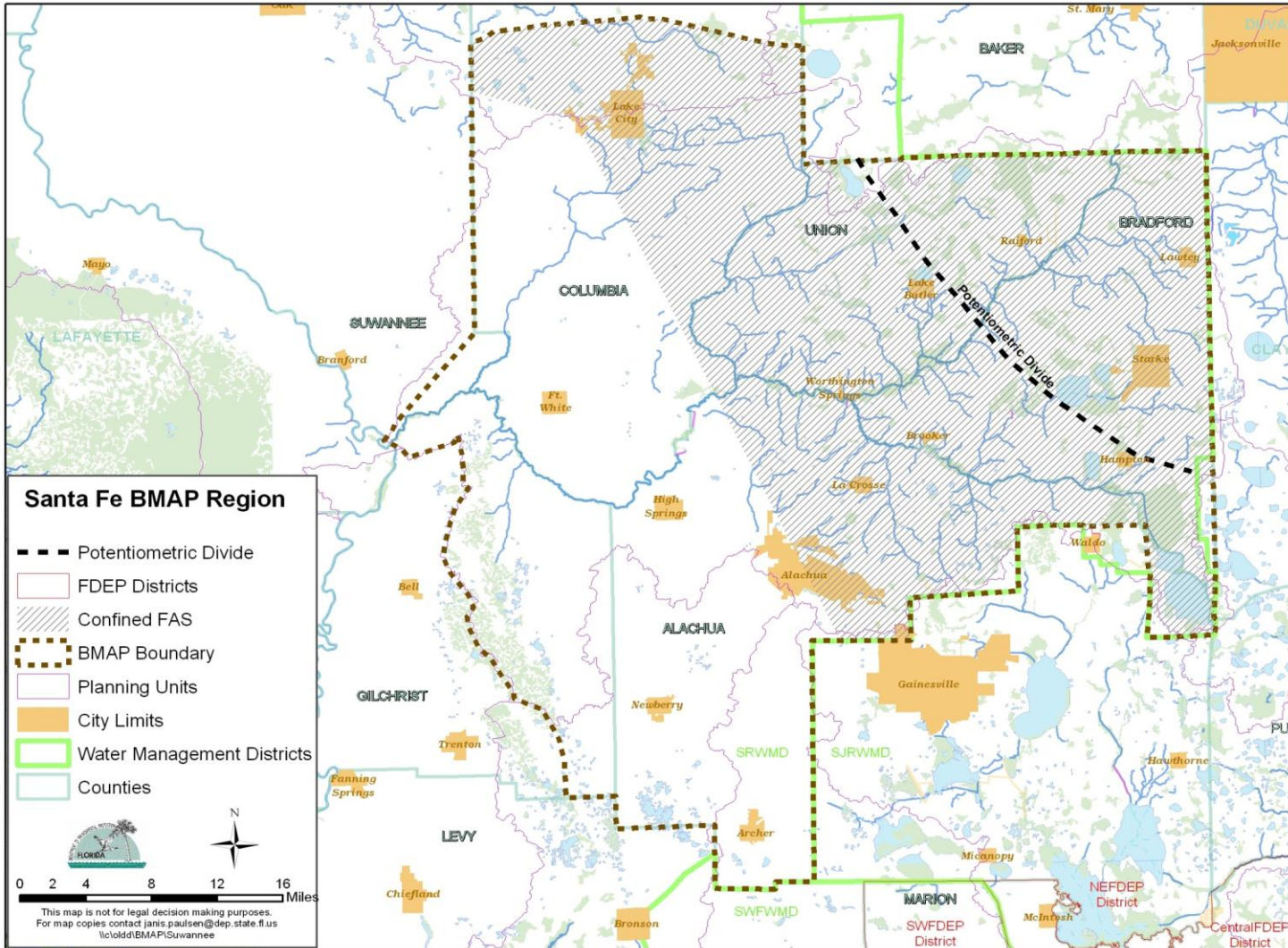
Terry Hansen, P.G. FDEP

March 16, 2010
Ft. White Community Center

New location for meeting Files

http://publicfiles.dep.state.fl.us/DEAR/BMAP/Santa_Fe
and select appropriate file folder

Santa Fe River BMAP Area



Past Meeting Review

- November '09
 - TMDL Review & Overview of BMAP Process
- January '10
 - Meeting Format, BMPs, Technical Approach
- February '10
 - Technical Approach, Projects, Silviculture BMPs

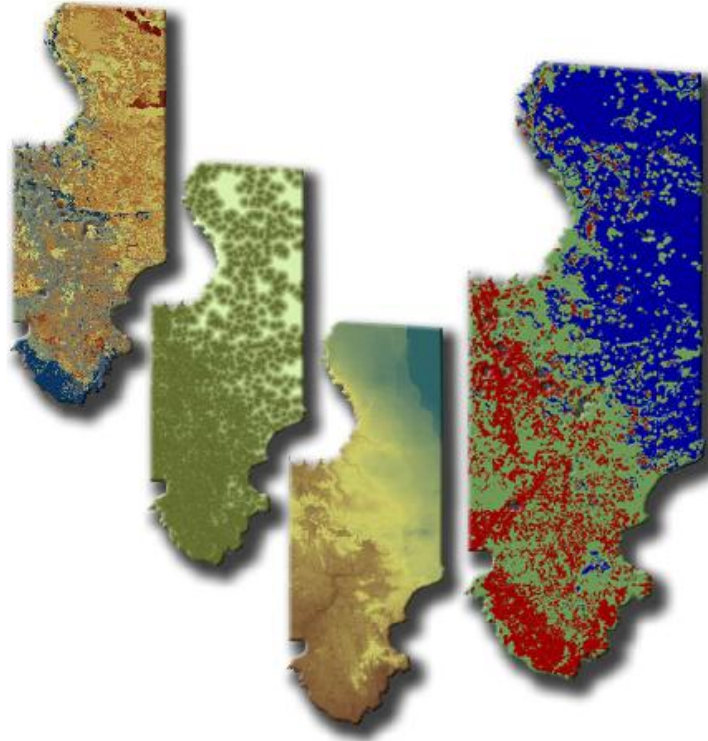
Meeting Overview

- Aquifer Vulnerability Assessments
- Agriculture BMPs
- Review
- Closure



THE COLUMBIA COUNTY AQUIFER VULNERABILITY ASSESSMENT

A Groundwater Protection and Management Tool



Prepared for the Suwannee River Water Management District by Advanced GeoSpatial Inc.



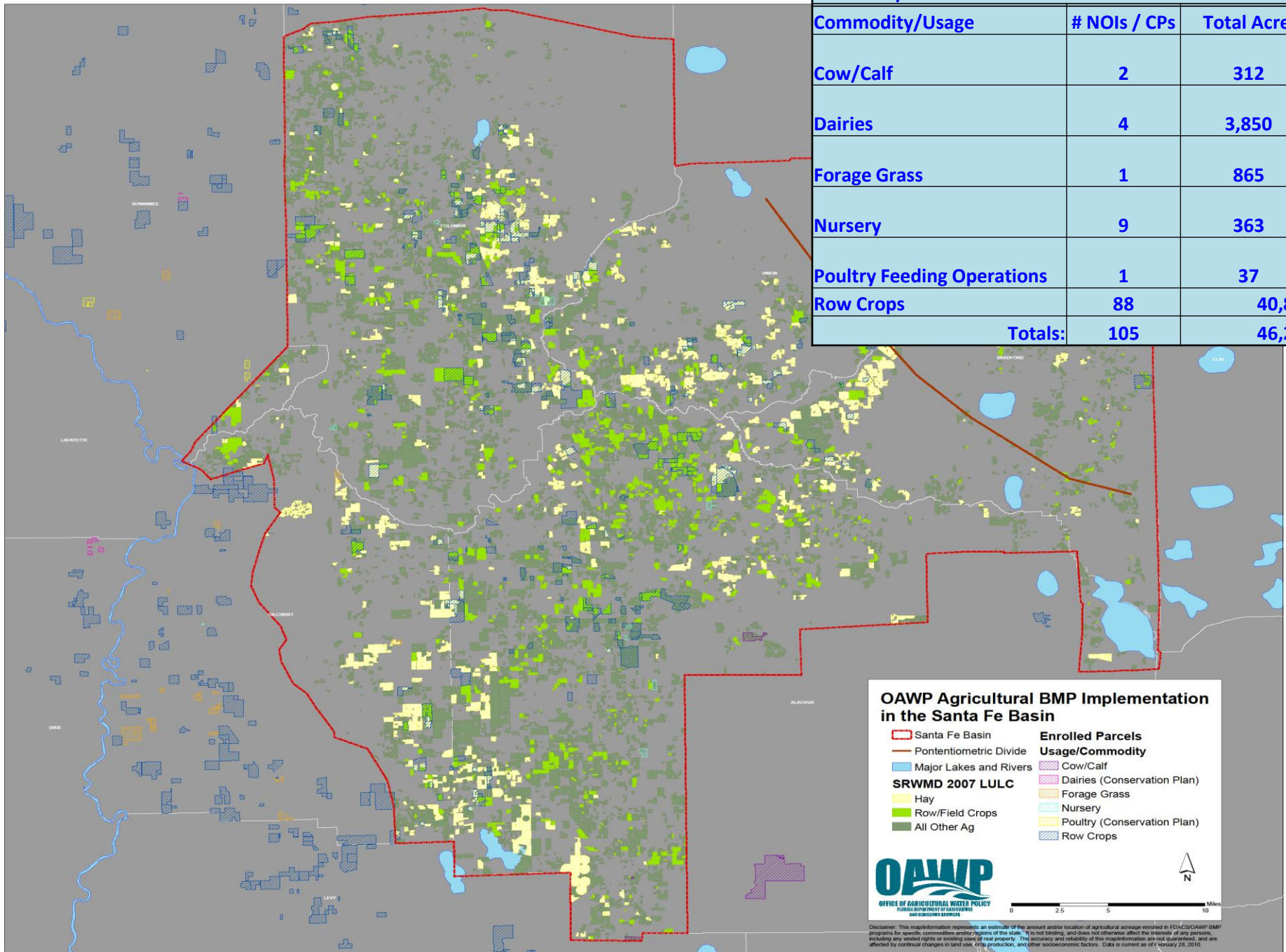
FDACS-OAWP

Adopted BMPs

OAWP Adopted BMPs	Rules
Ridge Citrus	<u>5E-1.023</u>
Indian River Citrus	<u>5M-2</u>
Peace River Citrus	<u>5M-5</u>
Gulf Citrus	<u>5M-7</u>
Lake Okeechobee BMPs	<u>5M-3</u>
Florida Container Nurseries	<u>5M-6</u>
Florida Vegetable & Ag Crops	<u>5M-8</u>
Florida Sod	<u>5M-9</u>
Manure Application	<u>5M-10</u>
Florida Cow/Calf Operations	<u>5M-11</u>

NOI / CP Enrollment in the Santa Fe BMAP Basin

Commodity/Usage	# NOIs / CPs	Total Acres
Cow/Calf	2	312
Dairies	4	3,850
Forage Grass	1	865
Nursery	9	363
Poultry Feeding Operations	1	37
Row Crops	88	40,805
Totals:	105	46,231



Next Meeting Topics

- April 13, 2010 FWCC 0930
 - Other BMPs
 - Fertilizer Ordinance
 - 2009 Legislation SB 430 and model ordinance
 - OSTDS
 - 2010 Proposed legislation SB1738
 - 5 yr inspection program
 - Springshed Protection
 - Stormwater
 - Come to meeting prepared to ask questions

