

Fact Sheet: The Santa Fe River Springs Basin Working Group

The purpose of the Santa Fe River Springs Basin Working Group is to create a forum in which professionals, government agencies, and the public can learn about and discuss issues and activities that can affect the quality and quantity of water in Poe, Ginnie, Hornsby, and Gilchrist Blue Springs and their contributing areas in Alachua, Columbia, and Gilchrist Counties.

The full Working Group meets three to four times a year, and the **public is welcome**. At each meeting, participants report on activities that are underway relevant to the springs and the areas that contribute to them. Professionals from the region also present on current research and springs issues.

Stacie Greco, the Working Group Coordinator, can be contacted at 352-264-6829 or sgreco@AlachuaCounty.us

Learn more about the group and view agendas and presentations at
WWW.SantaFeRiverSprings.com

Next Meeting: Wednesday February 16, 2011
Location, time, and agenda TBD

Selected Accomplishments

In September 2006 the Working Group presented a forum on springs protection issues in High Springs. The forum included breakout sessions that explored stormwater, wastewater, and land use development issues and was attended by over 90 people including a number of local elected officials.

The www.SantaFeRiverSprings.com website was created to inform the public about local springs protection issues.

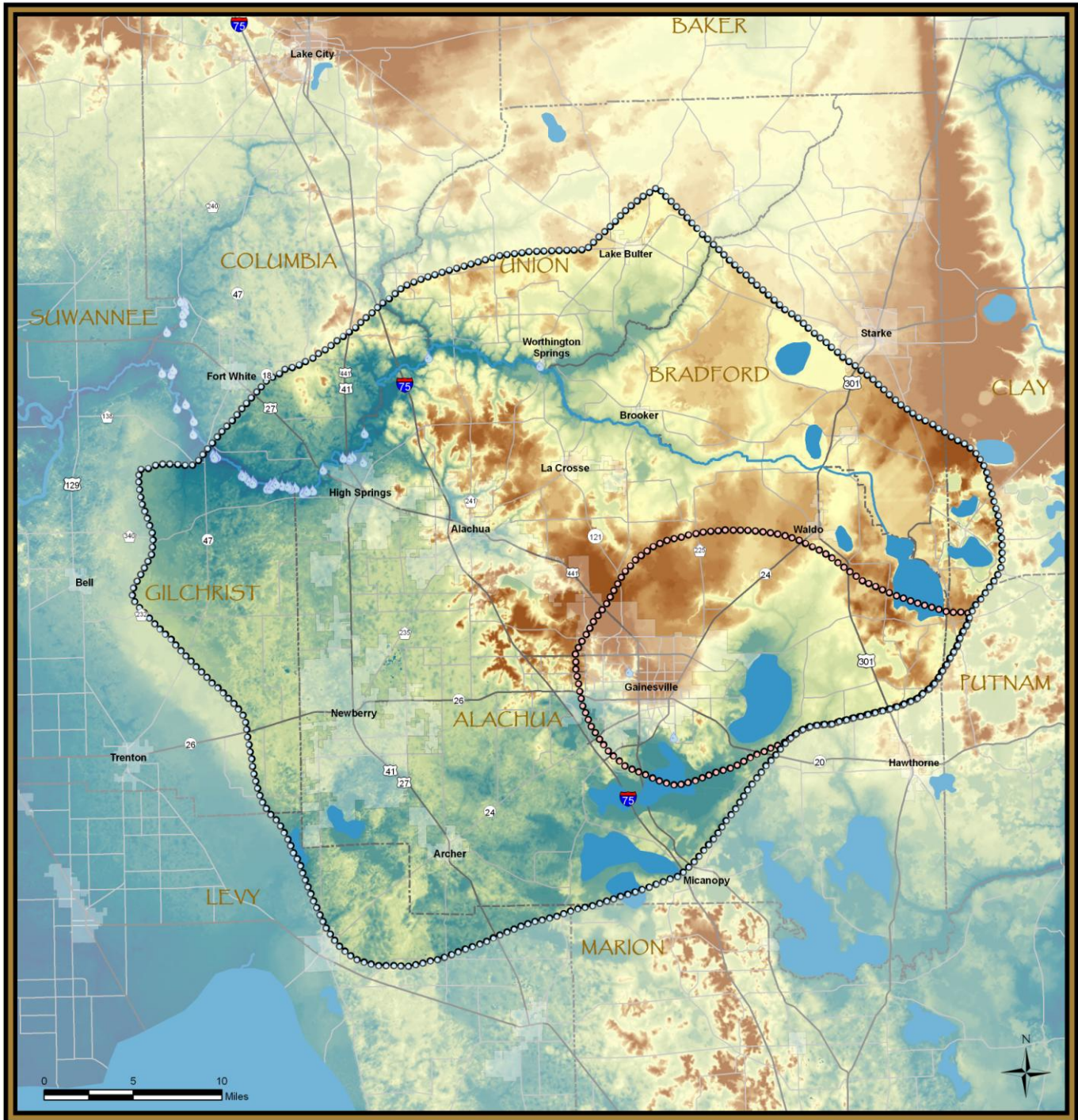
Members of the group have collaborated in several local events that focused on springs protection, including the annual Springs Celebration. This event will be at O'Leno State Park on March 26, 2011 in conjunction with the Friends of O'Leno Chili Cook Off.

The group collaborated in February 2006 with local nonprofit Current Problems, Inc. to clean up an abandoned phosphate pit on the Alachua- Gilchrist County line. More than 40 volunteers and 13 sponsoring organizations removed over 14 tons of trash and debris over three days.

A springs protection poster was created and printed with the goal of educating the public by hanging them in public places within the basin.

The Springshed of the Santa Fe River Springs

Below is a map showing the springshed of the Santa Fe River Springs Basin Working Group. A springshed is the area that contributes water to the discharge of a spring. The boundaries were created by combining data from groundwater flow models, tracer studies, cave divers, and measurements of water levels in wells. To protect the springs we need to minimize pollution and water use within this area. Learn more at SantaFeRiverSprings.com.



May 2008 Springshed Delineation

Spring

Santa Fe River Springs Basin Working Group Springs Basin Boundary

Gainesville Wellfield Capture Zone

Elevation 5 Feet → 220 Feet