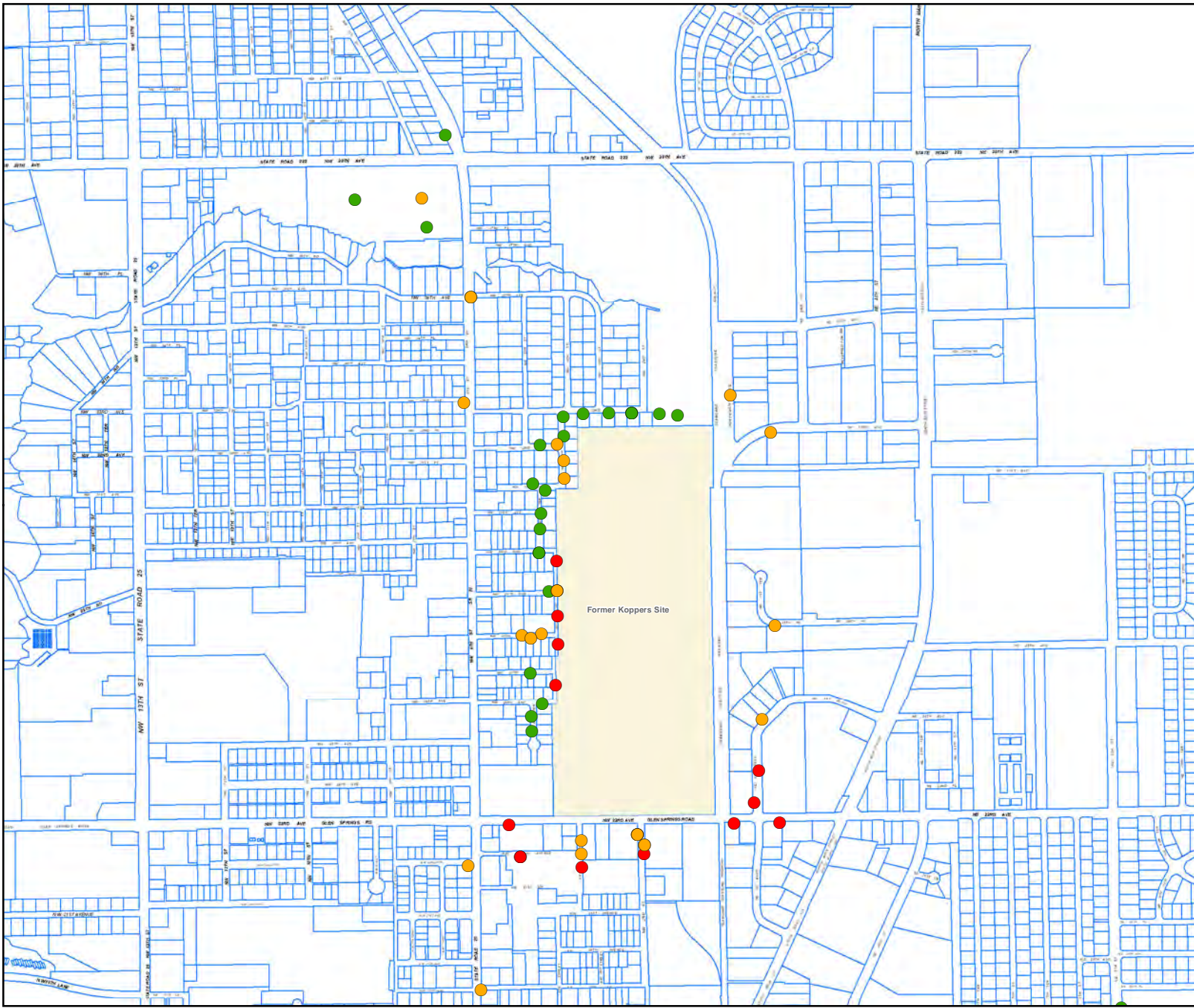
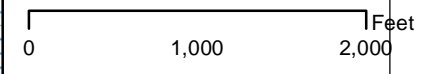


# Surface Soil (0-6") Data for Benzo(a)pyrene (BAP-TE) (mg/Kg)



**Updated August 2012**

- ≤0.100
- ≤0.700 and >0.100
- >0.700



**Map Legend**

- Former Koppers Site
- Concentration Above FDEP Commercial SCTL
- Concentration Above FDEP Residential SCTL
- Concentration Below FDEP Residential SCTL

**DISCLAIMER:** This map and the spatial data it contains are made available as a public service, to be used for reference purposes only. The Alachua County Environmental Protection Department provides this information AS IS without warranty of any kind, implied or expressed, regarding accuracy, completeness, or fitness of use. The quality of the data is dependent on the various sources from which each data layer is obtained.