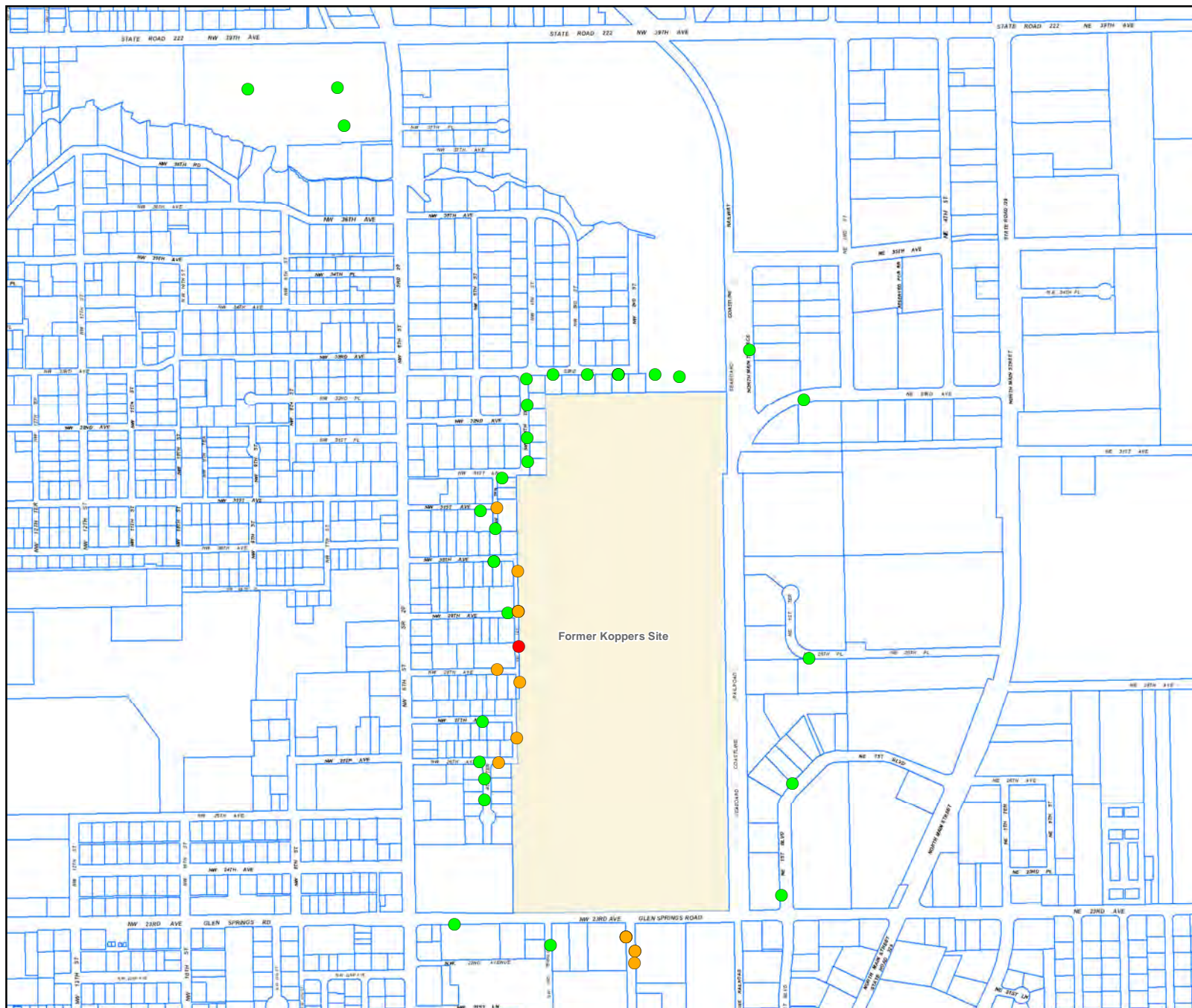


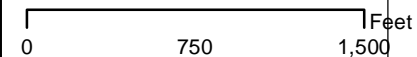
Surface Soil (0-6") Data for Arsenic (As) (mg/Kg) 8-2012



Updated August 2012

As_mg_Kg

- ≤ 2.1
- ≤ 12 and > 2.1
- > 12



Map Legend

- Former Koppers Site
- Concentration Above FDEP Commercial SCTL
- Concentration Above FDEP Residential SCTL
- Concentration Below FDEP Residential SCTL

DISCLAIMER: This map and the spatial data it contains are made available as a public service, to be used for reference purposes only. The Alachua County Environmental Protection Department provides this information AS IS without warranty of any kind, implied or expressed, regarding accuracy, completeness, or fitness of use. The quality of the data is dependent on the various sources from which each data layer is obtained.