



Alachua County

Alachua County Forever

Payne's Prairie Sweetwater Addition Project



Sweetwater Branch creek flowing through the property.
Photo credit: Sandra Vardaman, Alachua County Forever.



Longleaf Pine Regeneration in the Sandhill Habitat.
Photo credit: Sara Leitman, Alachua County Forever.

Sellers: Sweetwater LTD

Purchase Price: \$67,000/acre

Size: 114 acres

- Project located on the City/County boundary adjacent to Payne's Prairie Preserve State Park, Boulware Springs City Park, Evergreen Cemetery, and the Downtown Connector portion of the Gainesville-Hawthorne Trail.
- Outstanding Features include: Seepage slope, sandhill, Sweetwater Branch seepage stream, floodplain forest, Solomon's seal, southern lady fern, provides important connectivity between adjacent parks and preserves.
- Habitat for American alligators, wading birds, gopher tortoises, and indigo snakes.
- Will provide excellent opportunities for passive recreation-located along the Downtown Connector Trail and will provide trailside facilities including interpretive displays, wildlife observation platforms, bicycle racks, and hiking trails.
- Cultural resources include the Sweetwater Scatter archaeological site, with high probability for other prehistoric and historic sites.
- Site will be managed as a preserve to enhance its natural resource values and provide a nature-based passive recreation for residents and visitors accessible from the Trail.
- Will be managed using a combination of invasive plant control, prescribed fire, natural regeneration and re-vegetation.
- Florida Communities Trust provided a \$5,831,319 grant to assist the County with the Acquisition

ALACHUA COUNTY FOREVER REFERENDUM

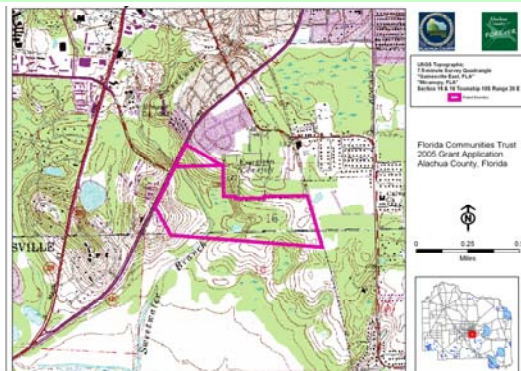
Approved in November 2000 by the voters, to acquire, improve and manage the county's environmentally sensitive lands to protect water resources, wildlife habitats and natural areas suitable for resource-based recreation.

Program Notes

- ✓ Alachua County Forever responds to public nominations.
- ✓ Property owners must be willing. Condemnation of property is not permitted under Alachua County Forever.
- ✓ Projects evaluated by staff and the Land Conservation Board.
- ✓ Criteria include protection of water resources, habitats, species, social value, manageability, and the economics of the acquisition.
- ✓ The County Commission approves acquisition projects.
- ✓ County can acquire property outright or certain rights through less-than-fee mechanisms such as conservation easements.
- ✓ Offers are made based on independent, private appraisals.
- ✓ Program funded through a \$29 million in voter-approved bonds.
- ✓ Program actively seeks state, federal and private grants.
- ✓ Properties are managed as preserves.
- ✓ Resource-compatible, passive recreation is encouraged on sites where appropriate.

For more information:

Ramesh P. Buch, Program Manager
Alachua County Forever
201 SE Second Avenue, Suite 201
Gainesville, Florida 32601
Ph: (352) 264-6800.
Fax: (352) 264-6852
Email: rbuch@alachua.fl.us
Website: http://environment.alachua.fl.us/Land_Consevation/index.htm



Alachua County Commission

Lee Pinkoson, Chair
Paula M. DeLaney, Vice-Chair
Mike Byerly
Cynthia Moore-Chestnut
Rodney J. Long

County Manager

Randall H. Reid

Environmental Protection Dept.

Chris Bird, Director