



Alachua County

Alachua County Forever's San Felasco Hammock Cellon Creek Addition



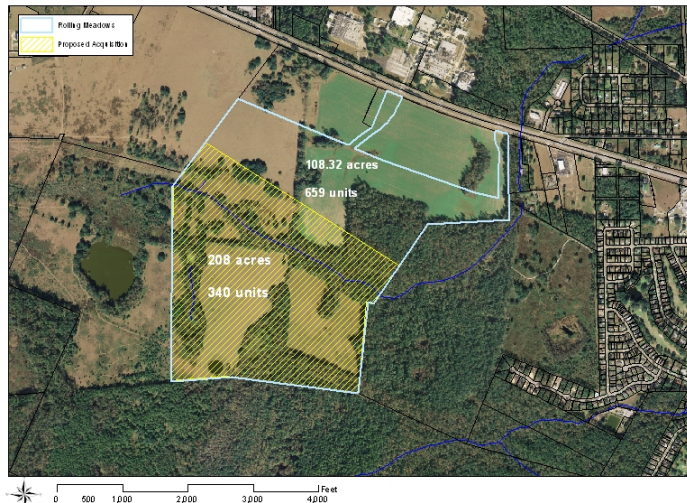
Purchase Date: April 28, 2011
Seller: Rolling Meadows, LLC
Purchase Price: \$2,331,280 **Size:** 208 acres

- The Cellon Creek Addition is adjacent to the north side of San Felasco Hammock Preserve State Park on US 441 in Alachua.
- This acquisition adds 208 acres to the State Park joining the 379-acre Turkey Creek and 65-acre North Addition recently acquired by Alachua County.
- The property also protects three-quarters of a mile of Cellon Creek, a disappearing stream which flows into the Floridan aquifer via Lee Sink within San Felasco Hammock Preserve State Park.
- The site will be managed for the County by the State Park Service and possesses good recreation potential given its proximity to the State Park. Multi-use recreational trails within the state park are visible from the property, and could easily be extended to include upland portions of the property. A popular trail head associated with these trails is located within 2 miles of the property.

ALACHUA COUNTY FOREVER MISSION
 Approved in November 2000 by the voters, to acquire, improve and manage the county's environmentally sensitive lands to protect water resources, wildlife habitats and natural areas suitable for resource-based recreation.

- Program Notes**
- ✓ Alachua County Forever responds to public nominations.
 - ✓ Property owners must be willing. Condemnation of property is not permitted under Alachua County Forever.
 - ✓ Projects evaluated by staff and the Land Conservation Board.
 - ✓ Criteria include protection of water resources, habitats, species, social value, manageability, and the economics of the acquisition.
 - ✓ The County Commission approves acquisition projects.
 - ✓ County can acquire property outright or certain rights through less-than-fee mechanisms such as conservation easements.
 - ✓ Offers are made based on independent, private appraisals.
 - ✓ Program funded by \$29 million in voter-approved bonds and \$15 million in Sales Surtax.
 - ✓ Program actively seeks state, federal and private grants.
 - ✓ Properties are managed as preserves.
 - ✓ Resource-compatible, passive recreation is encouraged on sites where appropriate.

- This is the eighth acquisition using the Wild Spaces and Public Places Surtax, approved by the voters in 2008 to extend the ACF Program.



For more information:
 Ramesh P. Buch, Program Manager
 Alachua County Forever
 201 SE Second Avenue, Suite 201
 Gainesville, Florida 32601
 (352) 264-6800
<http://alachuacountyforever.us>



Alachua County Commission

Lee Pinkoson, Chair
 Paula M. DeLaney, Vice-Chair
 Rodney J. Long
 Mike Byerly
 Susan Baird

Administration

Randall H. Reid, County Manager
 Chris Bird, Environmental Protection Dept. Director

