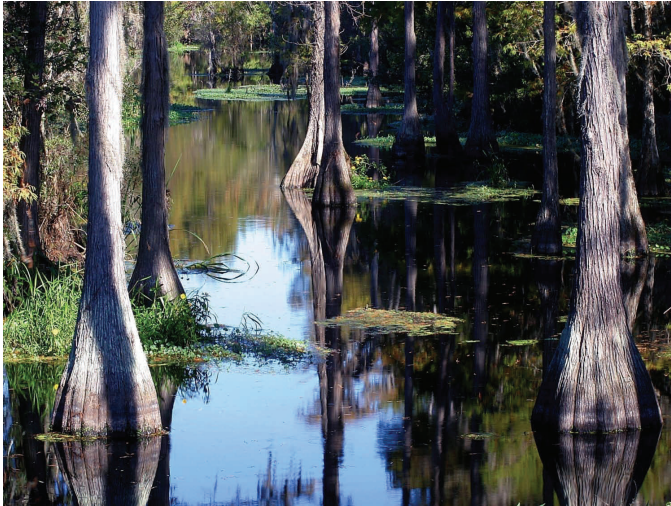




Alachua County

Alachua County Forever Lochloosa Connector—River Styx



River Styx

Sellers: Rayonier Timberlands

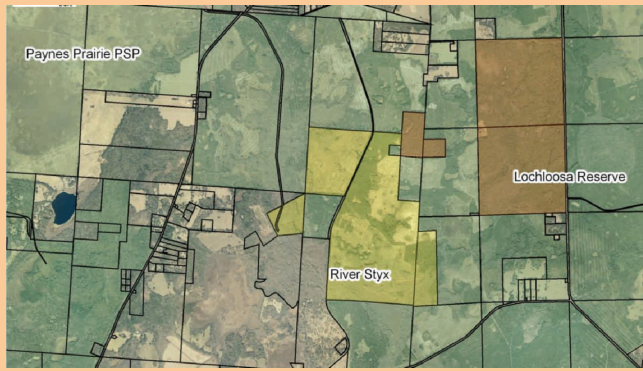
Purchase Price: \$4,855,506

Size: 1,428 acres

- The River Styx property is located north of Lochloosa Lake and CR 325, just west of the Lochloosa Longleaf Flatwoods Reserve in Southwest Alachua County. It is one of the keystone parcels in the Lochloosa Connector Project.
- The St Johns River Water Management District (SJRWMD) 10,400 acres around Lochloosa Lake, and holds conservation easements on an additional 16,944 acres.
- The SJRWMD contributed 50% of the acquisition cost and is managing the property.
- This entire area, known as the Lochloosa Wildlife Conservation Area, connects Lochloosa, Paynes Prairie Preserve State Park, Marjorie Kinnan Rawlings Historical State Park, and Newnan's Lake Conservation Area.
- River Styx has 300 acres of high quality river, strand and swamp communities in excellent to good quality, and about 1,000 acres of flatwoods and pine plantation. River Styx and the associated swale and strand swamp are in excellent condition and provide great wildlife habitat. It is an extremely important area for wildlife such as Florida black bear, bald eagles and numerous listed wading birds including wood storks. It is biologically connected to the Micanopy Wood Stork rookery, the largest and most stable rookery of these federally listed birds in north central Florida. The drainage is into Orange Lake and there is some interchange with the Floridan Aquifer and some flow into Orange Creek and the Ocklawaha River basin. It is also part of the headwaters for Orange Lake.

Program Notes

- Alachua County Forever responds to public nominations.
- Property owners must be willing. Condemnation of property is not permitted under Alachua County Forever.
- Projects evaluated by staff and the Land Conservation Board.
- Criteria include protection of water resources, habitats, species, social value, manageability, and the economics of the acquisition.
- The County Commission approves acquisition projects.
- County can acquire property outright or certain rights through less-than-fee mechanisms such as conservation easements.
- Offers are made based on independent, private appraisals.
- Program funded through a \$29 million in voter-approved bonds.
- Program actively seeks state, federal and private grants.
- Properties are managed as preserves.
- Resource-compatible, passive recreation is encouraged on sites



Flatwoods on the property

ALACHUA COUNTY FOREVER REFERENDUM

Approved in November 2000 by the voters, to acquire, improve and manage the county's environmentally sensitive lands to protect water resources, wildlife habitats and to provide natural areas suitable for resource-based recreation.

For more information:
Ramesh P. Buch, Program Manager
Alachua County Forever
201 SE Second Avenue, Suite 201
Gainesville, Florida 32601
Ph: (352) 264-6800. Fax: (352) 264-6852
Email: rbuch@alachuacounty.us
Website: <http://www.alachuacounty.us/government/depts/epd/land/>



Alachua County Commission
Rodney J. Long, Chair
Mike Byerly, Vice-Chair
Cynthia Moore-Chestnut
Lee Pinkoson
Paula DeLaney

County Manager
Randall H. Reid

Environmental Protection Dept.
Chris Bird, Director