



Alachua County

Alachua County Forever

Lake Santa Fe — Lake Alto North Addition



View of Lake Alto from the property

Sellers: Overton

Purchase Price: \$850,000

Size: 110 acres

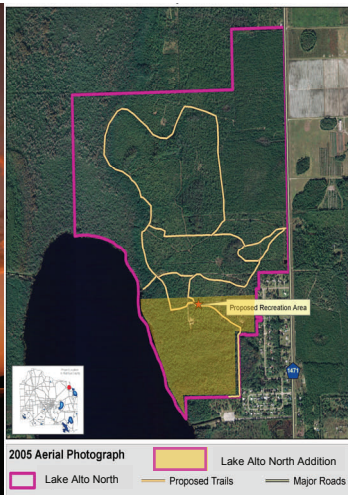
- Property is located on the east side of Lake Alto, behind Lake Alto Estates off of CR-1471.
- Key feature is its placement within a matrix of conservation lands that stretch from the Santa Fe River and Suwannee River Water Management District's Lake Alto Swamp on the north to the privately conserved Longleaf Ecology and Forestry Society (LEAFS) properties on the south.
- The property, with 2,878 feet of shoreline, connects Alachua County's 280-acre Lake Alto North Preserve (purchased by ACF in 2005) to Lake Alto Boat Ramp.
- About 1.5 miles of the eastern shoreline is now protected.
- The property is in good condition, consisting of typical lake shore swamp surrounding Lake Alto that is dominated by large majestic loblolly bays which grades into wet and then mesic flatwoods to the east. A large basin swamp and bog is in the center of the property.

Program Notes

- Alachua County Forever responds to public nominations.
- Property owners must be willing. Condemnation of property is not permitted under Alachua County Forever.
- Projects evaluated by staff and the Land Conservation Board.
- Criteria include protection of water resources, habitats, species, social value, manageability, and the economics of the acquisition.
- The County Commission approves acquisition projects.
- County can acquire property outright or certain rights through less-than-fee mechanisms such as conservation easements.
- Offers are made based on independent, private appraisals.
- Program funded through a \$29 million in voter-approved bonds.
- Program actively seeks state, federal and private grants.
- Properties are managed as preserves.
- Resource-compatible, passive recreation is encouraged on sites where appropriate.



The "Alert" ferry that carried goods and passengers on Lakes Santa Fe and Alto between Melrose and Waldo



2005 Aerial Photograph
Lake Alto North
Lake Alto North Addition
Proposed Trails
Major Roads

ALACHUA COUNTY FOREVER REFERENDUM

Approved in November 2000 by the voters, to acquire, improve and manage the county's environmentally sensitive lands to protect water resources, wildlife habitats and to provide natural areas suitable for resource-based recreation.

For more information:
Ramesh P. Buch, Program Manager
Alachua County Forever
201 SE Second Avenue, Suite 201
Gainesville, Florida 32601
Ph: (352) 264-6800. Fax: (352) 264-6852
Email: rbuch@alachuacounty.us
Website: <http://www.alachuacounty.us/government/depts/epd/land/>



Alachua County Commission
Paula M. DeLaney, Chair
Rodney J. Long, Vice-Chair
Mike Byerly
Cynthia Moore-Chestnut
Lee Pinkoson

County Manager
Randall H. Reid

Environmental Protection Dept.
Chris Bird, Director