



Alachua County

Alachua County Forever's Lake Forest Creek - Teuton



ALACHUA COUNTY FOREVER MISSION

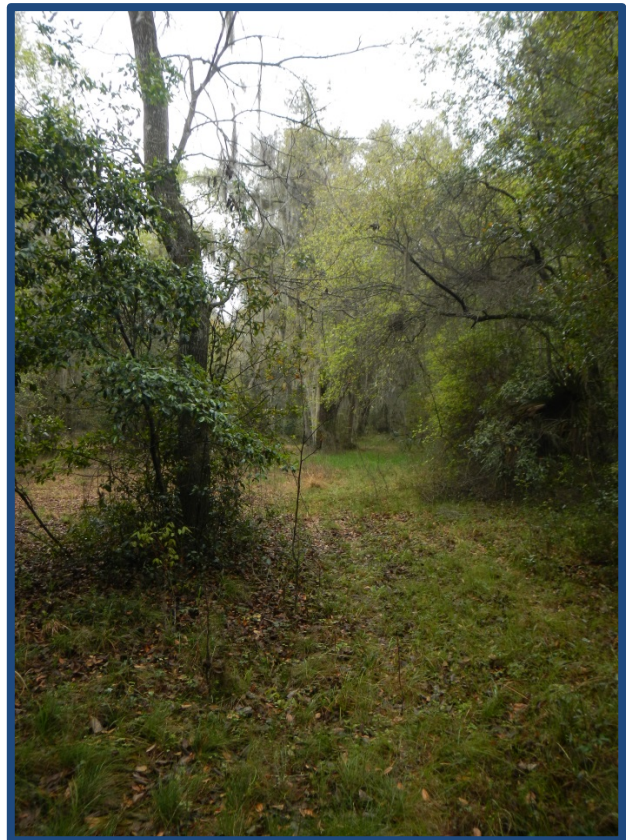
Approved in November 2000 by the voters, to acquire, improve and manage the county's environmentally sensitive lands to protect water resources, wildlife habitats and natural areas suitable for resource-based recreation.

Program Notes

- ✓ Alachua County Forever responds to public nominations.
- ✓ Property owners must be willing. Condemnation of property is not permitted under Alachua County Forever.
- ✓ Projects evaluated by staff and the Land Conservation Board.
- ✓ Criteria include protection of water resources, habitats, species, social value, manageability, and the economics of the acquisition.
- ✓ The County Commission approves acquisition projects.
- ✓ County can acquire property outright or certain rights through less-than-fee mechanisms such as conservation easements.
- ✓ Offers are made based on independent, private appraisals.
- ✓ Program funded by \$29 million in voter-approved bonds and \$15 million in Sales Surtax.
- ✓ Program actively seeks state, federal and private grants.
- ✓ Properties are managed as preserves.
- ✓ Resource-compatible, passive recreation is encouraged on sites where appropriate.

Purchase Date: January 9, 2014
Seller: Murray and Caroline Teuton
Purchase Price: \$11,424 **Size:** 2.02 acres

- The 2.02-acre Teuton property is located between the Gainesville-Hawthorne Rail-Trail and State Road 20, south of Newnans Lake. It fills in a gap between two State-owned parcels managed as part of the Paynes Prairie Preserve State Park
- Acquisition of this property provides additional buffer for the Park and protects the scenic vistas along the Rail-Trail. The property will be managed by the State Park Service as a unit of the Paynes Prairie.
- Historic aerial photographs of the property indicate it was intact hardwood forest from prior to 1937 until after 1974. Currently the hammock community consists of a canopy dominated by large, mature live oak, magnolia, pignut hickory and Florida elm, with sabal palm in the subcanopy, and American beauty berry, switchcane, yellow jessamine, and blackseed needlegrass in the understory.
- This is the 51st acquisition by ACF and the 23rd acquisition using the Wild Spaces and Public Places Surtax, approved by the voters in 2008 to extend the ACF Program.



For more information:
 Ramesh P. Buch, Program Manager
 Alachua County Forever
 408 West University Avenue, Suite 106
 Gainesville, Florida 32601
 (352) 264-6800
<http://alachuacountyforever.us>



Alachua County Commission

Lee Pinkoson, Chair
 Susan Baird, Vice-Chair
 Mike Byerly
 Charles "Chuck" Chestnut IV
 Robert "Hutch" Hutchinson
Administration
 Betty M. Baker, County Manager
 Chris Bird, Environmental Protection Dept. Director

