



# Alachua County

## Alachua County Forever's Lake Forest Creek – Floyd & Floyd



### ALACHUA COUNTY FOREVER MISSION

Approved in November 2000 by the voters, to acquire, improve and manage the county's environmentally sensitive lands to protect water resources, wildlife habitats and natural areas suitable for resource-based recreation.

### Program Notes

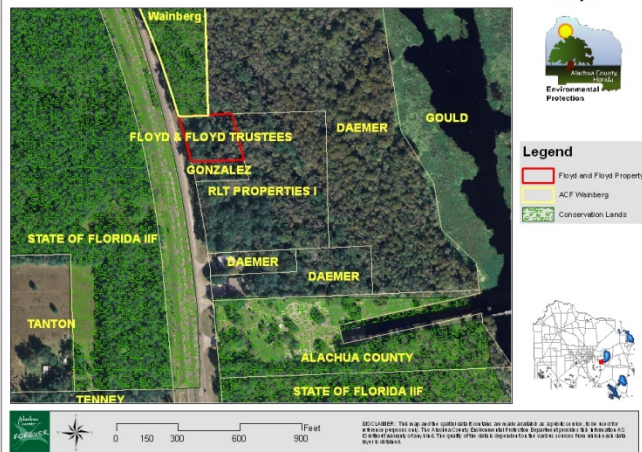
- ✓ Alachua County Forever responds to public nominations.
- ✓ Property owners must be willing. Condemnation of property is not permitted under Alachua County Forever.
- ✓ Projects evaluated by staff and the Land Conservation Board.
- ✓ Criteria include protection of water resources, habitats, species, social value, manageability, and the economics of the acquisition.
- ✓ The County Commission approves acquisition projects.
- ✓ County can acquire property outright or certain rights through less-than-fee mechanisms such as conservation easements.
- ✓ Offers are made based on independent, private appraisals.
- ✓ Program funded by \$29 million in voter-approved bonds and \$15 million in Sales Surtax.
- ✓ Program actively seeks state, federal and private grants.
- ✓ Properties are managed as preserves.
- ✓ Resource-compatible, passive recreation is encouraged on sites where appropriate.

**Purchase Date:** May 1, 2014  
**Seller:** Floyd & Floyd Trustees  
**Purchase Price:** \$50,501      **Size:** 1.41 acres

- The 1.41 acre Floyd & Floyd property is located in unincorporated Alachua County on SR-20 immediately south of the Newnans Lake Preserve and across SR-20 from Paynes Prairie Preserve State Park. The key features of this property are that it contains 1.32 acres of good quality natural area, and is adjacent to and could provide the necessary parking for the ACF Preserve.
- The natural communities on the property transition from west to east beginning with upland mixed forest on the western edge by SR-20, through hydric hammock, and then lake shore swamp surrounding Newnans Lake.
- The Floyd & Floyd site is located in an area of high archaeological significance, lying approximately 170 feet from the Lake Pithlachocco Canoe Archaeological Site. No evidence of looting was observed on the property.
- This is the 52nd acquisition by ACF and the 25th acquisition using the Wild Spaces and Public Places Surtax, approved by the voters in 2008 to extend the ACF Program.



Lake Forest Creek - Floyd & Floyd



For more information:  
 Ramesh P. Buch, Program Manager  
 Alachua County Forever  
 408 West University Avenue, Suite 106  
 Gainesville, Florida 32601  
 (352) 264-6800  
<http://alachuacountyforever.us>



### Alachua County Commission

Lee Pinkoson, Chair  
 Susan Baird, Vice-Chair  
 Mike Byerly  
 Charles "Chuck" Chestnut IV  
 Robert "Hutch" Hutchinson  
**Administration**  
 Betty M. Baker, County Manager  
 Chris Bird, Environmental Protection Dept. Director

