



Alachua County

Alachua County Forever

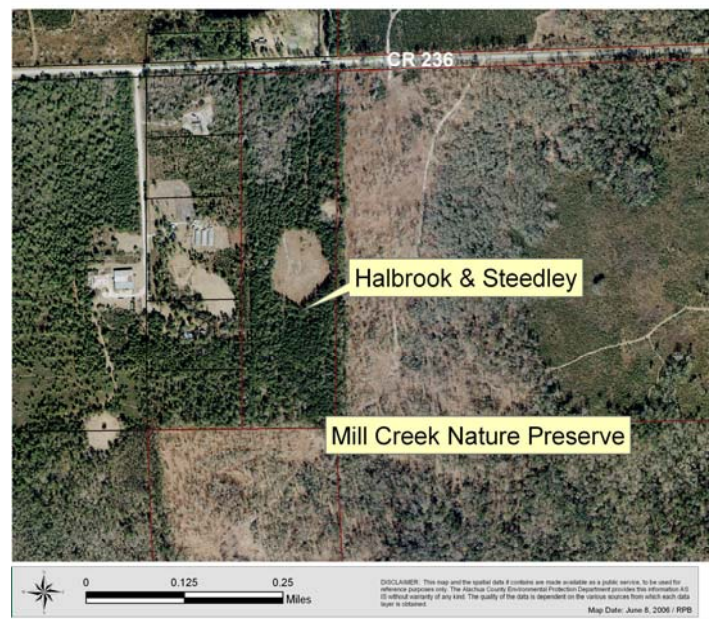
Mill Creek — Halbrook and Steedly Addition

Sellers: Halbrook and Steedly

Purchase Price: \$9,100/acre

Size: 36.32 acres

- This purchase not only adds more land to the west side of the Mill Creek Nature Preserve, already owned by Alachua County, but also serves to provide an excellent buffer for the preserve.
- The property is dominated by old field second growth forest consisting of slash and loblolly pine, an occasional long leaf pine, and water and laurel oaks.
- Also on the property are some good quality wetlands, which have been found to contain cinnamon fern, a commercially exploited plant as identified by the Florida Department of Agriculture and Consumer Services.
- The property has been observed to be utilized by deer, turkey, and water moccasin, and is likely used as a corridor between MCNP and other neighboring parcels.
- Fortunately no invasive plants were observed on the property, which will be managed along with the MCNP as a whole with the re-introduction of fire and native vegetation.
- Acquisition of this property will serve to enhance the recreational opportunities on the Mill Creek Nature Preserve.



Program Notes

- <> Alachua County Forever responds to public nominations.
- <> Property owners must be willing. Condemnation of property is not permitted under Alachua County Forever.
- <> Projects evaluated by staff and the Land Conservation Board.
- <> Criteria include protection of water resources, habitats, species, social value, manageability, and the economics of the acquisition.
- <> The County Commission approves acquisition projects.
- <> County can acquire property outright or certain rights through less-than-fee mechanisms such as conservation easements.
- <> Offers are made based on independent, private appraisals.
- <> Program funded through a \$29 million in voter-approved bonds.
- <> Program actively seeks state, federal and private grants.
- <> Properties are managed as preserves.
- <> Resource-compatible, passive recreation is encouraged on sites where appropriate.

ALACHUA COUNTY FOREVER REFERENDUM

Approved in November 2000 by the voters, to acquire, improve and manage the county's environmentally sensitive lands to protect water resources, wildlife habitats and natural areas suitable for resource-based recreation.

Alachua County Commission

Lee Pinkoson, Chair
Paula M. DeLaney, Vice-Chair
Mike Byerly
Cynthia Moore-Chestnut
Rodney J. Long

County Manager

Randall H. Reid

Environmental Protection Dept.

Chris Bird, Director

For more information:

Ramesh P. Buch, Program Manager
Alachua County Forever
201 SE Second Avenue, Suite 201
Gainesville, Florida 32601
Ph: (352) 264-6800.
Fax: (352) 264-6852
Email: rbuch@alachuacounty.us
Website: <http://www.alachuacounty.us/government/depts/epd/land/>



Basin Swamp on the Halbrook and Steedly Mill Creek addition.

Photo taken by Alachua County Forever staff.



Mesic flat-woods on the Halbrook and Steedly Mill Creek addition.

Photo taken by Alachua County Forever Staff.

