



Alachua County

Alachua County Forever

Watermelon Pond Project — Gladman Tract



Watermelon Pond. Photo taken by Steve Hofstetter

Sellers: Mary Helen Borsch / Helen Gladman
Purchase Price: 225,000 **Size: 82 acres**

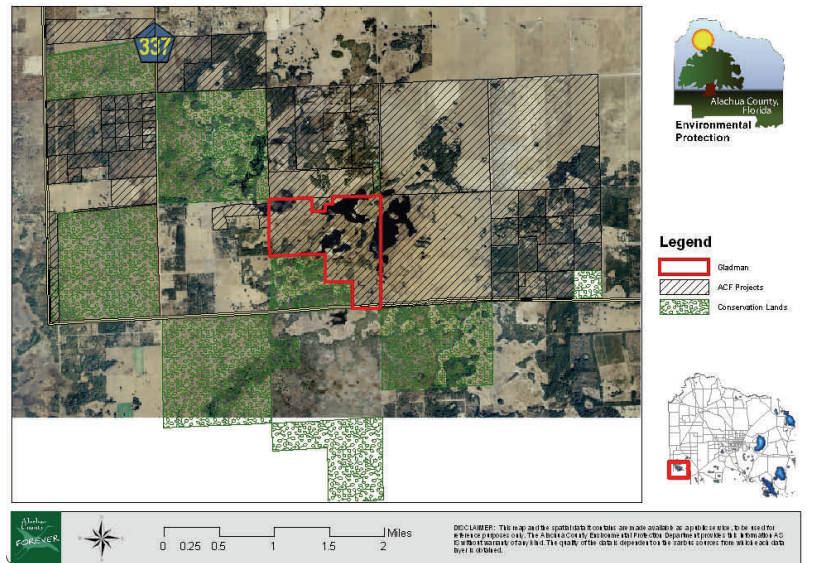
- This project is adjacent to the Florida Forever Watermelon Pond Project as well as properties that are currently on the Alachua County Forever Active Acquisition List and Goethe State Forest.
- This property composed of sandhill, sandhill lake, mesic flatwoods, xeric hammock, wet prairie and basin marsh all in good to excellent condition.
- Watermelon Pond has been identified by the Florida Fish and Wildlife Conservation Commission and the Florida Natural Areas Inventory as potentially significant habitat for significant species including Black Bear, Wood Stork, Sandhill Crane, Short-tailed Snake..
- The Watermelon Pond area is noted in the Closing the Gaps study as a Strategic Habitat Conservation Area.
- This property is well suited for such passive recreation activities as hiking and nature viewing. It is adjacent to the Watermelon Pond County Boat Ramp and Park, and Goethe State Forest.

Program Notes

- Alachua County Forever responds to public nominations.
- Property owners must be willing. Condemnation of property is not permitted under Alachua County Forever.
- Projects evaluated by staff and the Land Conservation Board.
- Criteria include protection of water resources, habitats, species, social value, manageability, and the economics of the acquisition.
- The County Commission approves acquisition projects.
- County can acquire property outright or certain rights through less-than-fee mechanisms such as conservation easements.



Flatwoods. Photo taken by Sandra Vardaman



ALACHUA COUNTY FOREVER REFERENDUM

Approved in November 2000 by the voters, to acquire, improve and manage the county's environmentally sensitive lands to protect water resources, wildlife habitats and natural areas suitable for resource-based recreation.

For more information:
 Ramesh P. Buch, Program Manager
 Alachua County Forever
 201 SE Second Avenue, Suite 201
 Gainesville, Florida 32601
 Ph: (352) 264-6800.
 Fax: (352) 264-6852
 Email: rbuch@alachuacounty.us
 Website: <http://www.alachuacounty.us/government/depts/epd/land/>



Alachua County Commission
 Paula M. DeLaney, Chair
 Rodney J. Long, Vice-Chair
 Mike Byerly
 Cynthia Moore-Chestnut
 Lee Pinkoson

County Manager
 Randall H. Reid

Environmental Protection Dept.
 Chris Bird, Director