



# Alachua County

## Alachua County Forever

### Payne's Prairie Addition Project — Bishop & Henderson



A cypress dome on the Bishop & Henderson parcel



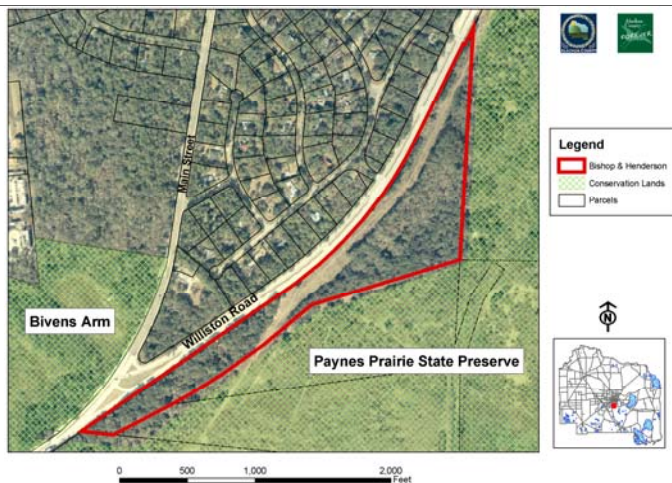
Second growth hardwood forests

**Sellers: Bishop and Henderson**

**Purchase Price: \$9,000/acre**

**Size: 25.08 acres**

- Project lies within the Paynes Prairie Addition Project area and is located just outside of the Gainesville city limits off of Williston road.
- This project is adjacent to both Paynes Prairie Preserve State Park and Biven's Arm Nature Park.
- Outstanding Features include: very good quality prairie hammock and good quality dome swamp, old field successional pine, and a part of the Sweetwater Branch floodplain
- Habitat deemed potentially significant by the Florida Fish and Wildlife Commission for twenty-seven animal species, including black bear, muskrat, and wood stork. Additionally, there are two eagles' nests within a mile of the site.
- Protection and management of this property will provide an excellent buffer for Paynes Prairie from Williston Road.
- The northeast area of the property is in very good condition, with little non-native invasive species and no solid waste dumping observed.
- Will be managed using a combination of invasive plant control, solid waste clean-up, natural regeneration and re-vegetation, and will most likely be managed by the State as part of Paynes Prairie Preserve State Park.
- Paynes Prairie has expressed no interest in developing public access through this parcel, and will therefore most likely use this property for passive recreation by linking to existing trails.



#### Program Notes

- ⇨ Alachua County Forever responds to public nominations.
- ⇨ Property owners must be willing. Condemnation of property is not permitted under Alachua County Forever.
- ⇨ Projects evaluated by staff and the Land Conservation Board.
- ⇨ Criteria include protection of water resources, habitats, species, social value, manageability, and the economics of the acquisition.
- ⇨ The County Commission approves acquisition projects.
- ⇨ County can acquire property outright or certain rights through less-than-fee mechanisms such as conservation easements.
- ⇨ Offers are made based on independent, private appraisals.
- ⇨ Program funded through a \$29 million in voter-approved bonds.
- ⇨ Program actively seeks state, federal and private grants.
- ⇨ Properties are managed as preserves.
- ⇨ Resource-compatible, passive recreation is encouraged on sites where appropriate.

#### ALACHUA COUNTY FOREVER REFERENDUM

*Approved in November 2000 by the voters, to acquire, improve and manage the county's environmentally sensitive lands to protect water resources, wildlife habitats and natural areas suitable for resource-based recreation.*

For more information:  
 Ramesh P. Buch, Program Manager  
 Alachua County Forever  
 201 SE Second Avenue, Suite 201  
 Gainesville, Florida 32601  
 Ph: (352) 264-6800.  
 Fax: (352) 264-6852  
 Email: [rbuch@alachuacounty.us](mailto:rbuch@alachuacounty.us)  
 Website: <http://www.alachuacounty.us/government/depts/epd/land/>



Alachua County Commission  
 Lee Pinkoson, Chair  
 Paula M. DeLaney, Vice-Chair  
 Mike Byerly  
 Cynthia Moore-Chestnut  
 Rodney J. Long

County Manager  
 Randall H. Reid  
Environmental Protection Dept.  
 Chris Bird, Director