



# Alachua County

## Alachua County Forever's Buck Bay Flatwoods – Cox & Moore



### ALACHUA COUNTY FOREVER MISSION

Approved in November 2000 by the voters, to acquire, improve and manage the county's environmentally sensitive lands to protect water resources, wildlife habitats and natural areas suitable for resource-based recreation.

### Program Notes

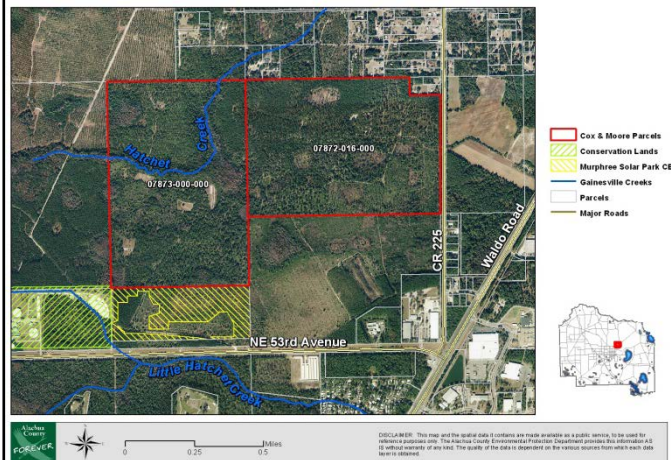
- ✓ Alachua County Forever responds to public nominations.
- ✓ Property owners must be willing. Condemnation of property is not permitted under Alachua County Forever.
- ✓ Projects evaluated by staff and the Land Conservation Board.
- ✓ Criteria include protection of water resources, habitats, species, social value, manageability, and the economics of the acquisition.
- ✓ The County Commission approves acquisition projects.
- ✓ County can acquire property outright or certain rights through less-than-fee mechanisms such as conservation easements.
- ✓ Offers are made based on independent, private appraisals.
- ✓ Program funded by \$29 million in voter-approved bonds and \$15 million in Sales Surtax.
- ✓ Program actively seeks state, federal and private grants.
- ✓ Properties are managed as preserves.
- ✓ Resource-compatible, passive recreation is encouraged on sites where appropriate.

**Purchase Date:** May 16, 2013  
**Seller:** Jacquelyn B. Moore & Judyth B. Cox  
**Purchase Price:** \$1,089,593      **Size:** 463 acres

- The property is located on NE 38<sup>th</sup> Street (County Road 225), north of NE 53<sup>rd</sup> Avenue and consists of two parcels which were managed for timber production
- The City of Gainesville Murphree Water Plant is adjacent to the southwest corner. The parcels lie within the primary and secondary protection zone of the well field and are located within one-quarter mile of existing production wells.
- The property consists primarily of mesic pine flatwoods interspersed with forested wetlands. Most of the planted stands are slash pine. However past silviculture was practiced lightly and has encouraged abundant and diverse native groundcover. Longleaf pine are scattered throughout the property, and are naturally regenerating.
- One wet flatwoods natural community contains numerous hooded pitcher plants, listed as threatened in Florida. Active gopher tortoise burrows are also located within the mesic flatwoods community. Wetlands on the property consist of floodplain swamp and bottomland forest associated with 4,000 feet of Hatcher Creek, and several isolated dome swamps.
- This is the forty-ninth acquisition by ACF and the twentieth acquisition using the Wild Spaces and Public Places Surtax, approved by the voters in 2008 to extend the ACF Program.



Buck Bay Flatwoods - Cox & Moore Aerial Map



**For more information:**  
 Ramesh P. Buch, Program Manager  
 Alachua County Forever  
 408 West University Avenue, Suite 106  
 Gainesville, Florida 32601  
 (352) 264-6800  
<http://alachuacountyforever.us>



### Alachua County Commission

Mike Byerly, Chair  
 Lee Pinkoson, Vice-Chair  
 Susan Baird  
 Charles "Chuck" Chestnut IV  
 Robert "Hutch" Hutchinson

### Administration

Richard Drummond, County Manager  
 Chris Bird, Environmental Protection Dept. Director

