

Figure 1: BioRecon Locations within Alachua County

Legend

BioRecon Sites

- ▲ Healthy
- Suspect
- Impaired
- ~ Creeks
- Lakes

Santa Fe River Tributaries

- Santa Fe River Springs
- Santa Fe River Tributaries
- North Central Region
- Hogtown Creek
- Newnans Lake
- Paynes Prairie

SITE ID	SITE LOCATION
BVC	Beville Creek North of NW 8 th Ave
BLC	Blues Creek East of NW 71 st St
BLWRSR	Boulware Springs Run in Robinson Heights
CELCR	Callon Creek West of US 441
CSX	CSX Ditch to Sweetwater Branch
DRC	Deer Run Creek at bridge in State Park
DM	Devil's Millhopper State Park in Sink
HAT225	Hatchet Creek at CR 225 near NE 90 th Pl
HOG45	Hogtown Creek between NW 45 th and 53 rd Ave
HOGSS	Hogtown Creek after Springstead Confluence
HOGSINK	Hogtown Creek at Halle Sink
HORNBSBY	Hornsby Springs Run at Camp Kulaquia
LFCMS	Lake Forest Creek at Morningside Center
LFC43	Lake Forest Creek East of SE 43 rd St
LHTS3	Little Hatchet Creek South of NE 53 rd Ave
LHTNB	Little Hatchet Creek North Branch
LHTW26	Little Hatchet Creek West Branch North of SR 26
LMONT	Little Montecocha Creek South of CR 340
MILLOBR	Mill Creek at Old Bellamy Rd
MHC	Millhopper Creek at NW 39 th Way
MONT43	Monterrey Creek West of NW 43 rd St
PARBR	Pariners Branch NW of CR 241 and 236
POESP	Poe Springs Run at Poe Springs Park
POSS3AV	Possum Creek South of NW 53 rd Ave
POSS8AV	Possum Creek North of NW 8 th Ave
RATTSN	Rattlesnake Creek near NW 22 nd St
RIDGEV	Ridgeview Creek at NW 26 th Way
SPRST	Springstead Creek at NW 34 th Ave and 5 th St
SWBPP	Sweetwater Branch downstream of SE 2 nd Pl
SWBSE2	Sweetwater Branch upstream of SE 4 th St
SWBSE4	Sweetwater Branch at Paynes Prairie
3LAKE	Three Lakes Creek upstream of Glen Springs Rd
TWNSBR	Townsend Branch SW of CR 241 and 236
TUMPKY	Tumblin Creek at P.K. Yonge School
TRKCR	Turkey Creek at NW 105 th Ave

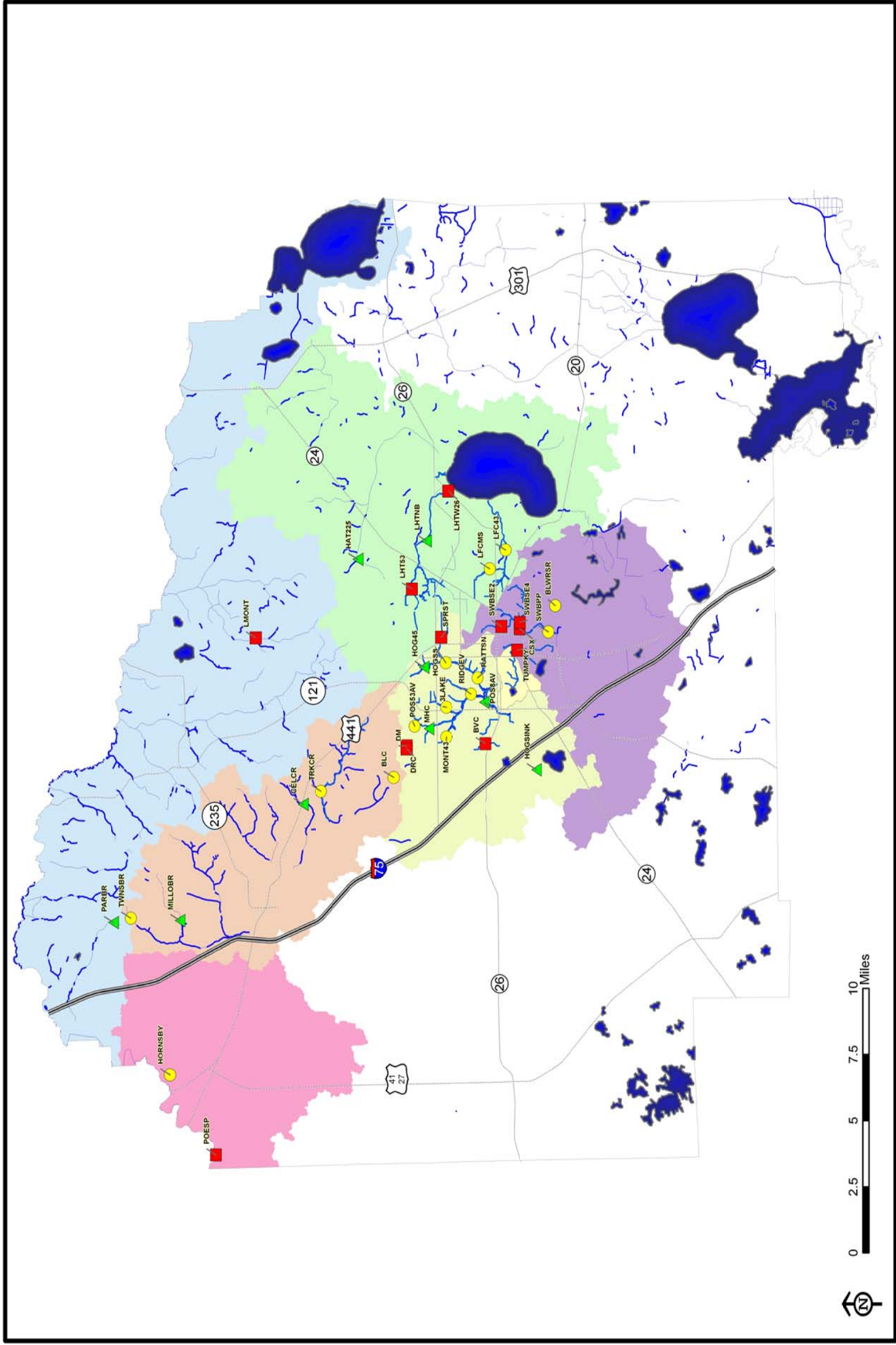
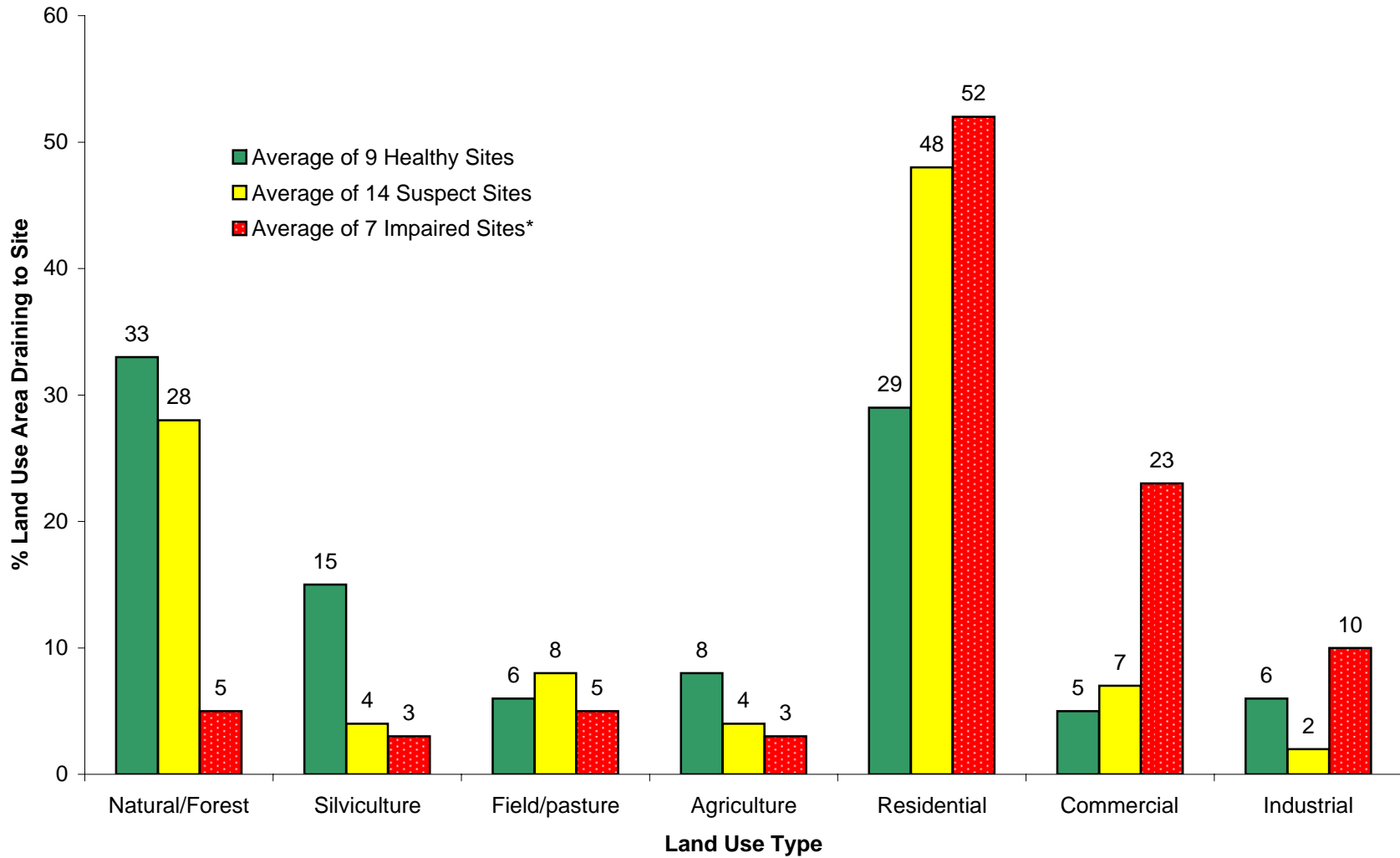
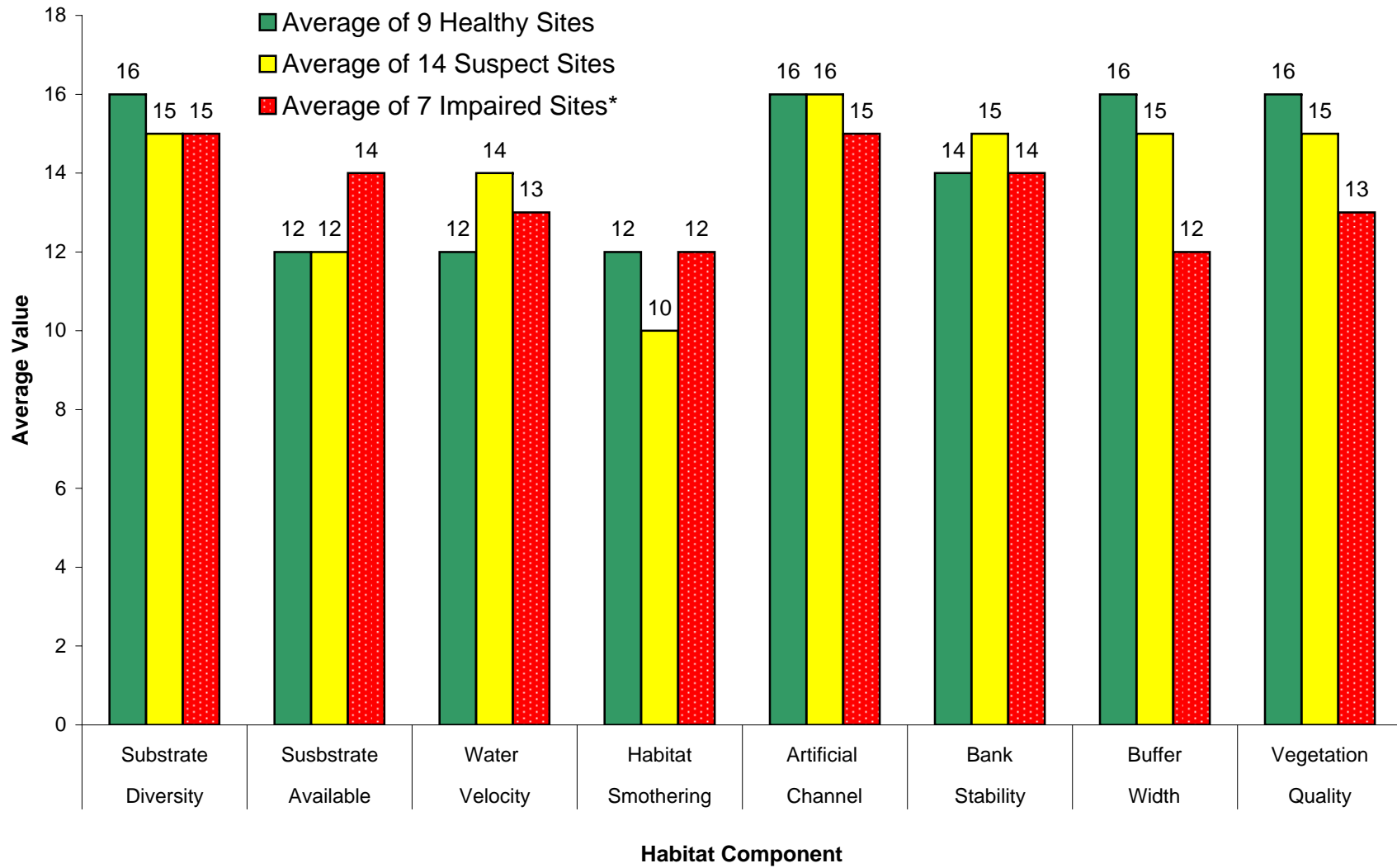


Figure 2
Comparison of Watershed Land Use for Alachua County Creeks



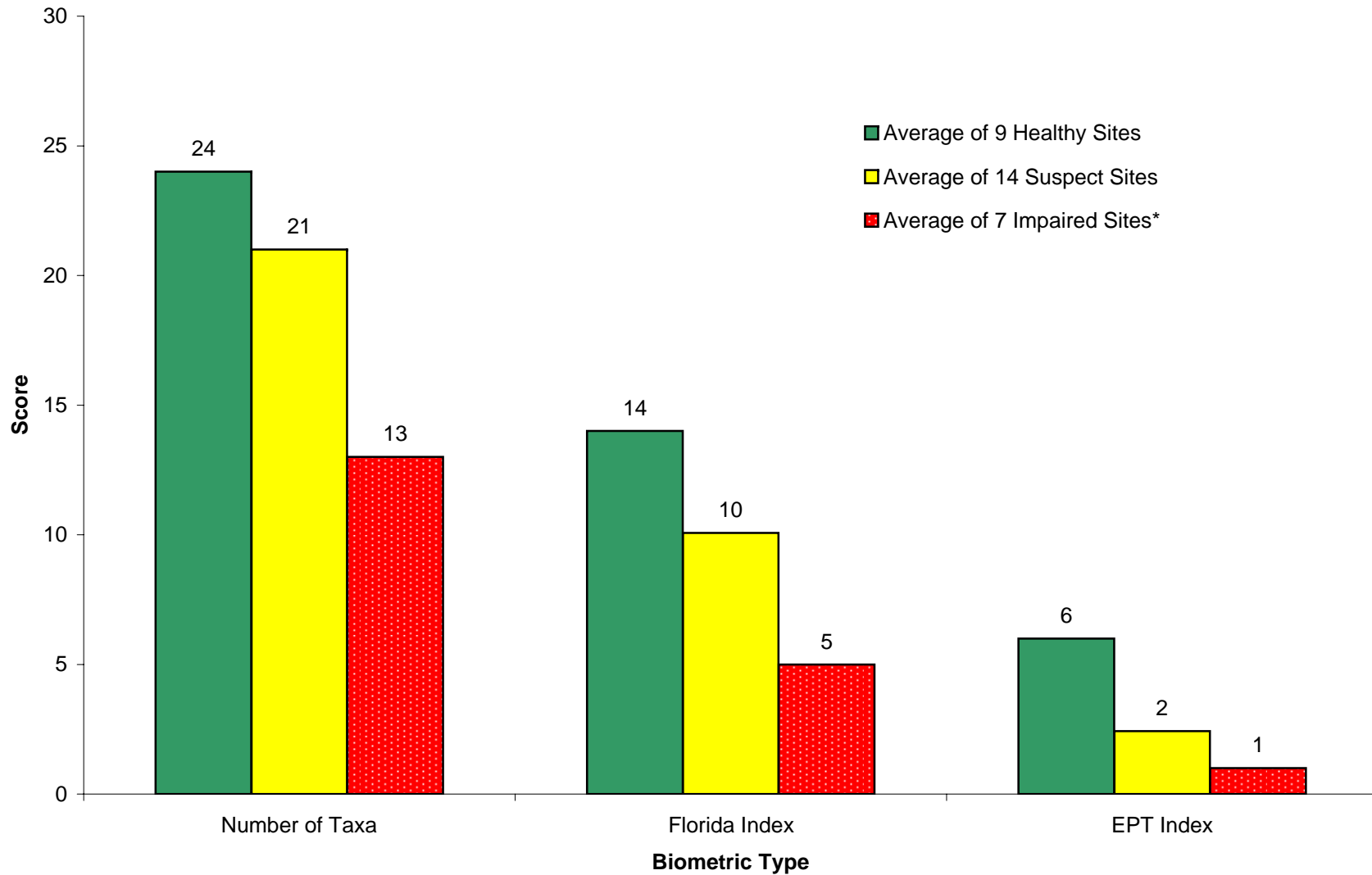
*Impaired sites excluded due to previous drought: LMONT, DRC, DM, LHT53, and LHTW26.

Figure 3
Comparison of Overall Habitat Assessment Scores for Alachua County Creeks



*Impaired sites excluded due to previous drought: LMONT, DRC, DM, LHT53, and LHTW26.

Figure 4
Comparison of Biometric Diversity Scores for Alachua County Creeks



*Impaired sites excluded due to previous drought: LMONT, DRC, DM, LHT53, and LHTW26.

Stream Biorecognition Results, Alachua County, Florida 2000 - 2003