



Degree of Confinement of the Floridan Aquifer System Alachua County, Florida

Legend

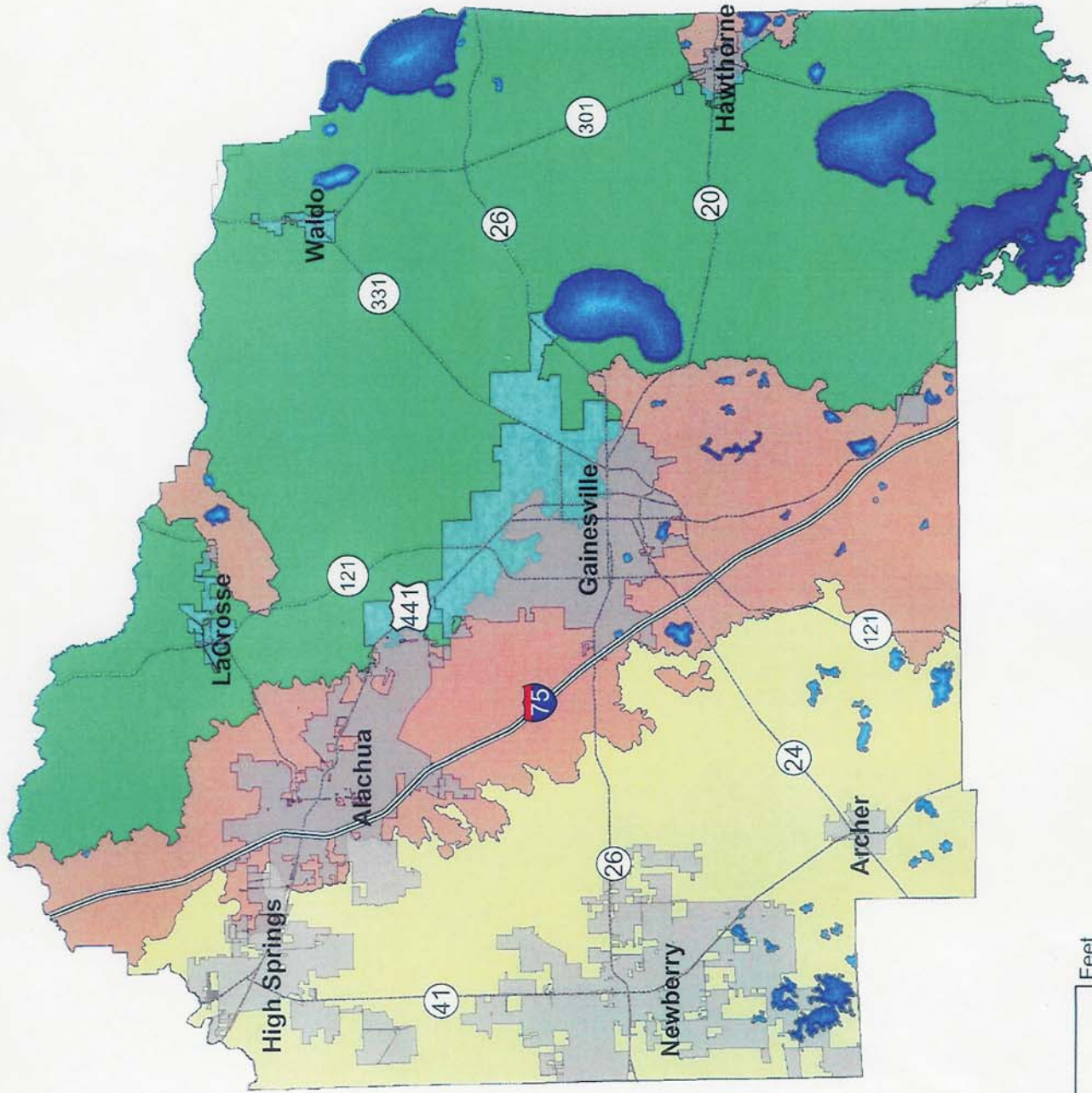
Hydrogeologic Regions

- CONFINED
- PERFORATED
- UNCONFINED
- Lakes
- City Boundaries
- Interstate
- Major Roads

CONFINED ZONE - A region of higher elevations underlain by at least 10 feet of clays or clayey or clayey sands which form an aquitide to the Floridan Aquifer System.

PERFORATED ZONE - Primarily confined with numerous sinkholes allowing hydrologic access to the Floridan Aquifer System.

UNCONFINED ZONE - A region of low and flat terrain where porous sands overlie the Floridan Aquifer System.



DISCLAIMER: This map and the spatial data it contains are made available as a public service, to be used for reference purposes only. The Alachua County Environmental Protection Department provides this information AS IS without warranty of any kind, implied or expressed, regarding accuracy, completeness, or fitness of use. The quality of the data is dependent on the various sources from which each data layer is obtained.