



Alachua County Forever

Program Summary

May 8, 2012



Vital Statistics

	Alachua County Forever		Wild Spaces Public Places	
Referenda Approved	11/7/2000	\$29 million	11/7/2008	\$13 million
Average Annual Impact:	\$ 29.92	20 years	\$45.00	2 years
First Acquisition (Mill Creek - Lybass)	11/8/2002			
	239,500 acres			
Nominated by the Public (to date)	169 applications			
Acquisition List (Approved by the BoCC)	53,147 acres			
Protected by ACF and Partners	21,474 acres			
Remaining on A List	29,823 acres			
Estimated Value *	\$ 133,573,212			
Remaining in Nomination Pool	186,353 acres			
Estimated Value *	\$ 834,661,545			



Santa Fe River

*Based on past values

Acquisitions and Partnerships

Number of Acquisition Lists projects conserved:	56	44	with County funds
Acreage conserved:	21,474	17,948	with County funds
Total Purchase Price:	\$ 96,180,604	\$ 73,856,742	with County funds
County Share: \$ 37,265,687	Partner Share: \$ 58,914,917	61% of total	
Remaining Acquisition Cash on hand: *	\$ 3,905,776		
<i>*this total excludes \$2M set-aside for capital improvements</i>			
Under Contract	\$ -	-	acres

Stewardship and Recreation

	Number	Acreage	% of total acreage
Sites managed by Alachua County:	21	10,624	49%
Sites managed by Partners:	35	10,850	51%
14 Sites Open; (7080 ac)	16 more to be opened within 5 years; (9027 ac)	3 Sites Open by appt; (308 ac)	
10 Conservation Easement Sites; (1401) ac and only 1 site closed; (47) ac			
Stewardship Costs Offset since 2008:	\$ 1,237,180		



Operating Expenses (general fund)

Total General Fund Expenses:	\$ 3,938,696
Total Purchase Price of Land:	\$ 73,856,742
Overhead: <i>As a percent of the purchase price</i>	5.33%

Impact on Tax Base & Ad Valorem Revenue

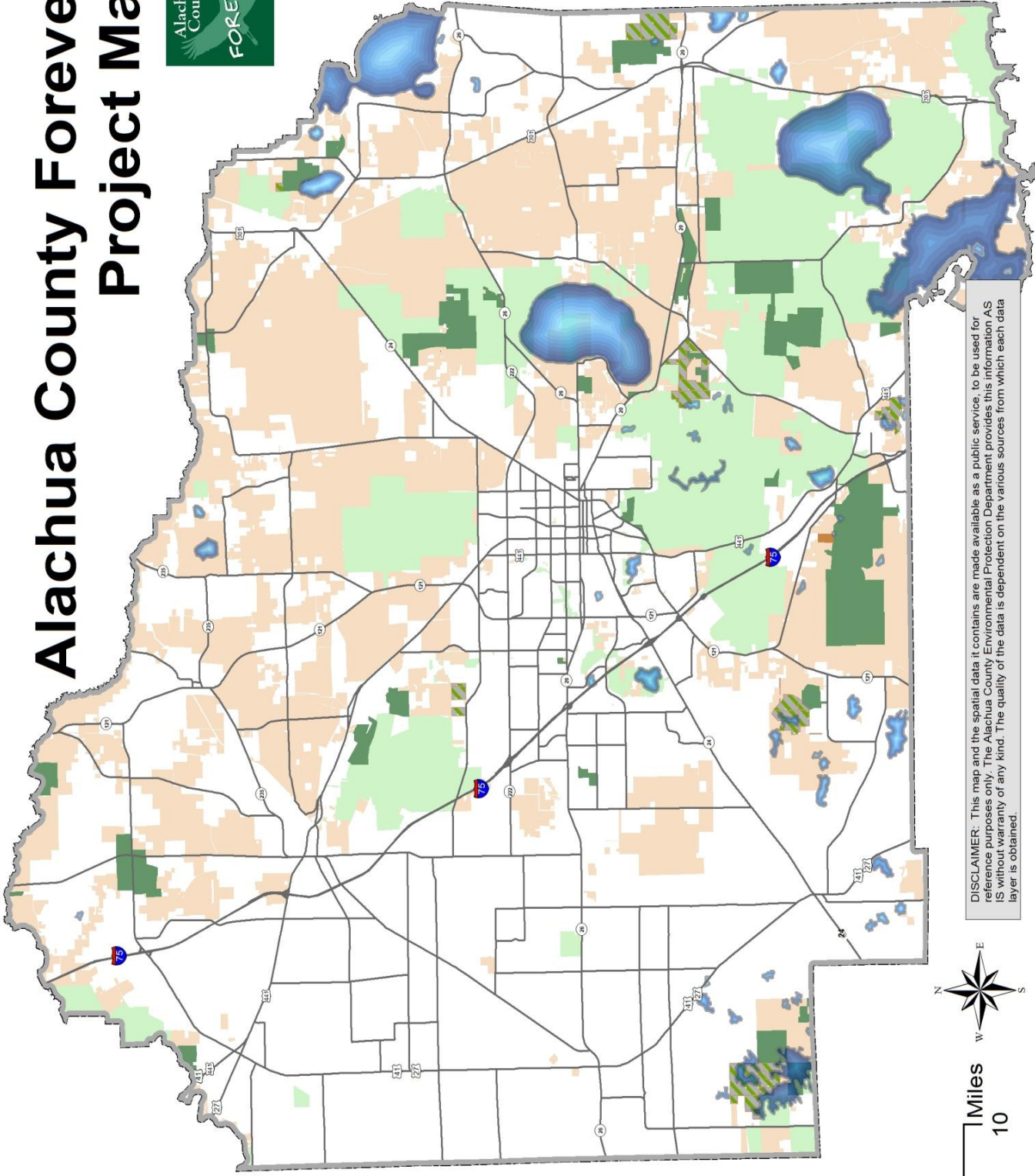
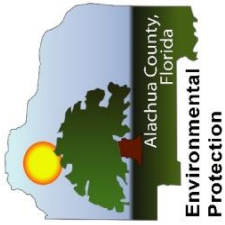
Certified Tax Roll (2010)	\$12,021,109,996	Barr Hammock
Taxable Value of Acquisitions (Property Appraiser)	\$ 3,952,300	0.03% of Tax Base
Decreased Total Tax Revenues (County only)*	\$ 86,493	0.03% of Tax Revenues
<i>* includes General Fund and MSTUs</i>		
Per day Average increase in tax base since 2001	\$ 1,649,619	
Days to replace taxable value of purchases	2	
Days to replace Just Value of purchases	17	
Days to replace Purchase Price	45	

Alachua County Forever
 Alachua County Environmental Protection
 400 West University Ave. Suite 106. Gainesville, FL 32601
 Ramesh P. Buch, Program Manager
 Phone: 352-264-6800
 Website: <http://www.alachuacountyforever.us>

[Alachua County Commission](#)
 Paula M Delaney, Chair
 Mike Byerly, Vice-Chair
 Lee Pinkoson
 Susan Baird
 Winston Bradley

[County Manager](#)
 Richard Drummond
[Environmental Protection](#)
 Chris Bird, Director

Alachua County Forever Project Map



Legend

- Nominated
- Acquired
- Leveraged
- Under Contract
- Other Conservation Lands



Version Date: April 12, 2012 RPB

DISCLAIMER: This map and the spatial data it contains are made available as a public service, to be used for reference purposes only. The Alachua County Environmental Protection Department provides this information AS IS without warranty of any kind. The quality of the data is dependent on the various sources from which each data layer is obtained.