



Community Update

May 29, 2009

A Report on the Activities of Aalachua County Government

Click to Subscribe

Contents	Page
Stimulus Summit	2
Foster Grandparents	2
Charter Review	3
Stormwater Meeting	3
Obesity Summit	4
Hunger Summit	4
Outreach Award	5
Wild Spaces Public Places	5
HIV Testing	6
Post Disaster Plan Meeting	6
County Update TV	6
Aalachua County Talks	7
Students Register to Vote	7
Commission Highlights	8
Advisory Boards	10

Community Update is published by the County Manager's Communications Office

Randall H. Reid

Aalachua County Manager

Mark Sexton

Communications Coordinator

Bret Bostock

Community Update Editor and Graphic Designer

Remonda Ceasar

Executive Staff Assistant

Takumi Sullivan

Graphic Designer

Alan Yeatter

Video Production Coordinator

Shelley Samec

Video Production Technician

Aalachua County Board of County Commissioners
Paula Delaney, Lee Pinkoson, Cynthia Moore Chestnut (Vice Chair), Rodney Long, Mike Byerly (Chair)



Cabot/Koppers Offsite Soil Samples

The Aalachua County Health Department has reviewed the results of recent soil samples taken from the easement along the west border of the Koppers industrial site and in street rights-of-way approximately 100 feet west of the Koppers site. Levels of dioxins, arsenic, and benzo(a)pyrene in some surface soil samples tested are above the State residential standards.

The US Environmental Protection Agency is the lead agency for environmental monitoring and clean-up of the Cabot/Koppers Superfund site and has indicated they will require the responsible parties to conduct additional sampling to further define the area and extent of contamination. The Health Department will continue to evaluate the health risks as more test data becomes available.

The Aalachua County Health Department will continue to work with Aalachua County, and the City of Gainesville to inform citizens about health risks associated with this issue. The three agencies are working to schedule a public meeting in the near future.

While the preliminary test results do not indicate an immediate health hazard to area residents, the Health Department recommends the following precautions:

Children should avoid playing in the 15'-20' City of Gainesville easement just west of the Koppers facility western boundary fence between NW 26 Avenue and NW 30 Avenue. Children under the age of six are at a higher risk of exposure from incidental ingestion (swallowing).

Area residents should practice good general hygiene including hand washing with soap and water after contact with bare soil.



To view the soil the soil sampling results [click here](#).

For more information, contact Aalachua County Health Department Environmental Health Director Anthony Dennis at 352-258-0257.

For toxicology information, contact the Florida Department of Health, Health Assessment Team Leader Randy Merchant at 850-245-8444 ex. 4240.

To contact Scott Miller, United States Environmental Protection Agency Section Chief in charge of this Superfund Site project, call 404-562-9120.



Cabot/Koppers Superfund site

Large Turnout at Alachua County Economic Stimulus Summit

Despite rainy weather, an Economic Stimulus Summit hosted by the Alachua County Board of County Commissioners experienced heavy participation as community leaders and local stakeholders came out to hear State and Federal officials discuss the ins-and-outs of obtaining stimulus funding made available through the American Recovery and Reinvestment Act of 2009.

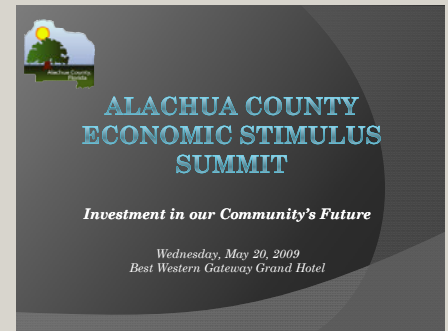
165 people from across Alachua County gathered at the Best Western Gateway Grand Hotel in Gainesville to join in the event, which was organized by County officials for the purpose of disseminating information intended to maximize the flow of stimulus dollars into Alachua County. Representatives from public and non-profit agencies were given the opportunity to learn how to effectively identify and apply for stimulus funding, as well as being given the chance to network with their peers to discuss opportunities for forming partnerships on projects benefiting the community.

Among the various State and Federal agencies represented at the Summit were FloridaWorks, FDOT, the US Department of Agriculture – Rural Development, the Florida Department of Community Affairs, the US Small Business Administration, and the Florida Agency for Healthcare Administration. Alachua County Office of Management and Budget staff were present to provide information on grant research and application methods which participants could use to identify and obtain stimulus funding.

County officials deemed the Economic Stimulus Summit a success overall, and pointed to the large turnout as an indication of how much interest has been generated throughout Alachua County in the Federal Stimulus. Alachua County Economic Stimulus Coordinator Doug Drymon commented: "When an Economic Stimulus Summit was first discussed back in March, there were some people who wondered if it would be necessary to plan for more than 50 people attending. The fact that more than 160 people chose to come to the Summit is an indication of just how important this subject has become in the last several months."

“The fact that more than 160 people chose to come to the Summit is an indication of just how important this subject has become in the last several months.” - Doug Drymon, Alachua County Economic Stimulus Coordinator

Click on image to view the Economic Stimulus Summit Presentation



Foster Grandparent Volunteers Needed

The Alachua County Foster Grandparent Program is currently seeking interested seniors to serve special-needs children in our community, especially in local child care centers and after-school programs. The next training session for new volunteers will be held June 29 thru July 10, 2009. Alachua County residents ages 60 and over who live on a limited income are encouraged to apply. Volunteers serve 15-40 hours per week, working one-on-one with special-needs children in schools, after-school programs, and other nonprofit organizations throughout the County.

In return for their service, volunteers receive an hourly stipend of \$2.65, a daily meal, assistance with transportation, an annual physical examination and supplemental insurance.

For more information, call 352-264-6758.



County Manager Randall H. Reid speaking at the Economic Stimulus Summit

County Commission to Appoint Charter Review Commission

The County Commission is urging citizens to engage in the Charter Review process. Every ten years, eleven to fifteen Alachua County citizens are appointed by the Commission to review Alachua County's Home Rule Charter. Known as the Charter Review Commission (CRC), the group will decide by majority vote if Charter amendments or revisions should be placed on the general election ballot for November of 2010.

The commitment of time to the CRC will be substantial. Applicants should carefully consider their ability to attend meetings at least monthly starting in October of 2009 and continuing through July of 2010.

"Thomas Jefferson believed an informed and engaged citizenry was democracy's greatest safeguard,"



Special Stormwater Meeting

The Public is invited to attend a special County Commission Meeting on Stormwater on Tuesday, June 2, 2009 at 1:30 p.m. in the County Administration Building's Jack Durrance Auditorium, located at 12 SE 1st Street, Gainesville.

County staff will be presenting the findings and status update of the Stormwater Master Plan and seeking direction from the Board on whether or not it wishes to proceed with, fund, and implement a Stormwater Management Program. The meeting will be available live on Channel 12 and on the County's [Video on Demand](#) site. The meeting will be replayed on Ch. 12 and archived and available "on demand" on the web.

In June of 2005, Public Works staff presented the need for a countywide Stormwater Management Program to the Board. The presentation outlined stormwater management, and funding issues. In 2006, the Board of County Commissioners funded the initiation and setup of the Stormwater Program and the development of a Stormwater Master Plan.

The Stormwater Master Plan includes an inventory of existing facilities, a countywide stormwater model, and

The Preamble of the Alachua County Home Rule Charter states:

The citizens of Alachua County, Florida, believing that governmental decisions affecting local interests should be made locally rather than by the state, and, in order to bring to the county the full home rule benefits afforded by the constitution of the State of Florida to charter counties, do ordain and establish this home rule charter for Alachua County, Florida.

said Alachua County Manager Randall H. Reid, "As our Charter is our local constitution, the Charter Review Commission is a very powerful way for citizens to participate in their government."

To view the Home Rule Charter [click here](#)

To fill out and submit an application, [click here](#). The deadline for application to the CRC is July 31, 2009.

For more information, contact the Advisory Board Program Coordinator, Mary Lowry, at (352) 264-6904.

an assessment of needs and problem areas with conceptual improvement concepts for those areas. From the needs assessment and projected costs for these improvement concepts, an analysis was completed to project funding needs for a stormwater management program. The Stormwater Master Plan also includes funding options should the Board wishes to implement the Stormwater Management Program.

To view the Stormwater Management Program Update presentation [click here](#).

For more information, contact Rahim Harji at 352-374-5245, extension 314 or e-mail him at rharji@alachuacounty.us.

**CALL
BEFORE YOU
CLEAR!**



If your property is within unincorporated Alachua County, a site evaluation by county staff may be required prior to clearing, underbrushing, tree removal or other development activities in or adjacent to natural areas.

Contact the Alachua County
Environmental Protection Department
to schedule a site visit **before** commencing work

CALL 352-264-6800

M-F 8:30 am - 5:00 pm

<http://www.alachuacounty.us/epd/nr>

Commissioner Chestnut Participates in D.C. Obesity Summit

County Commissioner Cynthia Moore Chestnut recently joined 200 other public officials from across the country to discuss policies to advance healthy eating and increased physical activity for America's children.

Commissioner Chestnut represented the National Association of Counties (NACo) at the Childhood Obesity Prevention Summit, held from May 7 to May 8, 2009 in Washington, D.C., hosted by Leadership for Healthy Communities (LHC). NACo is one of 11 national groups representing state and local governments and schools working in partnership with LHC to reduce childhood obesity.

"I was honored to represent the nation's counties at the Childhood Obesity Prevention Summit," Commissioner Chestnut said. "As county officials, it is critical that we work together with all stakeholders in our communities to encourage healthy eating and active lifestyles for children and families."



County Commissioner
Cynthia Moore Chestnut

indirect costs such as reduced productivity and absenteeism."

For more information, contact Alachua County Commissioner, Cynthia Moore Chestnut at 352-264-6900.

According to the National Association of Counties, "Nearly 33 percent of children and adolescents and about 65 percent of adults in the United States are overweight or obese. This health crisis placing them at increased risk of developing type 2 diabetes, heart disease and other serious, chronic problems. Beyond the personal health toll, overweight and obesity put added pressure on an already overburdened health care system. Studies estimate that the obesity epidemic is costing the country more than \$117 billion per year in direct medical expenses and

Hunger Summit II

Alachua County and the City of Gainesville are conducting "Hunger Summit II" on June 3, 2009 from 8:30 a.m. until noon at Trinity United Methodist Church located at 4000 NW 53rd Avenue, Gainesville. Co-

Chaired by Alachua County Commissioner Rodney J. Long and Gainesville Mayor Pegeen Hanrahan, the event is sponsored by the Alachua County Commission, the

Gainesville City Commission, the Alachua County School Board, The Florida Department of Children and Families, the Alachua County Medical Society, and United Way of North Central Florida. Bruce Delaney, Executive Director, Florida Natural Resources Leadership Institute, is the summit facilitator.

Hunger Summit II will include the presentation of the Alachua County/City of Gainesville Hunger Abatement Plan. The plan addresses local food and nutrition providers including programs serving elders as well as USDA programs such as Women Infants and Children, School Meals, Summer Youth Food Program, Food Stamps, and Farmers Markets.

Registration begins at 8:30 a.m. Refreshments will be served.

For more information, contact Alachua County Poverty Reduction Director John Skelly at 352-264-6700.



Don Winstead, Deputy Secretary of DCF
speaking at last year's Hunger Summit.

Mayor Pegeen Hanrahan, County
Commissioner Rodney Long, and USDA
FNS Administrator at last year's Hunger
Summit.

Participants in last year's Hunger Summit.

EPD Wins Outreach Award

The Alachua County Environmental Protection Department (EPD) won the People's Choice Award for two public service announcements encouraging people to pick up pet wastes at the National Nonpoint and Stormwater Outreach Conference in Portland, Oregon on May 13, 2009.

"These public service announcements are a key element of Alachua County EPD's public outreach campaign designed to encourage citizens to scoop, bag, and trash pet wastes at home and around the community," said Chris Bird, Director of Alachua County EPD. He continued saying, "I want to recognize Stacie Greco, EPD Senior Environmental Specialist, for her work in obtaining funding for, designing, and implementing the pet waste campaign. In addition, Group 5 and Associates has done an excellent job creating the campaign materials, including the public service announcements. Finally, I would like to thank the Gainesville Clean Water Partnership for funding this important campaign to help reduce bacteria levels in our creeks."

Many of the creeks in Alachua County are listed as Impaired Waters by the Florida Department of Environmental Protection, due to their high levels of fecal coliform bacteria. Pet waste is a known source of

bacteria that can be reduced by simply changing behaviors. EPD's campaign uses innovative social marketing techniques; such as, providing free bag dispensers to attach to leashes and installing pet waste disposal stations in public parks, to help citizens overcome the barriers of cleaning up after their pets. Many local veterinarian offices are participating in the campaign by displaying EPD's posters and distributing pet waste pamphlets and magnets to their clients.

EPD is also working with the Alachua County Health Department, the City of Gainesville Public Works Department, and Gainesville Regional Utilities to identify and reduce additional sources of fecal coliform bacteria to our creeks.

For more information, or to view the commercials, [click here](#) or call Chris Bird at 352-264-6801.



Wild Spaces & Public Places Oversight Committee

A "Wild Spaces and Public Places Citizen Oversight Committee" is being formed as specified in the ballot language for last November's Wild Spaces & Public Places Environmental Lands, Parks and Recreation One-Half Percent Sales Tax referendum. The purpose of the committee is to assure citizens and elected officials that funds approved through the referendum are expended only for:

Parks and recreation facilities that were on approved project lists attached to the Sales Surtax Ordinance approved by the Alachua County Commission

Conservation land purchases consistent with referendum language

The committee will be made up of five voting members and three alternates. Alachua County and the City of Gainesville will appoint two members each. The Alachua County League of Cities will appoint one member. Each entity will appoint one alternate. Applicants must be Alachua County residents and must not hold elected office.

For more information, contact Alachua County Program Coordinator Mary Lowry at 352-264-6904.

Interested citizens can apply online by clicking one of the following:

Alachua County Board of County Commissioners, [click here](#).

City of Gainesville: (must be City of Gainesville residents) [click here](#).

To apply for the League of Cities slot, send an email to the Chair of the Alachua County League of Cities at louie45@gmail.com

National HIV Testing Day

On Monday June 22, 2009, from 5:30 p.m. to 8 p.m., the Alachua County Health Department will be observing "National HIV Testing Day." This year's theme is "Take the Test, Take Control." In support of this important public health initiative, the Alachua County Health Department (224 SE 24th Street, Gainesville) will be providing free HIV/STD testing in addition to offering free and confidential HIV counseling. The free tests utilize the OraQuick Advance finger stick test and citizens will only have to wait 20 minutes for their HIV results.

Please call 352-334-7960 to schedule a free and confidential

HIV OraQuick test. Other Sexually Transmitted Disease information and screening will also be available.

For more information, [click here](#).

The goal of the Alachua County Health Department is to promote, protect, maintain and improve the health and safety of all citizens and visitors.

If any accommodations are needed for persons with disabilities, please contact the Equal Opportunity Office at (352) 374-5275 or (352) 374-5284 TDD.



Post Disaster Redevelopment Plan Meeting

The next Alachua County Post Disaster Redevelopment Planning Process meeting will be Wednesday, June 3rd, from 6:00 p.m. - 8:00 p.m. at the Alachua County Health Department Auditorium, 218 SE 24th Street, Gainesville, Florida 32641.

The purpose of this meeting will be to review the planning process, and to discuss the makeup and roles of the executive and working committees. Additionally, the group will review the preliminary Hazard Vulnerability Assessment and begin identifying community issues that will impact the plan or result from the plan's implementation.

To make this planning process successful, participation is needed from all sectors of the community, including the local governments, major industries, business and community groups, educational institutions and the public.

For more information, about the Post-Disaster Redevelopment Plan or this upcoming meeting, contact David Donnelly at dad@alachuacounty.us or 352.264.6500.

County Update TV on Channel 12



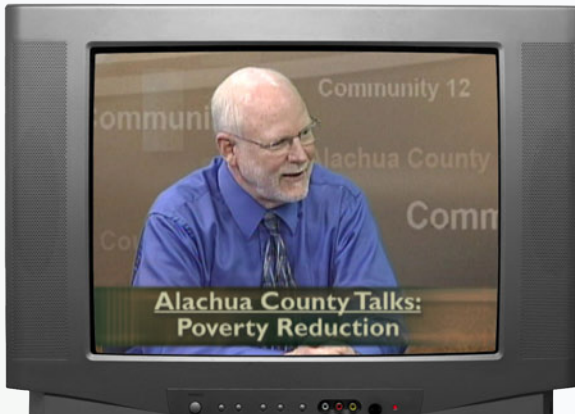
County Update is a half hour news program providing in-depth information on County programs, services and initiatives. County Update airs on **Community 12** and the **Video On Demand** website. Click on the image to view this month's show.

Features This Month

- Victims' Rights Week Candle-lighting Ceremony
- Scoop the Poop
- Paws on Parole program
- County Acquires Levy Prairie
- Comm. Long receives Nat. Assn. of Social Workers Award
- The Life of S. Clark Butler

What's On "Alachua County Talks"

Check out the latest editions of Alachua County Talks on Community 12 TV by viewing the [Channel 12 Show Schedule](#). Or click on the images to the right to view streaming video of the episodes.



Click above to watch Alachua County Poverty Reduction Director John Skelly talk about Poverty Reduction Programs in Alachua County.



Click above to watch Alachua County Sustainability Manager Sean McLendon discuss sustainability in Alachua County.

Supervisor of Elections Register Over 200 High School Students to Vote

Over 200 high school students registered to vote through the High School Voter Registration and Education Program. This program is a partnership between the Alachua County Supervisor of Elections Office and Alachua County high schools which allows hands on voting experience while encouraging students to exercise their right to vote once they become eligible.

The Elections Office recently visited the county's high schools registering and pre-registering eligible students to vote and educating students on the importance of their participation in democracy. Students also learned about the electoral process and were provided an opportunity to practice their new voting skills by using demonstration ballots and the optical scan voting equipment used in County elections. Students were provided voter education materials along with "I

Registered to Vote" and "Future Voter" stickers.

Over 45 students elected to become even more involved by signing up to serve as poll workers on Election Day.

"I'm really excited by the response we've received this year from our high school students. Not only are they eager to vote in the next election, but they want to participate in the experience of actually running the election itself."

Schools visited during this campaign include Buchholz, Santa Fe, Hawthorne, Newberry and the Professional Academies Magnet at Loften School.

For more information on this program or to become a poll worker, please contact the Supervisor of Elections at (352) 374-5252.



Supervisor of Elections Outreach Director Kim Barton helping students at Santa Fe High School learn to vote

Healthcare for the working uninsured

Alachua County's
CHOICES
Health Services
352-264-6772 www.ACchoices.com

Commission Highlights

May 26, 2009 Board Meeting



Commissioner Paula M. DeLaney
Commissioner Lee Pinkoson
Vice Chair Cynthia Moore Chestnut
Commissioner Rodney J. Long
Chairman Mike Byerly

Video:



Part 1



Part 2

Presentations, Proclamations and Recognitions

Announcements

Mark Sexton, Communications Coordinator

Attachment: [Announcements](#)

Young Marine Sergeant Major Kayle M. Hill Day

The Board proclaimed Saturday April 25, 2009 as “Young Marine Sergeant Major Kayle M. Hill Day” in Alachua County, Florida.

Attachment: [Young_Marine_Kayle_M_Hill_Day_2009.pdf](#)

Milton Lewis Young Marine Day

The Board proclaimed Saturday June 6, 2009 as “Milton Lewis Young Marine Day” in Alachua County, Florida.

Attachment: [Milton_Lewis_Young_Marine_Day_2009.pdf](#)

The Board accepted the progress update of the Newberry/Cooperstown baseball park project.

Attachment: [Key Points Regarding the Cooperstown Dreams Park Project in Newberry.pdf](#)

County Manager's Report

Attachment: [County Manager's Report](#)

Board approved/confirmed the action of the Local Planning Agency to transmit proposed EAR to Dept of Community Affairs2

Commission Highlights

Presentations, Proclamations and Recognitions continued

Commission Comments

Attachment: [Commission Comments](#)

Chair Byerly asked that DOT be contacted in regards to an update on the contract for the replacement of the dead trees on Williston Road

Special Exception Resolution

The Board adopted Resolution Z-09-04, a request for a special exception to allow a 2,200-foot long private landing strip in an Agriculture zoning district on approximately 155 acres.

Attachment: [Resolution_for_ZOX0109.PDF](#)

Attachment: [ZOX0109_Powerpoint_Presentation.pdf](#)

Attachment: [ZOX0109_Supplemental_Background_Information.PDF](#)

Attachment: [ZOX0109.pptx](#)

Attachment: [ZOX0109_Citizen_Comments.PDF](#)

Attachment: [ZOX0109_Background.pdf](#)

Attachment: [ZOX0109_Staff_Report.pdf](#)

Advisory Board Appointments

Mr. Stephan Tuchman was appointed to the Community Agency Partnership Program as a citizen-at-large to a term ending February 28, 2011.

Alachua County Advisory Boards

Get Involved

The Alachua County Commission is committed to citizen involvement on its advisory boards and is soliciting applications for the following vacancies:

Alachua County Housing Authority: One Alternate Tenant-Commissioner; this position requires residency in public housing or that applicant is on the Alachua County Housing Authority's Section 8 Voucher Program, *one citizen-at-large*

Alachua County Historical Commission: Four citizens-at-large

CHOICES Health Services Advisory Board: One CHOICES program participant (Alternate), one Nurse, *one citizen-at-large*

Citizens Disability Advisory Committee: Four citizens-at-large

Community Agency Partnership Program: One citizen-at-large

Criminal Justice, Mental Health & Substance Abuse Grant Planning Committee: One director of a local substance abuse treatment program, *One director of a community mental health agency*

Environmental Protection Advisory Committee: One alternate, *three citizens-at-large*

Fair Housing Human Rights Board: One residential rental manager, *one citizen-at-large*

Health Care Board: One low-income health care consumer

Health Facilities Authority: One alternate

Local Planning Agency and Planning Commission: *One citizen-at-large*

Recreation and Open Space Advisory Committee: *Four citizens-at-large*

Regional Transit System Advisory Board: One citizen with a disability or Senior Citizen

Victim Services and Rape Crisis Center Program Advisory Council: One citizen-at-large, one alternate, *five citizens-at-large*

Wild Spaces & Public Places Citizen Oversight Committee: Two citizens-at-large, one alternate

[Click here for an application](#)

Applications are also available at the County Manager's Office on the 2nd Floor of the County Admin. Building, 12 SE 1st St., Gainesville. For more info., call 352-264-6904.