

ALACHUA COUNTY, FLORIDA



CITIZEN'S
FINANCIAL REPORT
FISCAL YEAR ENDED SEPTEMBER 30, 2007

Citizen's Financial Report

ALACHUA COUNTY, FLORIDA

FOR THE FISCAL YEAR ENDED SEPTEMBER 30, 2007

Prepared by

**The Honorable J. K. "Buddy" Irby
Clerk of Circuit Court**

**Todd Hutchison, C.P.A., C.G.F.O.
Director of Finance**

ALACHUA COUNTY, FLORIDA

BOARD OF COUNTY COMMISSIONERS

(As of November 13, 2007)

Rodney J. Long – Chairman – District 5

Mike Byerly – Vice Chairman -District 1

Cynthia Moore Chestnut – District 4

Paula M. DeLaney – District 3

Lee Pinkoson – District 2

COUNTY MANAGER

Randall Reid

COUNTY ATTORNEY

David Wagner

CLERK TO BOARD OF COUNTY COMMISSIONERS

J.K. "Buddy" Irby

CONSTITUTIONAL OFFICERS

CLERK OF CIRCUIT/COUNTY COURTS – J.K. "Buddy" Irby

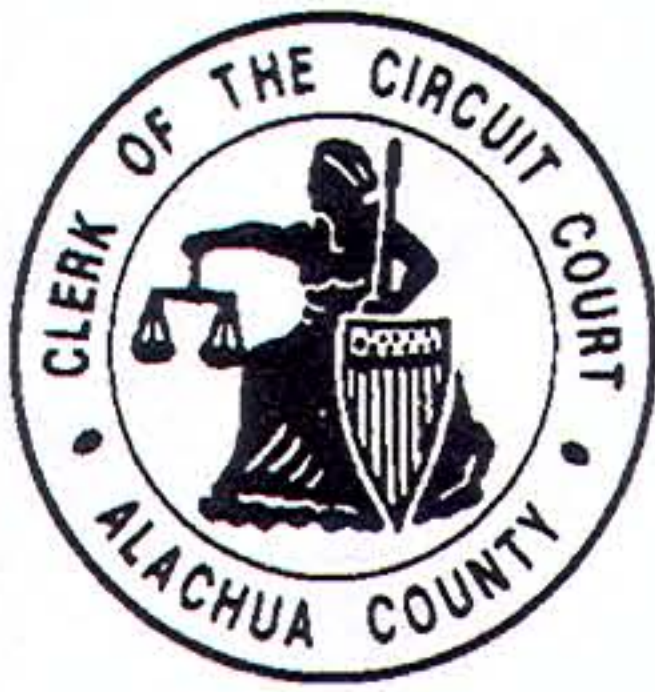
TAX COLLECTOR – Von Fraser

SHERIFF – Sadie Darnell

PROPERTY APPRAISER – Edward A. Crapo

SUPERVISOR OF ELECTIONS – Pam Carpenter

<http://www.alachuacounty.us>



CLERK OF THE CIRCUIT COURT

Alachua County Courthouse

Post Office Box 939

Gainesville, Florida 32602

J.K. "BUDDY" IRBY
CLERK(352) 374-3605

TELEPHONE

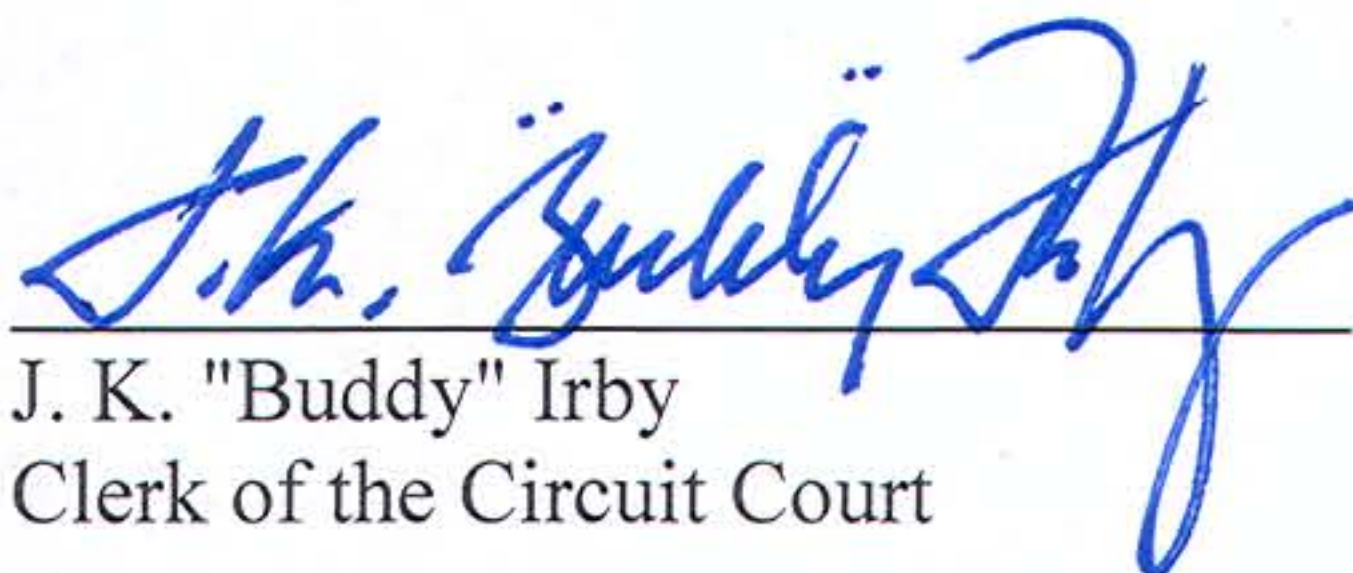
In an effort to better communicate the County's financial picture we are providing this Citizen's Financial Report. In this report we have summarized and compiled information from various sources. The information in this report is produced by the Clerk of the Circuit Court, Finance and Accounting Department and has not been audited by the County's independent auditor.

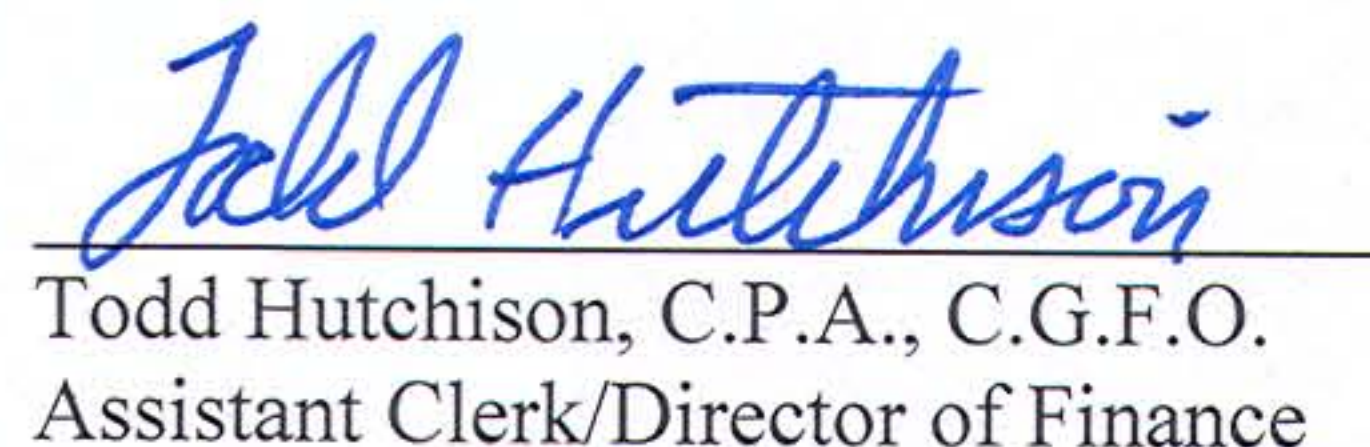
The County's audited Financial Statements, which are presented in accordance with Generally Accepted Accounting Principles (GAAP), are contained in the Comprehensive Annual Financial Report (CAFR) for 2007. The CAFR is included in CD format in the last page of this booklet.

The Audit Report and CAFR are available on request from the Clerk of the Circuit Court, Finance and Accounting Department, 4th Floor, 12 Southeast First Street, Gainesville, Florida. A copy of the Audit Report and Comprehensive Annual Financial Report is also available at the Public Library and can also be found online at <http://www.alachuacounty.us/government/clerk/>.

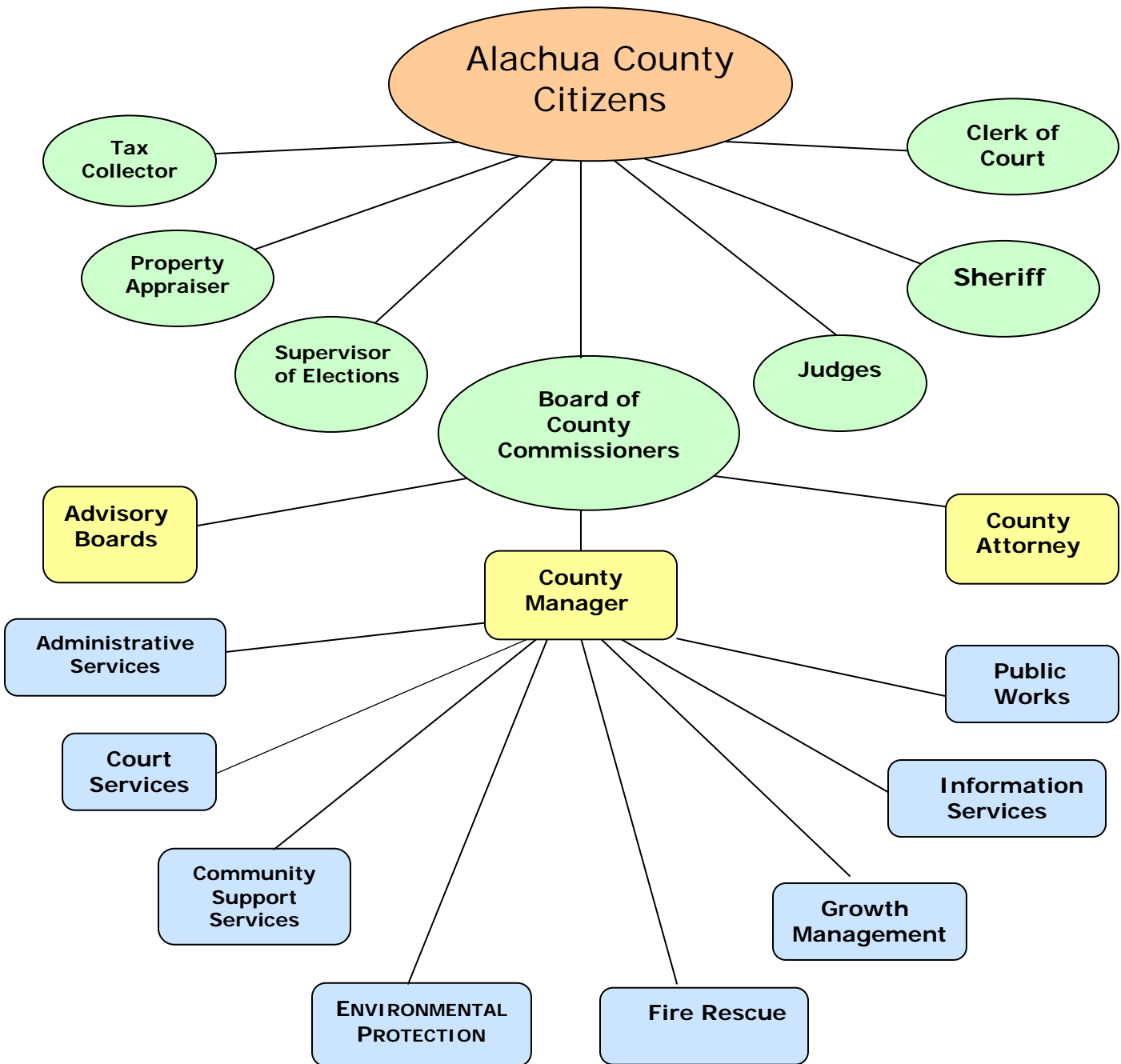
The financial information found throughout this report (unless otherwise noted) includes all funds and fund types of the County (including Constitutional Officers). Transfers, debt proceeds and debt restructuring expenditures have been excluded. In addition, this financial information excludes the Murphree Law Library, the Alachua County Housing Finance Authority, the Alachua County School District and the Alachua County Library District.

We hope that this information will help you understand your government's finances more clearly. Thank you for your interest.


J. K. "Buddy" Irby
Clerk of the Circuit Court


Todd Hutchison, C.P.A., C.G.F.O.
Assistant Clerk/Director of Finance

Alachua County, Florida Organizational Chart



ALACHUA COUNTY, FLORIDA
CITIZEN'S ANNUAL FINANCIAL REPORT
For year ended September 30, 2007

Features

THE COUNTY	1
FORM OF GOVERNMENT	1
REPORTING ACHIEVEMENT	1
ECONOMIC CONDITION AND OUTLOOK	2
DEMOGRAPHICS / ECONOMIC INFORMATION	3 - 5
2007 RESULTS OF OPERATIONS	6
FINANCIAL INFORMATION	7 - 11
PROGRAMS BY DEPARTMENT.....	12 - 13
ELECTED OFFICIALS.....	14
DEPARTMENTS AND SERVICES.....	14-16
ELECTED CONSTITUTIONAL OFFICERS	17-18
MISCELLANEOUS INFORMATION.....	19

The County

Alachua County was established by an Act of the Florida Legislature in 1824 when Duval County was split to form Alachua, Duval and Nassau Counties. Subsequent legislatures further divided Alachua County to establish Levy, Gilchrist, Marion, Putnam and Clay Counties. Since the 1920's, Alachua County has contained approximately 977 square miles.

The County, as used in this report, includes the operations of the Board of County Commissioners, Supervisor of Elections, Clerk of the Circuit Court, Sheriff, Tax Collector, and Property Appraiser. The operations of the separate independent Library Taxing District, School District, Law Library, and Housing Finance Authority are excluded from this report.

Form of Government

The County has a charter government structure approved by referendum of the electors pursuant to the Constitution and laws of the State of Florida. The County's Home Rule Charter became effective on January 1, 1987.

The County operates under the County Manager form of government with a board comprised of five elected members. In addition, there are five Constitutional Officers who are separately elected, including the Clerk of the Circuit Court, Sheriff, Tax Collector, Property Appraiser, and the Supervisor of Elections.

Reporting Achievement

The Government Finance Officers Association of the United States and Canada (GFOA) has given an Award for Outstanding Achievement in Popular Annual Financial Reporting to Alachua County for its Citizen's Financial Report for the fiscal year ended September 30, 2006. The Award for Outstanding Achievement in Popular Annual Financial Reporting is a prestigious national award recognizing conformance with the highest standards for preparation of state and local government popular reports.

In order to receive an Award for Outstanding Achievement in Popular Annual Financial Reporting, a government unit must publish a Popular Annual Financial Report, whose contents conform to program standards of creativity, presentation, understandability and reader appeal.

An Award for Outstanding Achievement in Popular Annual Financial Reporting is valid for a period of one year only. We believe our current report continues to conform to the Popular Annual Financial Reporting requirements, and we are submitting it to GFOA.

Economic Condition and Outlook

Alachua County is a major educational and health care center with a number of associated firms and industries. The County has a population of approximately 247,561 and an unemployment rate of 2.9%. The stability of the County economy is attributable mainly to the University of Florida and the other governmental employers in the area, who provide approximately 50% of the jobs.

Employment Distribution Gainesville MSA		
TITLE	TOTAL	PERCENT
Natural Resources, Mining & Construction	6,100	4.45%
Manufacturing	4,600	3.36%
Trade, Transportation & Utilities	19,100	13.93%
Professional, Business & Information Services	21,000	15.32%
Education & Health Services	22,900	16.70%
Leisure & Hospitality	14,400	10.50%
Government	44,200	32.24%
Other Services	4,800	3.50%
TOTALS	137,100	100%

Source: Florida Agency for Workforce Innovation, 10/07

Excludes Agriculture

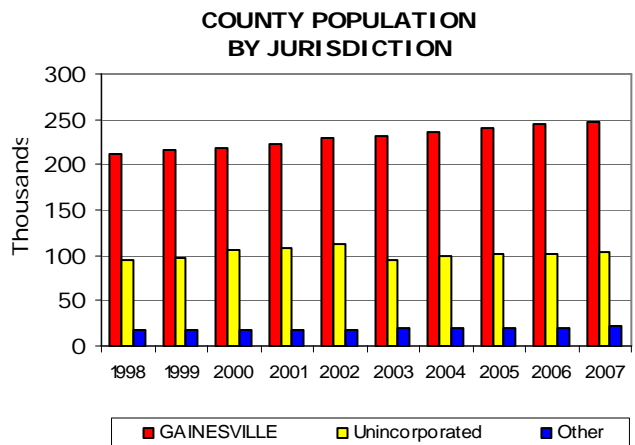
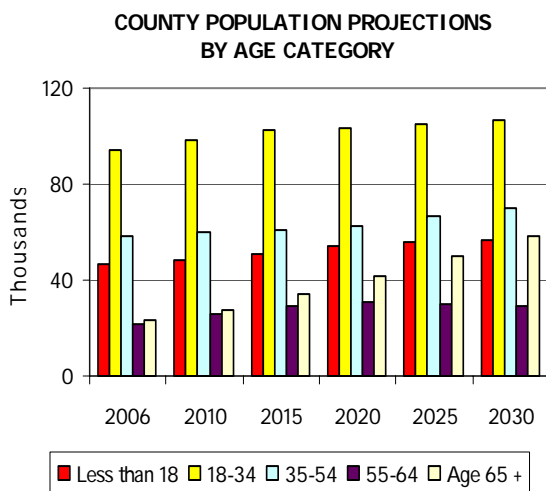
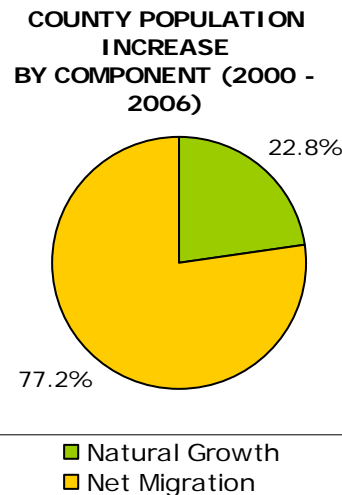
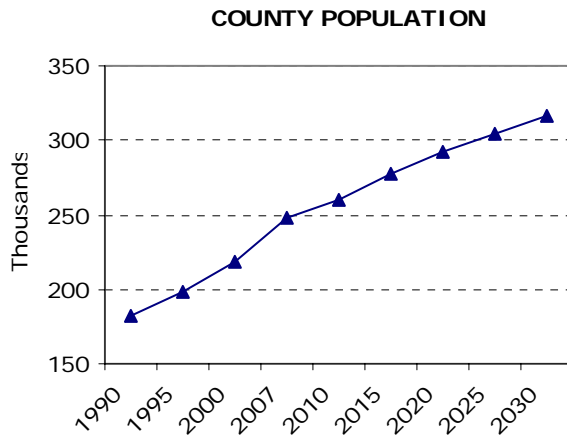
The future economic outlook and employment picture appears to be consistent with recent trends although the economic trends of the Nation and the State have always had some effect on the County's economy.

Alachua County's economic base not only provides employment for local residents, but also for people from several surrounding counties. As a result of lower average wages and salary earnings per job in these communities, many commute outside their county of residence for employment. A recent report declared that approximately 18,000 people commute to Alachua County for work.

Job growth in Alachua County (38%) has outpaced the national average (24%) over the past 15 years per the Census Bureau, but the growth in per capita income has lagged behind the national average during that same period. The City of Gainesville and Alachua County are working to promote businesses that will take advantage of the workforce that possess a bachelor's degree or higher – Gainesville ranks 14th in the nation for that level which means there are potentially a lot of underemployed people here. The increase in the federal minimum wage will also have an effect on future income.

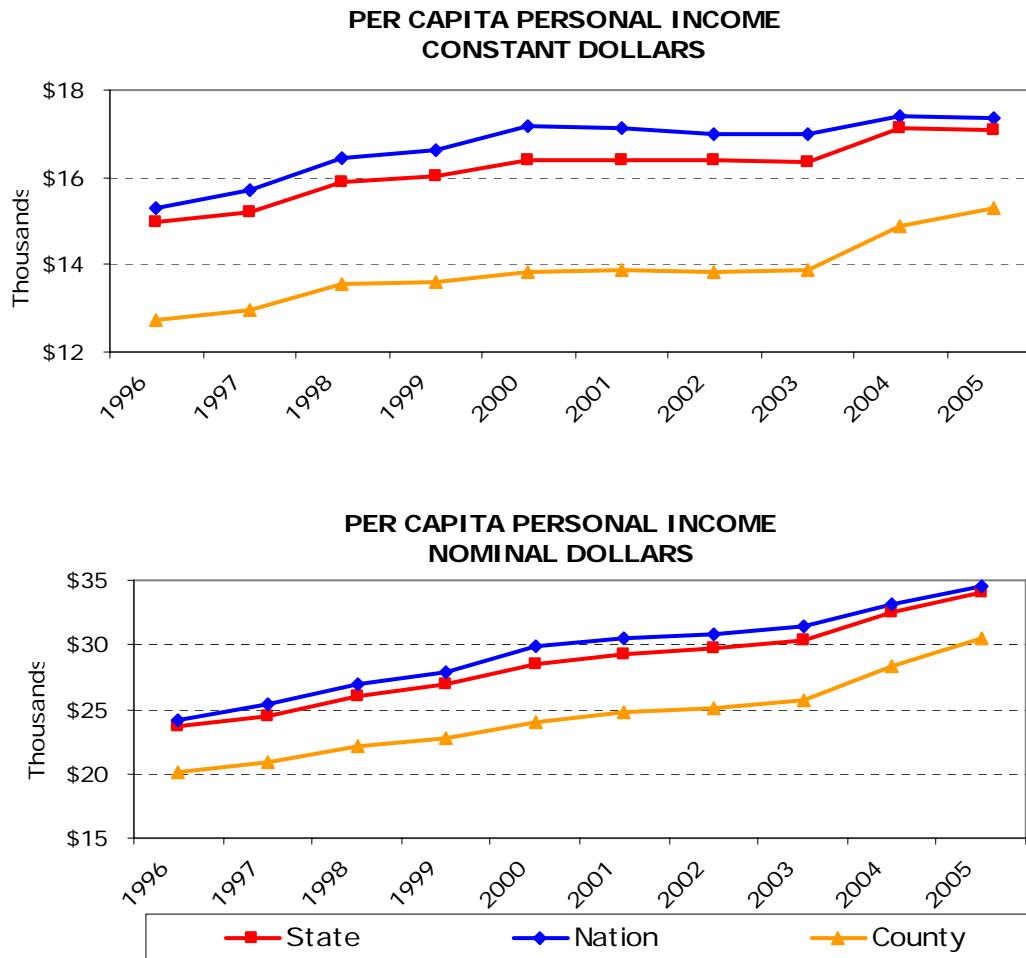
Demographics/Economic Information

It is necessary to look at the County in the context of its environment to understand the County's financial position. The next two pages contain graphs and discussion about the County's economic and demographic environment.



Alachua County's population is increasing at a steady rate. The largest segment of the population continues to be the 18 to 34 age group, but growth in the age 65 and over category is expected to increase at a higher rate than other categories. Over past years, the population of the City of Gainesville has exceeded that of the unincorporated areas due to the annexation that occurred in 2002. The population growth is primarily due to migration from other areas rather than from natural growth due to births. This is similar to the population increases in the State of Florida as a whole.

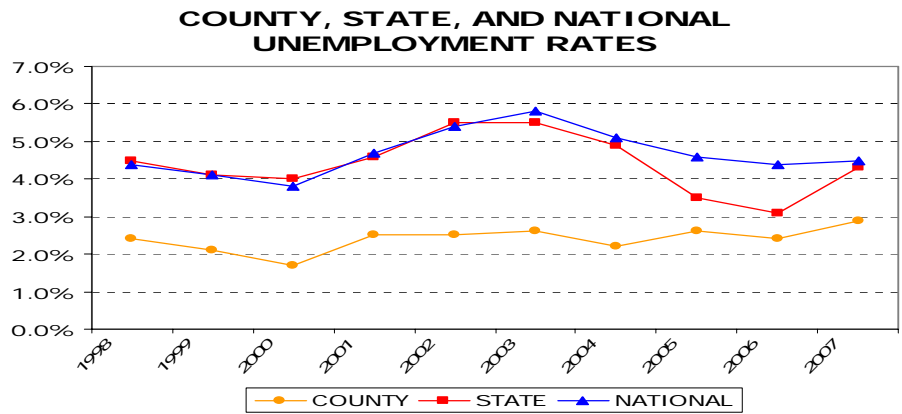
The following two graphs show a ten-year history of personal income per person in Alachua County, the State of Florida, and the United States. The Constant Dollar graph shows the amount of individual personal income in constant dollars, (effects of inflation removed). This shows the true income growth in real (or constant) dollars. The Nominal Dollar graph shows the amount of individual personal income in current dollars. This includes growth in income as well as inflation. In constant dollars, the County's per capita income is \$2,030 less than the Nation and \$1,794 less than the State.



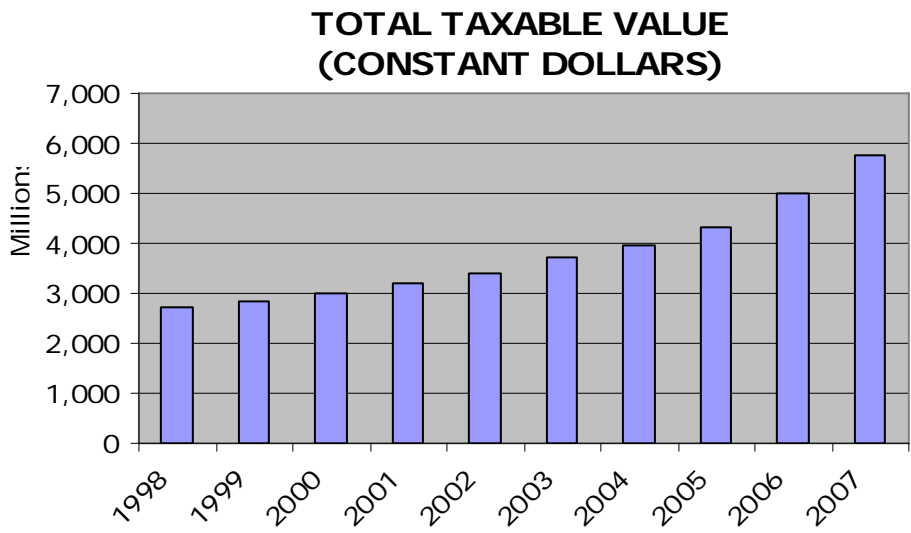
*Most recent data available via the Bureau of Economic & Business Research

Demographics/Economic Information, continued

Business activity and the employment base show a positive trend with the number of jobs increasing from 134,700 in 2006 to 137,100 in 2007 for the Gainesville MSA. The County's unemployment rate is consistently below that of both the State and the Nation. For the past ten years unemployment rates have been very stable in the County.



The total taxable value of residences and businesses has increased steadily for the past ten years. Increases reflect a combination of growth, increase in value, and continued reassessments.



The 2007 Results of Operations

The following represent some services performed during the year.

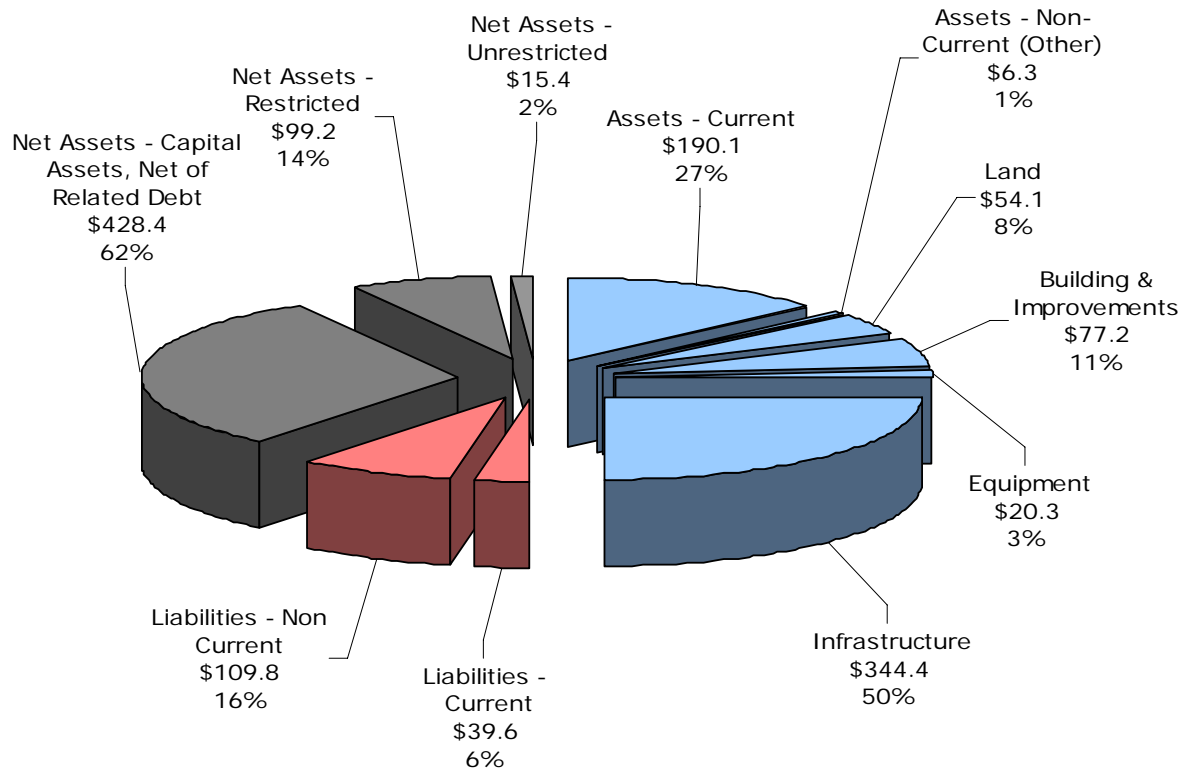
Function/Department	Number of Employees	2007 Per Capita Expenditure	Work Stats and Description	
Rescue	104	\$46.37	Number of calls - Rescue	32,244
			Number of transports	20,141
Fire	111	\$119.71	Number of calls - Fire	11,098
Law Enforcement (includes Sheriff)	673	\$255.86	Average number of inmates per day	1,044
			Number of calls - Sheriff	122,080
Courts	245	\$87.47	<u>Number of Cases Filed</u>	
			Circuit Court	15,436
			County Court	21,933
			Traffic	78,321
			Appeals	324
Warrants	23,260			
Community Support Services	70	\$60.40	Number of clients contacts	282,575
Roads	92	\$101.36	Number of miles maintained - paved	661
			Number of miles maintained - graded	235
			Number of miles paved this year	6
Waste Management	62	\$67.01	Tons of waste processed	193,261
Animal Control	32	\$8.98	Number of animals picked up	8,661

Note: Fire per capita expenditures are calculated using population for the unincorporated area and the cities of Alachua, Archer and Hawthorne.

The following pages contain the 2007 County-wide financial information.

Financial Information

**Alachua County
 Assets, Liabilities, and Net Assets
 (in millions)**



Notes: 1. **Total Assets - \$692.4; Total Liabilities - \$149.4; Net Assets - \$543.0**
 2. The percentage shown at each segment is the percentage of total assets.

The graph above provides an overview of the County's balance sheet for fiscal year 2007. Capital assets (\$496.0 million) comprise seventy-two percent of the County's total assets of \$692.4 million. The County's liabilities total \$149.4 million, which is twenty-two percent of total assets. Net assets include all the County's assets and liabilities with the difference between the two reported as net assets. The County's net assets of \$543.0 million or 80% of total assets are comprised of \$428.4 million of capital assets net of related debt, \$99.2 million of net assets restricted by constraints imposed from outside of the County, and \$15.4 million of net assets that are available to maintain the County's continuing obligations to citizens and creditors.

Financial Information

The table below shows the change in the net assets from the prior fiscal year 2006.

<u>Balance Sheet (in millions)</u>	<u>2006</u>	<u>2007</u>	<u>Percent Change</u>
Assets - Current	\$ 144.6	\$ 190.1	31%
Assets - Non - Current (Other)	5.7	6.3	11%
Land	48.7	54.2	11%
Buildings and Improvements	76.9	77.2	0%
Equipment	18.6	20.2	9%
Infrastructure	342.4	344.4	1%
Liabilities - Current	36.3	39.6	9%
Liabilities - Non-Current	93.6	109.8	17%
Net Assets - Capital Assets, Net of Related Debt	420.1	428.4	2%
Net Assets - Restricted	68.2	99.2	45%
Net Assets - Unrestricted	18.6	15.4	-17%
Total Net Assets	<u>\$ 506.9</u>	<u>\$ 543.0</u>	7%

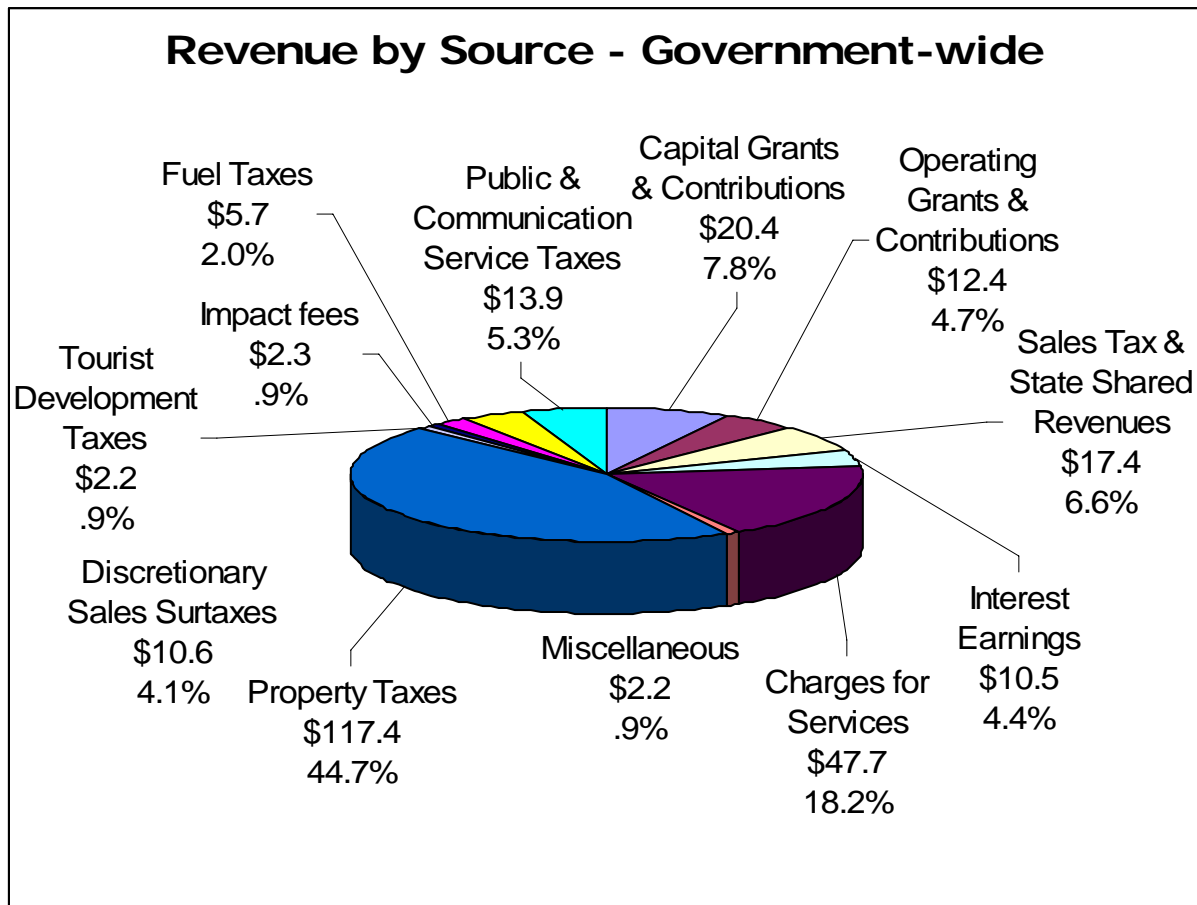
Current and other assets increased by 31% over the prior year primarily due to an increase in the property tax roll resulting in higher ad-valorem revenues, the accumulation of assets from the initial startup of the CHOICES program, an increase in investment income and the accumulation of assets from the assessment of impact fees for parks, transportation and fire services. Capital assets, net of related debt, increased by 2% primarily due to donated infrastructure for new housing developments totaling \$8.3 million that was added to the County's capital asset records.

Current liabilities and long-term liabilities increased from the previous year by 9% and 17% respectively, mainly due to the issuance of new debt, \$21.17 million Public Improvement Revenue Bonds Series 2007A.

An additional portion of the County's net assets (\$99.2 million) represents resources that are subject to external restrictions on how they may be used. The remaining balance of unrestricted net assets (\$15.4 million) may be used to meet the government's ongoing obligations to citizens and creditors.

Restricted net assets increased by \$31 million or 45% from 2006 to 2007. These net assets represent restrictions from specific revenue sources and grants. Main components of the increase are \$20 million net of new bond money restricted for use on specific capital projects and a net increase of \$10.6 million for the CHOICES program.

Unrestricted net assets decreased by \$3.2 million, primarily due to costs of one-time land acquisitions, including new Industrial / Fairgrounds land for \$2 million and land adjacent to the Transfer Station for future expansion at a cost of approximately \$1.5 million.



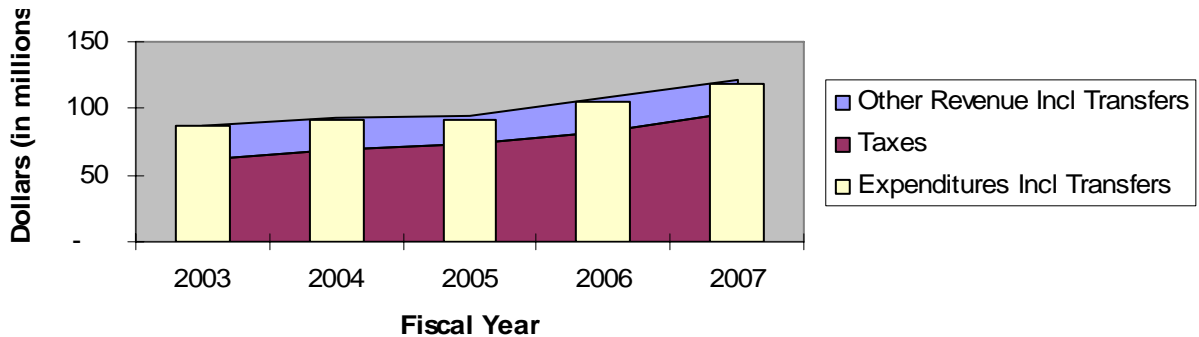
In the graph above, Alachua County's Revenue by Source (revenues excluding transfers) during fiscal year 2007 of \$262.5 million are divided into twelve categories.

Revenues (in millions)	2006	2007	Percent Change
Operating grants & contributions	\$ 13.1	\$ 12.4	-5%
Capital grants & contributions	18.3	20.4	11%
Charges for services	45.7	47.7	4%
Property taxes	99.9	117.4	18%
Tourist Development taxes	2.1	2.2	5%
Impact fees	1.8	2.3	28%
Fuel taxes	5.4	5.4	0%
Discretionary sales surtaxes (CHOICES)	11.6	10.6	-9%
Public & communication service taxes	12.7	13.9	9%
Sales tax & other State shared revenues	18.1	17.4	-4%
Interest earnings	7.5	10.5	40%
Miscellaneous	2.2	2.2	0%
	\$ 238.3	\$ 262.5	10%

Major Funds Revenues & Expenditures

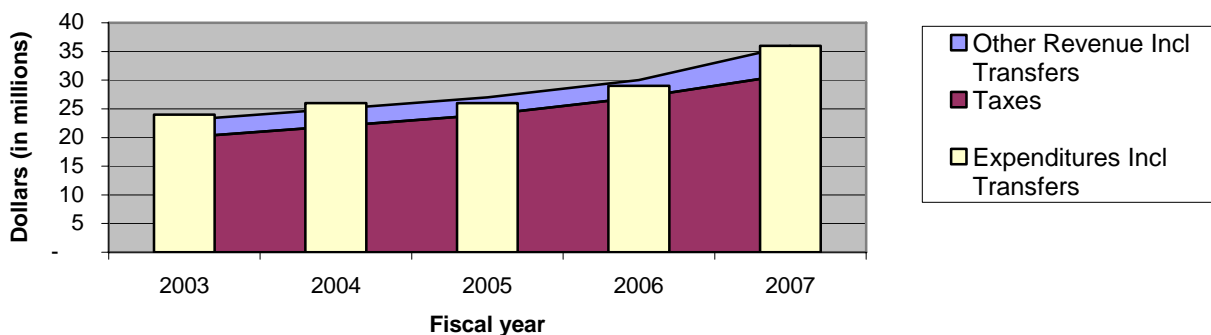
<u>General Fund</u>	2003	2004	2005	2006	2007
Taxes	\$ 61,868,254	\$ 69,200,225	\$ 73,989,149	\$ 83,075,189	\$ 97,215,930
Other Revenue Incl Transfers	24,683,367	23,315,942	20,179,201	25,491,061	24,151,923
Expenditures Incl Transfers	86,770,754	91,536,721	90,965,501	105,220,583	118,676,026
Net change in fund balance	\$ (219,133)	\$ 979,446	\$ 3,202,849	\$ 3,345,667	\$ 2,691,827

General Fund Revenue & Expenditures

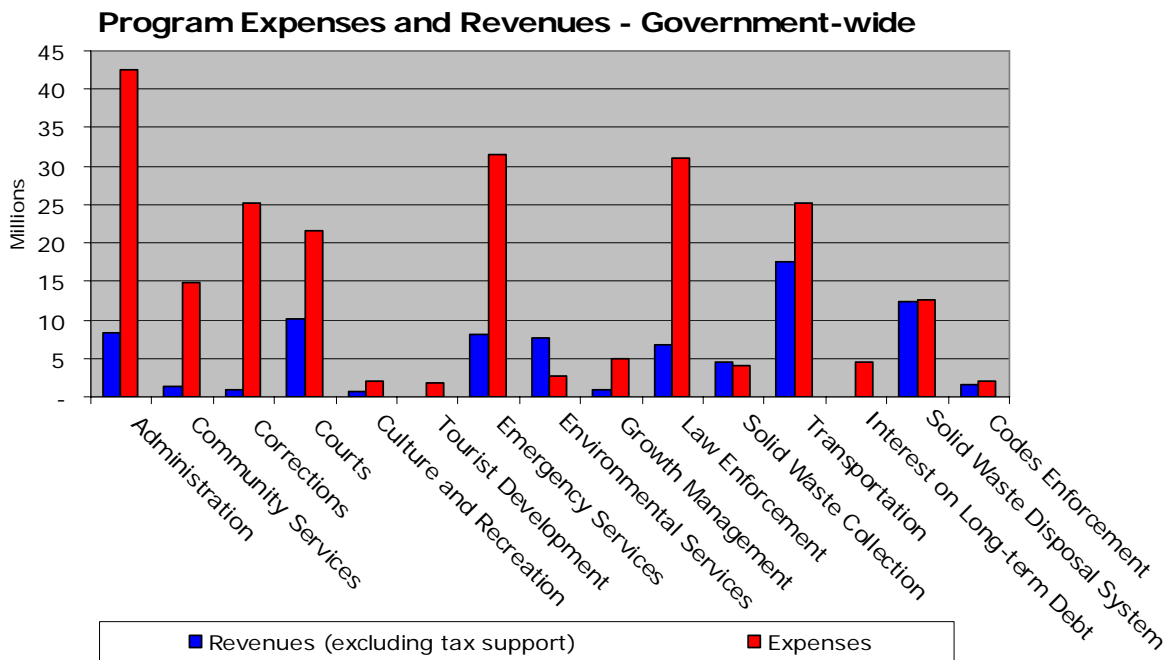


<u>MSTU</u>	2003	2004	2005	2006	2007
Taxes	\$ 20,012,724	\$ 22,477,208	\$ 24,103,869	\$ 26,708,421	\$ 30,930,519
Other Revenue Incl Transfers	3,000,079	3,342,263	2,760,774	3,043,600	5,345,068
Expenditures Incl Transfers	24,349,510	26,131,545	26,148,425	29,454,880	35,952,389
Net change in fund balance	\$ (1,336,707)	\$ (312,074)	\$ 716,218	\$ 297,141	\$ 323,198

MSTU Revenue & Expenditures



Note: In 2003, MSTU tax revenues were split into Unincorporated areas (49%) and Law Enforcement (52%). In 2007, Unincorporated revenues were split into Unincorporated areas (13%), Law Enforcement (51%) and Fire Services (36%).



The above graph provides a detailed comparison of expenditures and revenues by program for fiscal year 2007. The County currently has 15 programs to which revenues and expenditures are allocated. Program revenues covered 36% of the cost of program expenses. Tax revenues (property, sales, gas, utility and other taxes) covered the remaining 64% of the costs of programs.

CHANGES IN NET ASSETS

(in millions)

Program revenues	\$ 80.5
Program expenses	(226.4)
Program expenses in excess of program revenues	(145.9)
General/tax revenue	182.0
Increase in net assets	36.1
Net assets - beginning	506.9
Net assets - ending	\$ 543.0

The County ended the year with a \$36.1 million increase in net assets, with revenues increasing 10.2%, but expenditures increasing only 9.9%.

Programs by Department

	<u>2006</u>	<u>2007</u>
Program - Administration		
County Commission	\$ 479,545	\$ 495,287
County Attorney	851,575	943,915
Non-Departmental	-	131,014
Non-Dept. (OMB-Administered)	5,972,902	7,258,635
Information Services	4,325,770	4,845,100
County Manager	2,136,832	2,350,867
Administrative Services	8,703,884	9,302,072
Clerk (Finance & Accounting; Official Records)	3,343,105	4,553,103
Supervisor of Elections	1,712,276	1,453,922
Tax Collector	4,606,219	5,909,885
Property Appraiser	4,495,556	5,060,538
Capital Projects	270,730	237,063
Total Administration	<u>36,898,394</u>	<u>42,541,401</u>
Program - Community Services		
Community Support Services	11,717,535	12,456,067
Public Works	2,004,348	2,290,834
Capital Projects	242,215	208,425
Total Community Services	<u>13,964,098</u>	<u>14,955,326</u>
Program - Corrections	<u>23,619,110</u>	<u>25,108,328</u>
Program - Courts		
Court Services	7,294,731	8,640,382
Clerk of Circuit Court	7,789,655	7,257,998
Sheriff-Bailiffs	2,558,833	2,693,786
Court Administration	1,117,242	1,351,045
State Attorney	319,390	327,091
Public Defender	195,302	197,521
Guardian Ad Litem	102,859	95,671
Capital Projects	1,120,112	1,095,537
Total Courts	<u>20,498,124</u>	<u>21,656,031</u>
Program - Culture and Recreation		
Public Works	1,582,312	1,919,009
Capital Projects	168,755	199,871
Total Culture and Recreation	<u>1,751,067</u>	<u>2,118,880</u>
Program - Tourist Development	<u>1,629,274</u>	<u>1,832,697</u>

Programs by Department, continued

	<u>2006</u>	<u>2007</u>
Program - Emergency Services		
Fire/Rescue Services	\$ 22,139,884	\$ 23,929,314
Sheriff - Combined Communication Center	6,911,106	7,476,716
Capital Projects	86,075	85,212
Total Emergency Services	<u>29,137,065</u>	<u>31,491,242</u>
Program - Environmental Services		
Environmental Protection	2,531,150	2,621,800
Water Utility	23,489	18,808
Total Environmental Services	<u>2,292,391</u>	<u>2,640,608</u>
Program - Growth Management		
Growth Management	3,077,689	4,490,880
Public Works - Development Review	471,515	453,563
Capital Projects	24,079	24,070
Total Growth Management	<u>3,573,283</u>	<u>4,968,513</u>
Program - Law Enforcement		
Sheriff	27,954,549	30,762,741
Capital Projects	218,113	214,176
Total Law Enforcement	<u>28,172,662</u>	<u>30,976,917</u>
Program - Transportation		
Public Works	23,298,124	25,017,361
Capital Projects	79,807	78,994
Total Transportation	<u>23,377,931</u>	<u>25,096,355</u>
Interest on Long-term Debt	<u>3,134,907</u>	<u>4,524,190</u>
Program - Solid Waste Disposal System		
Solid Waste Collections	3,601,815	3,950,855
Solid Waste Disposal System	8,710,210	9,261,283
Collection Centers	1,818,601	1,844,753
Waste Management Assessment	1,576,769	1,534,370
Total Solid Waste Disposal System	<u>15,707,395</u>	<u>16,591,261</u>
Program - Codes Enforcement	<u>1,853,940</u>	<u>1,952,130</u>
TOTAL GOVERNMENT-WIDE EXPENSES	<u>\$ 205,871,890</u>	<u>\$ 226,453,879</u>

Elected Officials

Board of County Commissioners

264-6900; Fax: 338-7363

12 Southeast First Street, Second Floor

TDD/TTY: 491-4430

Board Members: Rodney J. Long (Chairman), Mike Byerly (Vice Chairman), Cynthia Moore Chestnut, Paula M. DeLaney, Lee Pinkoson

The Board of County Commissioners serves as the legislative and policy making body for Alachua County. It approves the budget, sets millage rates, and adopts ordinances and resolutions necessary to carry out the operations of all County departments and programs.

Departments and Services

County Manager

374-5204; Fax: 338-7363

TDD/TTY: 491-4430

12 Southeast First Street, Second Floor

County Manager: Randall H. Reid

The County Manager is responsible for managing all of the functions of the County, administers and carries out the directives and policies of the Board of County Commissioners, and coordinates the reporting of these actions to the Board and our citizens. The Manager also serves as a liaison between the Board of County Commissioners and the citizens of Alachua County. In addition, the County Manager's office includes the Office of Management and Budget, the Communications Office, Economic Development, and Tourist Development.

COUNTY DEPARTMENTS (alphabetically)

Administrative Services

374-5219; Fax: 374-5233

12 Southeast First Street, Third Floor

TDD/TTY 491-4431

Director: Betty M. Baker

Administrative Services provides support services to County Departments in the areas of Equal Opportunity, Facilities Management, Human Resources, Organizational Development, Purchasing, and Risk Management.

Codes Enforcement

374-5244; Fax: 491-4510

120 South Main Street

TDD/TTY: 491-4429

Director: Rick Wolf

Codes Enforcement issues building permits and provides information about building codes, zoning and other development regulations, and processes violations of the regulations through the Codes Enforcement Board. This office administers the trades licensing program for contractors, electricians, and plumbers, as well as Impact fees for parks, transportation and fire services.

Departments and Services, continued

Community Support Services

264-6700; Fax: 955-2475

218 Southeast 24th Street

TDD/TTY: 264-6703

Director: Elmira Warren

Community Support Services initiates and facilitates services to improve the quality of life for individuals and the community by providing a Poverty Reduction Program, Crisis Center Services, Partners for a Productive Community Program, Rape/Crime Victim Advocate Program, Senior Services, CHOICES and Veterans Services, as well as acting as liaison with Cooperative Extension and the Public Health Department. This department also administers the County's contributions to social service organizations.

County Attorney

374-5218; Fax: 374-5216

12 Southeast First Street, Second Floor

County Attorney: David Wagner

The County Attorney provides legal representation and advice to the Board of County Commissioners, Constitutional Officers, County staff, Library District, Codes Enforcement Board and other legal services as necessary.

Court Services Department

338-7390; Fax: 338-3299

14 Northeast First Street

TDD/TTY: 491-4409

Director: Cyndi Morton

The Court Services Department provides a variety of programs that divert low risk offenders to community programs to ensure that expensive jail beds are reserved for high risk offenders. These community programs also require that offenders pay back the community through the payment of fees or by performing community service. These programs include Metamorphosis, Drug Court, and Work Release.

Environmental Protection Department

264-6800; Fax: 264-6852

201 Southeast 2nd Avenue, Suite 201

TDD/TTY: 264-6850

Director: Chris Bird

This department is responsible for County environmental protection activities including surface and groundwater quality monitoring, environmental assessment of proposed land use and redevelopment projects, Toxic Roundup (household hazardous waste collections), hazardous materials storage facility inspections, spill response, enforcement of County environmental codes, and investigations of citizen complaints involving possible environmental violations. The Alachua County Forever Legacy Lands purchases and maintenance is included in this department's responsibilities.

Departments and Services, continued

Fire/Rescue Services Department

384-3101; Fax: 384-3159

913 Southeast 5th Street

TDD/TTY: 334-0105

Director/Chief Officer: Will Gray May, Jr.

Fire Rescue provides timely 24-hour emergency medical services throughout the County and fire suppression and inspection services in the unincorporated and selected municipal areas. Provides emergency management and enhanced 911 emergency reporting services Countywide. Volunteers can also assist in the delivery of emergency medical, fire suppression, training, public education, and specialty teams services through the Reserve Program and teenagers can participate in the Explorer Program.

Information and Telecommunication Services

338-7300; Fax: 338-7365

26 Northeast First Street

Director: Kevin Smith

This department maintains data communications, network infrastructure, the County website, hardware, and software needs for the Alachua County Board of County Commissioners, its departments, the Constitutional Officers, the 8th Judicial Circuit Court, the Public Defender, and local State Attorney's Office.

Planning and Development

374-5249; Fax: 338-3224

TDD/TTY: 381-0110

10 Southwest 2nd Avenue, Third Floor

Director: Richard A. Drummond

Planning and Development prepares, updates, and implements the County's Comprehensive Plan and assists the public and makes recommendations to the Board of County Commissioners on zonings, land development regulations, Comprehensive Plan amendments, and Developments of Regional Impact. This department also implements the County's Concurrency Management System, and runs the State Housing Initiative Partnership (SHIP) Program.

Public Works

374-5245; Fax: 337-6243

U.S. Highway 441, Hague

TDD/TTY: 386-462-3068

Director: Richard L. Hedrick

Public Works maintains roads and bridges, manages the collection and safe disposal of solid waste, provides animal services, operates the County's transfer station, educates the community on waste alternatives, develops and maintains parks, obtains and maintains County vehicles and heavy equipment, identifies transportation improvement needs, designs transportation and storm water management projects, inspects road construction projects, reviews development plans and oversees construction contracts and permits, issues driveway, utility, and flood prone area permits, and acquires real property and rights of way for the County. The solid waste division manages the curbside collections in the urbanized portion of unincorporated Alachua County, and the Rural Collection Centers, which serve the more rural portions of the County. The curbside collection program includes once a week collection of solid waste, recyclables, and yard trash. The Rural Collection Centers provide for the drop off of household garbage, recycling, limited home construction and demolition debris, yard waste, and non-toxic household hazardous waste.

Elected Constitutional Officers

Clerk of the Circuit and County Court Clerk to the Board of County Commissioners

374-3636; Fax: 338-3201

201 East University Avenue

TDD/TTY: 491-4497

Courthouse TDD/TTY: 374-3639

Clerk: J. K. "Buddy" Irby

The Clerk serves as Clerk to the County Court and the Circuit Court. In this capacity, the Clerk is the custodian of all court records, evidence, and the court's seal. The Clerk also issues process, enters judgments and orders, gives certified copies from record, collects court ordered child support, court fines and fees, and makes disbursements pursuant to law. The Clerk also acts as the County Recorder, issues marriage licenses and home solicitation permits, and collects and distributes documentary stamps and intangible taxes for the Department of Revenue. The Clerk's Finance & Accounting department provides a full range of financial services to the County and Library District. The Clerk prepares financial statements and other mandated financial reporting, provides general accounting, accounts payable, payroll, accounts receivable, grant and enterprise accounting, treasury and investment functions, debt and property management, and internal auditing. The Clerk also records the minutes of Board of County Commissioners and Library District Board of Governors meetings.

Property Appraiser

374-5230; Fax: 374-5278

12 Southeast First Street

Property Appraiser: Ed Crapo

The Property Appraiser appraises all property within the borders of Alachua County, administers Ad Valorem exemptions, produces and administers the tax rolls for the Board of County Commissioners, the Municipal Services Taxing Unit, the School District, and various municipalities and other entities in Alachua County.

Sheriff

367-4000; Fax: 491-4537

2621 Southeast Hawthorne Road

Sheriff: Sadie Darnell

The Sheriff is responsible for the protection of lives and property of the citizens of Alachua County. She enforces laws mandated by Florida Statute, and performs services including the operation of Cooperative Dispatch Center, which receives information, complaints, and requests for police, fire and EMS assistance by telephone, and assigns field personnel via radio to the scene of incidents. She also oversees and operates the Alachua County jail facility.

Elected Constitutional Officers, continued

Supervisor of Elections

374-5252; Fax: 374-5264

12 Southeast First Street

TDD/TTY: 491-4432

Supervisor of Elections: Pam Carpenter

The Supervisor of Elections is responsible for all matters pertaining to voter registration within Alachua County. She supervises County, State, and National elections, maintains the County's voting equipment, files all candidate contributions and expenditure reports, oversees candidate qualifying, financial disclosures filed by selected government officials and employees, and assists County municipalities with their elections.

Tax Collector

491-4436; Fax: 374-5281

12 Southeast First Street

Tax Collector: Von Fraser

The Tax Collector collects and distributes all current and delinquent Ad Valorem Taxes and Non-Ad Valorem Assessments levied by the Board of County Commissioners, School Board, Municipalities, Library District, and Refuse and Water Districts. He acts as an agent for the Dept. of Highway Safety and Motor Vehicles, Game and Fresh Water Fish Comm. and the Dept. of Environmental Regulation in the issuing of licenses and the collection of fees. Tourist development taxes and occupational license fees are also collected.

Miscellaneous Information

Fire/Rescue		
Number of Fire/Rescue Stations		9
Number of Ambulances & Rescue Units		19
Number of Fire trucks & related vehicles		19
Environmental Services		
Acres of Conservation Land		11,416
(Some land is owned in partnership with other entities or held as conservation easements)		
Culture & Recreation		
Park acreage		1,333
County Parks		26
Picnic shelters/gazebos		42
Soccer/football fields		18
Baseball/softball fields		5
Boat docks/boat ramps		34
Playgrounds		11
Law Enforcement		
Vehicles – all uses		458
Solid Waste/Waste Collection		
Collection Centers		6

County Statistics

Total County Population		247,561
Alachua	7,854	
Archer	1,229	
Gainesville	122,671	
Hawthorne	1,401	
High Springs	4,739	
LaCrosse	195	
Micanopy	637	
Newberry	4,787	
Waldo	831	
Unincorporated	103,217	
Median Age		29.3
College & University enrollment		66,557
Public school enrollment		27,622
Unemployment Rate		2.9%
Number of building permits issued for 2007		4,225

Cover – Cellon Oak

The Cellon Live Oak was named for its former owner, Ralph W. Cellon, and now sits in Cellon Oak Park, an Alachua County park located three miles south of LaCrosse, Florida

Florida Co-Champion Live Oak
(*Quercus virginiana* var. *virginiana*)

Circumference = 360 inches (30 feet)

Height = 85 feet

Average crown spread = 160 feet