



# Alachua County Environmental Protection Department

---

Chris Bird, *Director*

December 16, 2010

Memorandum

**TO:** Board of County Commissioners

**VIA:** Chris Bird, ACEPD Director

**FROM:** John Mousa

**SUBJECT:** Springstead and Hogtown Creek Pine Tar Removal Plan

This memo is to advise the Board of County Commissioners that the Cabot Corporation will begin a voluntary clean-up and removal of deposits of pine tar from segments of Springstead and Hogtown creeks in the City of Gainesville beginning in January 2011. The pine tar deposits are historical residual contamination from a discharge from the former Cabot site which occurred 44 years ago. The clean-up will focus on 17 isolated areas of buried pine tar in the creeks which were previously identified by the Alachua County Environmental Protection Department (ACEPD). The proposed locations for tar removal are identified in attached **Fact Sheet**. This is an interim removal action to address areas of the creeks containing significant tarry deposits and addressing citizen concerns regarding potential contact with the deposits. It is not the intent of this interim action plan to address all site related contamination in the creeks nor is this action the final Superfund remedy.

Cabot Corporation has developed a pine tar removal workplan which has been reviewed and tentatively approved by the US Environmental Protection Agency (USEPA), Florida Department of Environmental Protection (FDEP), ACEPD, and the City of Gainesville. A few minor technical details remain to be resolved prior to final approval of the plan and the initiation of removal activities in January. The work is expected to take one to two days at each clean-up area with a total project duration of approximately 7 to 8 weeks weather permitting. Cabot's contractor, Weston Solutions, will be carrying out the work. Cabot and Weston Solutions will be seeking property access in the next few weeks from property owners adjacent to the creek segments containing tar to be removed and finalizing staging areas. They will also be notifying the public about the proposed work, including providing a fact sheet. (See Fact Sheet attached). The Fact Sheet will be distributed to the property owners nearby the creek work areas and to residents who have been identified by the various mailing lists (such as lists maintained by the EPA, City of Gainesville and Alachua County). Once finalized, the work plan and fact sheet and other project details will be made available on the City of Gainesville and the Alachua County websites. A summary of **Frequently Asked Questions** and answers is attached.

General questions about the proposed work can be directed to Dr. John Mousa at ACEPD (264-6805) ([jjm@alachuacounty.us](mailto:jjm@alachuacounty.us)) or Mr. Stewart Pearson, P.E. at the City of Gainesville (334-5072) ([pearsonse@ci.gainesville.fl.us](mailto:pearsonse@ci.gainesville.fl.us)). Detailed questions about the proposed workplan can also be directed to:

Mark Taylor, Project Manager  
Weston Solutions  
(904)261-3085  
[Mark.Taylor@WestonSolutions.com](mailto:Mark.Taylor@WestonSolutions.com)

Wayne M. Reiber, Envir. Assessment & Remediation Manager  
Cabot Corporation  
(617)342-6023  
[wayne\\_reiber@cabot-corp.com](mailto:wayne_reiber@cabot-corp.com)

CC: Randall Reid, County Manager  
Richard Drummond, Asst. County Manager  
David Wagner, County Attorney

Attachments: Frequently Asked Questions- Cabot Tar Removal in Springstead and Hogtown Creeks  
Cabot Fact Sheet – Springstead and Hogtown Creeks Pine Tar Removal Plan

## FREQUENTLY ASKED QUESTIONS

### CABOT TAR REMOVAL IN SPRINGSTEAD AND HOGTOWN CREEKS

- 1. Is this tar removal by Cabot the start of the Superfund remedy for Koppers Superfund Site as far as removing contamination from the creek?**

No, this tar removal is an interim voluntary action by Cabot to address an ongoing nuisance issue and public concern about tar residues in the creek system and is not a part of the Superfund remedy for the Koppers site.

- 2. Why is the pine tar removal being conducted in January and February?**

The removal is planned for January and February because that's the time of year when rainfall, baseflow and stormwater flows in the creeks are low and access to the creeks is possible.

- 3. Will all the pine tar in the creeks be removed in this plan?**

ACEPD has identified several locations in the creeks that contain some residual pine tar. This removal action is focused only on 17 locations that appear to have the greatest extent of tar residues and that can be practically removed. There is tar residue at certain locations in the creeks that will not be removed due to the extreme difficulty of creek access due to steep or unstable creek banks, lack of appropriate access for removal equipment.

- 4. Will the creek banks be restored when the work is completed? Will properties near the creek that are used for creek access by Cabot be restored?**

Yes, the tar removal workplan specifies that the creek work areas will be restored. Cabot will also restore any impacts to private property as specified in the access agreements with property owners.

- 5. What type of equipment will be used to remove the pine tar from the creek?**

Small bobcat type excavators will be used to remove the sediment from the creek. Further details of the excavation are contained in the workplan.

- 6. Does Cabot need to obtain property access permission from property owners adjacent to the areas where tar is to be removed? What happens if property access is not obtained?**

Yes, Cabot and its representatives will be seeking property access agreements for properties that are adjacent to the creek work areas and that will be used for creek access. Commercial properties will be targeted for creek access as much as possible. If property access is not obtained from certain property owners, certain tar deposits may not be removed. If sufficient property access is not received in a timely manner, the tar removal project may be postponed until the next dry season in the Fall of 2011.

- 7. Will there be any dust or odors generated from the work in the creek? What type of controls or monitoring will be performed by Cabot during the work effort?**

It is not expected that dust will be an issue during the excavation of the wet sediments. Odors from the pine tar may be noticeable at the work areas. Odor control procedures will be taken at the work and staging areas to control odors such as covering of exposed tarry sediments. Cabot also plans on

performing air monitoring around the work areas to assure a safe work environment for the workers and the surrounding property and residents.

8. **Is pine tar contamination still being discharged from the former Cabot site or is this old contamination?**

The pine tar contamination is a result of an old historical discharge from the former Cabot Site near Main Street over 44 years ago. There is not a continuing source of pine tar discharge from the former Cabot site.

9. **Why do the proposed tar removal areas not include some segments of Springstead and Hogtown Creeks?**

Based on the extensive creek survey performed by ACEPD, there were some segments of Springstead and Hogtown Creek which did not show any indications of tarry materials. In particular the section of Springstead Creek downstream of the Cabot Koppers Superfund Site and east of NW 6<sup>th</sup> Street did not show any surficial or buried tar contamination.

10. **Will removing the tar deposits stir up contaminants from the creeks?**

No, each segment of the creek where tar deposits are removed will be isolated from the stream flow using temporary dams until the tar deposit is removed. Monitoring for turbidity will be performed to maintain compliance with state regulations.

11. **How will the excavated areas of the streambeds be filled?**

The excavated areas will be filled or allowed to naturally refill with sand from the surrounding in-stream areas. Both streams have adequate sand and adding fill material to the creeks is undesirable.

12. **How will the removed pine tar contaminated sediments be handled?**

Excavated tarry sediments will be collected in specially designed roll-off containers which will allow for dewatering of the sediments. These containers will be transported to a central staging area where the soils will be stockpiled and allowed to dry before transportation to a licensed thermal treatment facility located in Mulberry, Florida.

13. **Will this interim removal action address the other contamination that may be in the Creek that is related to the Koppers Superfund site? If not when will this Superfund related contamination be addressed.**

This tar removal action is not intended to address the other contaminants that may be present in the creek sediment that are associated with the Cabot-Koppers Superfund Site. These contaminants will be addressed in by USEPA in the final Superfund remedy for the Cabot Koppers Superfund site.

14. **Are the workplans for this effort available for the public?**

Yes, the final Tar Removal workplans and map of the work locations will be available on the Alachua County Environmental Protection website (<http://www.alachuacounty.us/depts/epd>) and the City of Gainesville website ([www.cityofgainesville.org](http://www.cityofgainesville.org))

## **Springstead and Hogtown Creeks Pine Tar Removal Plan**

### **What:**

Cabot Corp will begin the clean up of the Springstead and Hogtown Creeks, to remove isolated deposits of pine tar in the creeks. Cabot's contractor, Weston Solutions, will be carrying out this work.

### **Why:**

Recently, the Alachua County Environmental Protection Department (ACEPD) located and identified specific locations along the creek where pine tar is present. Cabot believes that the best course of action is to remove them and submitted a plan to the United States Environmental Protection Agency (USEPA) and Florida Department of Environmental Protection (FDEP), ACEPD, and the City of Gainesville to do just that. This work is an interim removal action to address areas of the creeks containing significant tarry deposits and address citizens concern regarding potential contact with those deposits. It is not intended to address all site related contamination in the creek nor is it the final Superfund remedy.

### **Where:**

The clean up is focused on 17 isolated areas in the creeks which were identified in a comprehensive study done by ACEPD.

### **When:**

The plan has been reviewed, commented on and approved by the USEPA, FDEP, ACEPD and the City of Gainesville. It is expected that the work will be done in January and February 2011, a time when rainfall in Gainesville is usually low. The work is expected to take up to one to two days at each clean up area. Appropriate property access will be sought to undertake the work.

### **Clean Up Plan Elements:**

- Remove pine tar deposits from all 17 areas in the creeks.
- Removal will be conducted using small-sized back hoes and similar equipment.
- Removed material will be transported to a central location for appropriate disposal off site.
- Odor control measures will be implemented since pine tars have an odor. Some odors may be noticeable near the work area. Air monitoring will be conducted.
- Properties and work areas affected by this work will be restored.

## Background

- Cabot operated a pine tar plant that distilled pine oil and tar from pine trees into a variety of products. Cabot's plant operations ceased in 1966 and the property was sold to a local developer.
- After Cabot sold the facility, the property was redeveloped, during which time some of the contents of the pine processing lagoons were bulldozed and released.
- Some of the released pine tar entered Springstead and Hogtown Creeks. Accordingly, the Florida Department of Environmental Protection ordered the developer to clean up the release.
- In the 1990s, Cabot installed and continues to maintain a multi-million dollar, 2000-foot long groundwater interceptor trench along North Main Street to address any pine tar related impacts to the groundwater. Recent studies confirm that this remedial system is working effectively.
- Federal, state, and local environmental agencies, among others have previously examined potential impacts to the creek. Last year and earlier this year the ACEPD conducted comprehensive investigations and identified residual pine tar in 17 localized areas, most are 18–24 inches below the creek bed.
- These locations are the focus of Cabot's creek clean up efforts.

---

**For over 25 years, Cabot has proactively implemented remedial actions at its portion of the Superfund Site and has worked cooperatively with regulatory authorities to ensure that these actions remain protective of human health and the environment.**

---

If you have questions or need additional information, please contact:

Mark Taylor, Project Manager  
Weston Solutions  
Tel: 904-261-3085  
Email: [Mark.Taylor@WestonSolutions.com](mailto:Mark.Taylor@WestonSolutions.com)

Wayne M. Reiber,  
Manager, Environmental Assessment &  
Remediation  
Cabot Corporation  
Tel: 617-342-6023  
Email: [wayne\\_reiber@cabot-corp.com](mailto:wayne_reiber@cabot-corp.com)

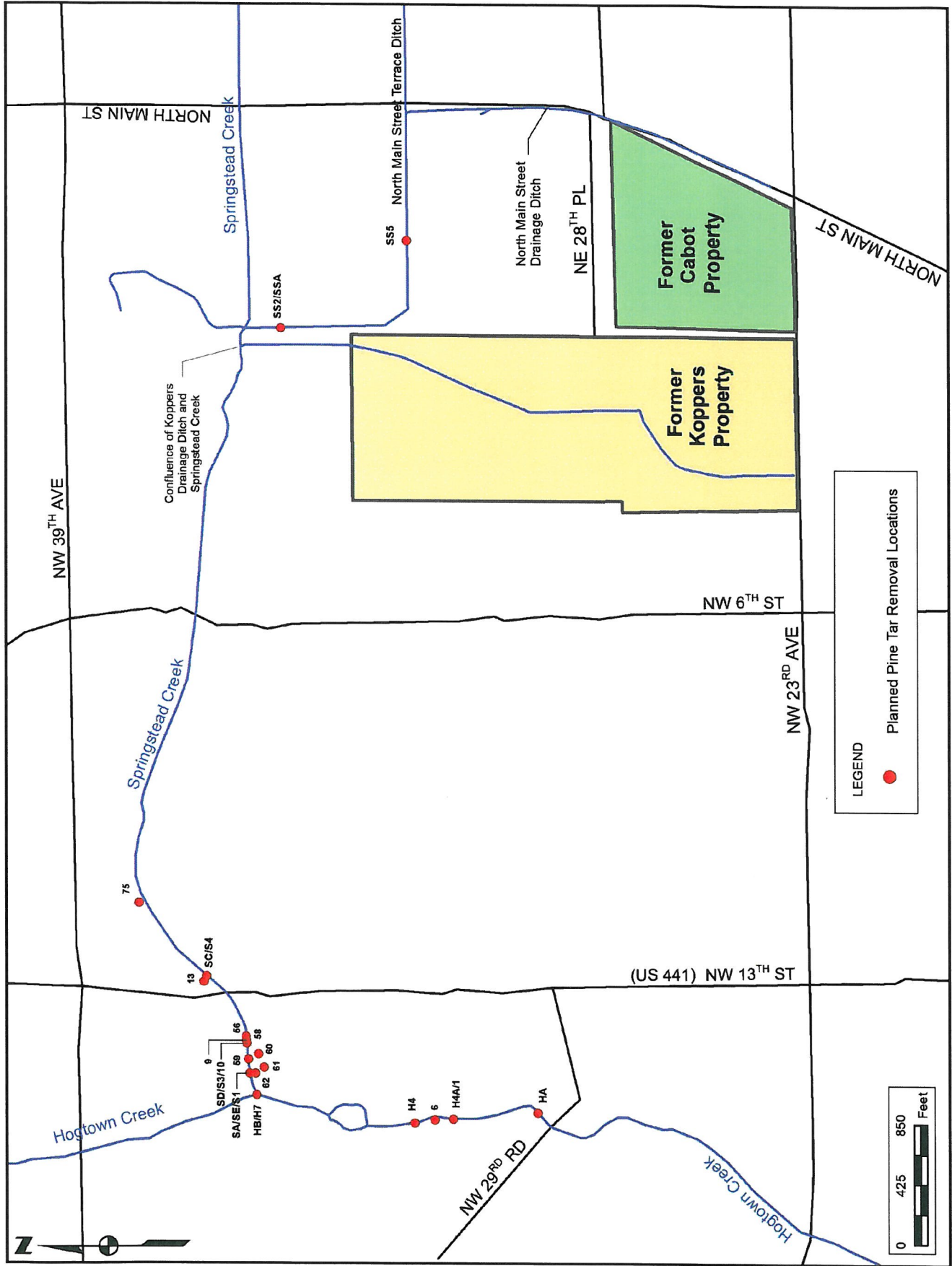
---

You can also contact:

Scott Miller  
Remedial Project Manager, United States Environmental Protection Agency  
Tel: (404) 562-9120  
E-mail: [Miller.Scott@epamail.epa.gov](mailto:Miller.Scott@epamail.epa.gov)

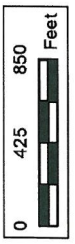
John Mousa  
Pollution Prevention Manager, Alachua County Environmental Protection Department  
Tel: (352) 264-6805  
E-mail: [jjm@alachuacounty.us](mailto:jjm@alachuacounty.us)

Anthony Dennis  
Environmental Health Director, Alachua County Health Department  
Tel: (352) 334-7931  
E-mail: [Anthony\\_Dennis@doh.state.fl.us](mailto:Anthony_Dennis@doh.state.fl.us)



LEGEND

● Planned Pine Tar Removal Locations



NW 39<sup>TH</sup> AVE

NW 6<sup>TH</sup> ST

NW 23<sup>RD</sup> AVE

(US 441) NW 13<sup>TH</sup> ST

NW 29<sup>RD</sup> RD

NORTH MAIN ST

NORTH MAIN ST

Springstead Creek

Springstead Creek

Hogtown Creek

Hogtown Creek

Confluence of Koppers Drainage Ditch and Springstead Creek

North Main Street Drainage Ditch

Former Cabot Property

Former Koppers Property

NE 28<sup>TH</sup> PL

North Main Street Terrace Ditch

SS5

SS2/SSA

13

9

66

58

60

61

SA/SE/1

HBIH7

62

63

H4

6

H4A/1

HA

